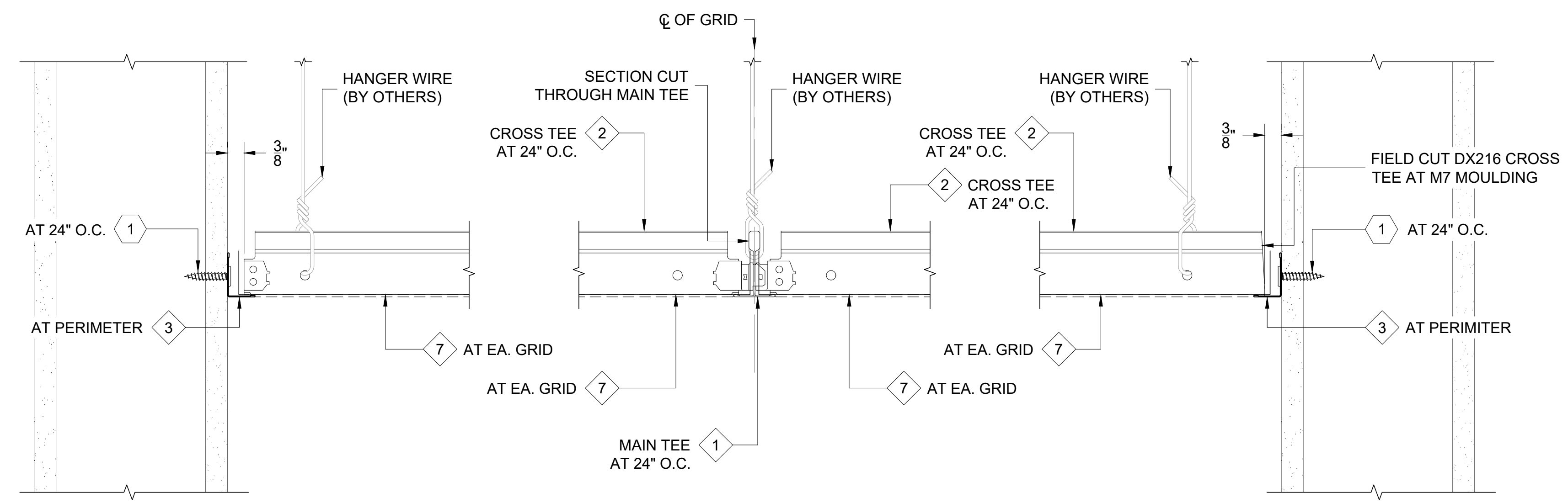
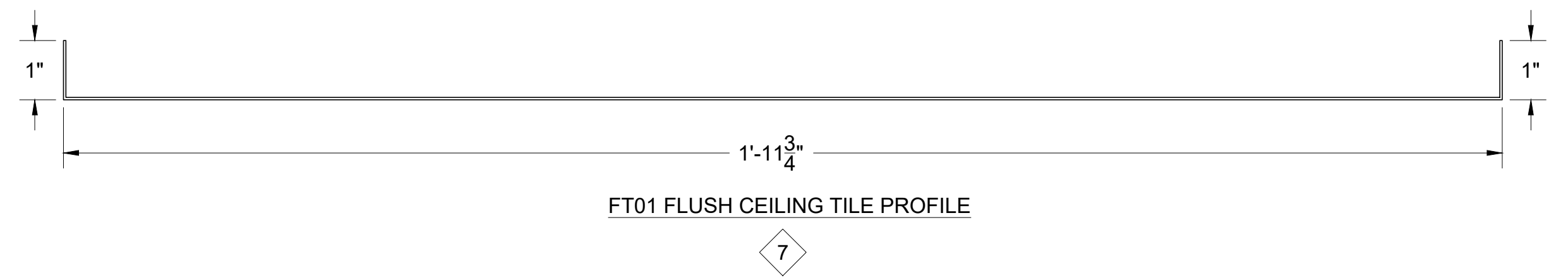
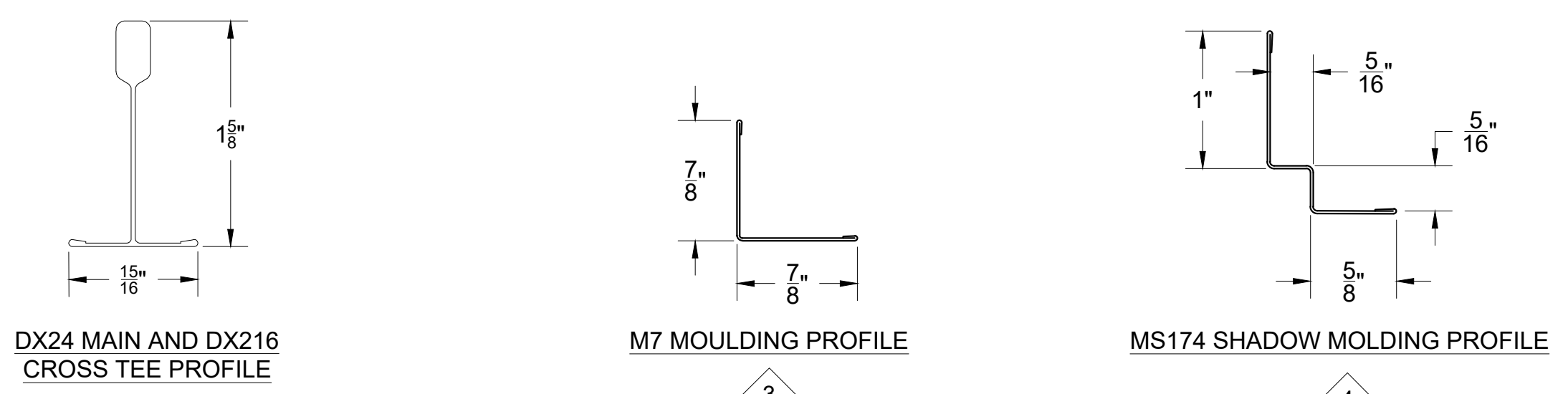


NOTES:  
 1. PREFERRED INSTALLATION: PROFILE AT EDGE OF PANEL TO BE SHOWN AT REVEAL MOLDING. FIELD-CUT AND BEND EDGE TO MATCH IF NECESSARY.  
 2. OPTIONAL INSTALLATION: SQUARE CUT AND ENCAPSULATE EDGE AT PERIMETER.  
 3. TYPICAL PANEL MODULE NOMINAL COVERAGE TO BE 24"x 24" SQUARE.  
 4. ALL FASTENERS TO PENETRATE A MINIMUM OF 3/4" THROUGH SUBSTRATE AND FRAMING.

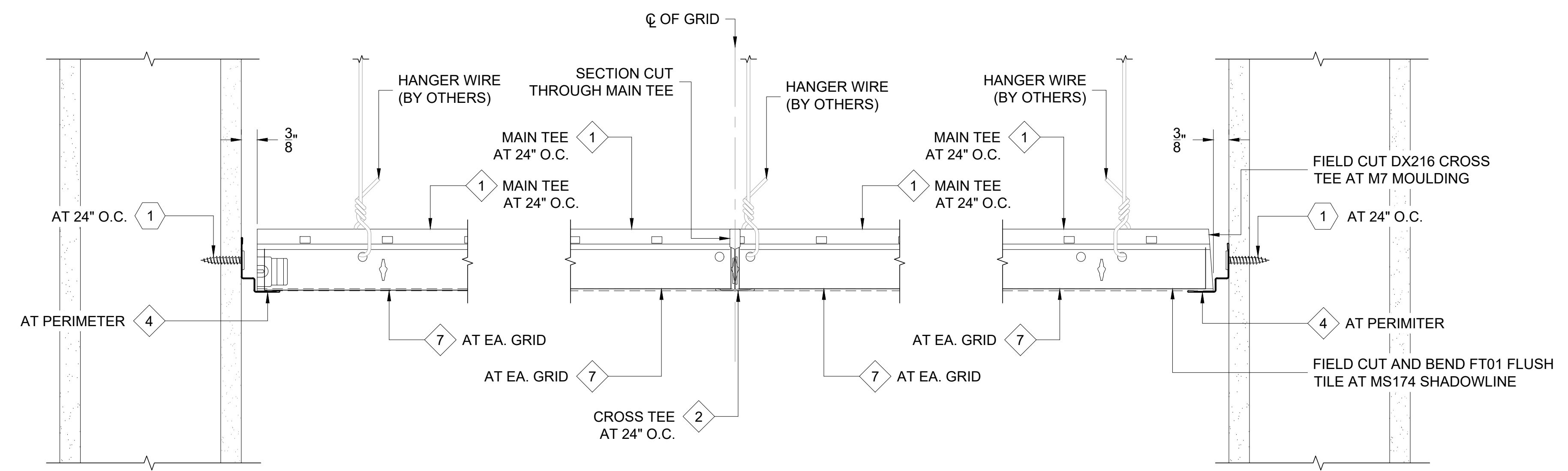
THIS DETAIL IS GENERAL IN NATURE AND WILL BE MODIFIED TO MEET JOB SPECIFIC CONDITIONS



1 FULL FT01 FLUSH CEILING TILE AT PERIMETER WITH M7 MOULDING  
 D1 REF. ARCH. DET.

2 FT01 FLUSH CEILING TILE AND GRID SECTION CUT THROUGH DX24 MAIN TEE  
 D1 REF. ARCH. DET.

3 FIELD CUT FT01 FLUSH CEILING TILE AND DX216 CROSS TEE AT PERIMETER WITH M7 MOULDING  
 D1 REF. ARCH. DET.



4 FULL FT01 FLUSH CEILING TILE AT PERIMETER WITH MS174 SHADOWLINE  
 D1 REF. ARCH. DET.

5 FT01 FLUSH CEILING TILE AND GRID SECTION CUT THROUGH DX216 CROSS TEE  
 D1 REF. ARCH. DET.

6 FIELD CUT FT01 FLUSH CEILING TILE AND DX216 CROSS TEE AT PERIMETER WITH MS174 SHADOWLINE  
 D1 REF. ARCH. DET.

FASTENER DESIGNATIONS

MARK	DESCRIPTION	IMAGE
1	FASTENER VARIES BASED ON CONDITION AND SUBSTRATE	
2		
3		

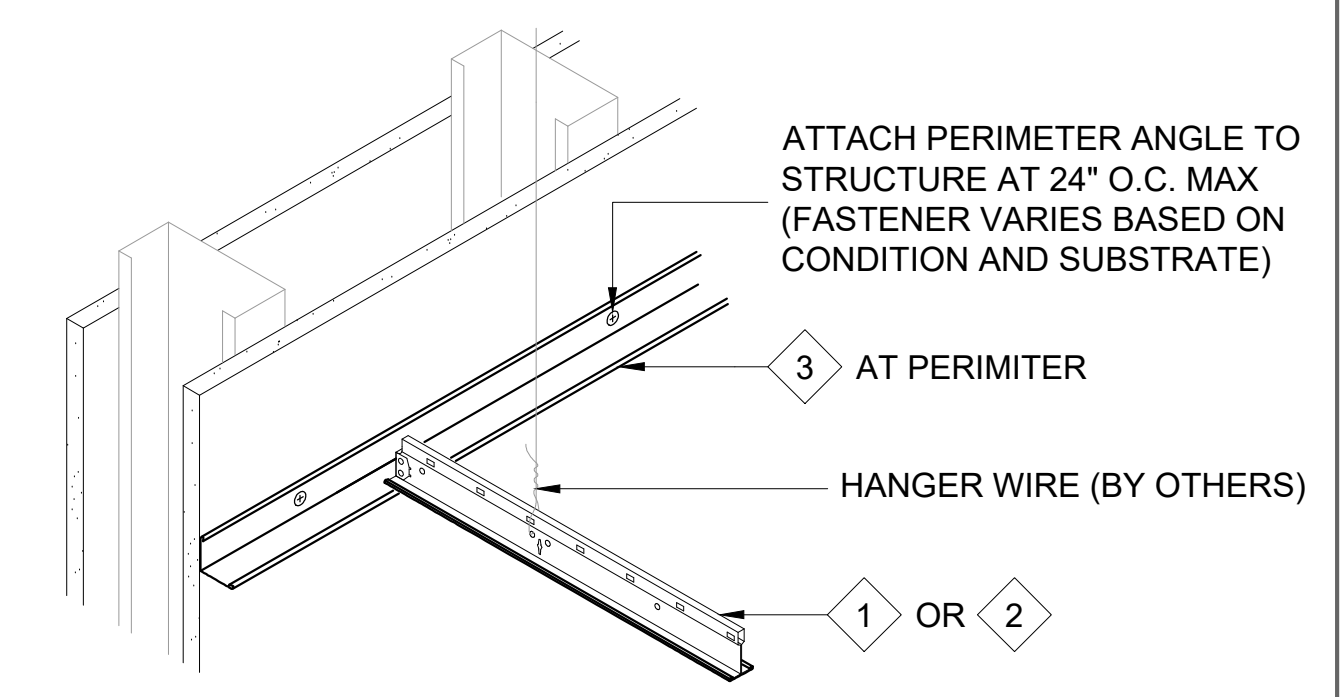
\* (1000 HRS OF CORROSION RESISTANT COATING IN ACCORDANCE WITH ASTM B117)

MATERIAL DESIGNATIONS

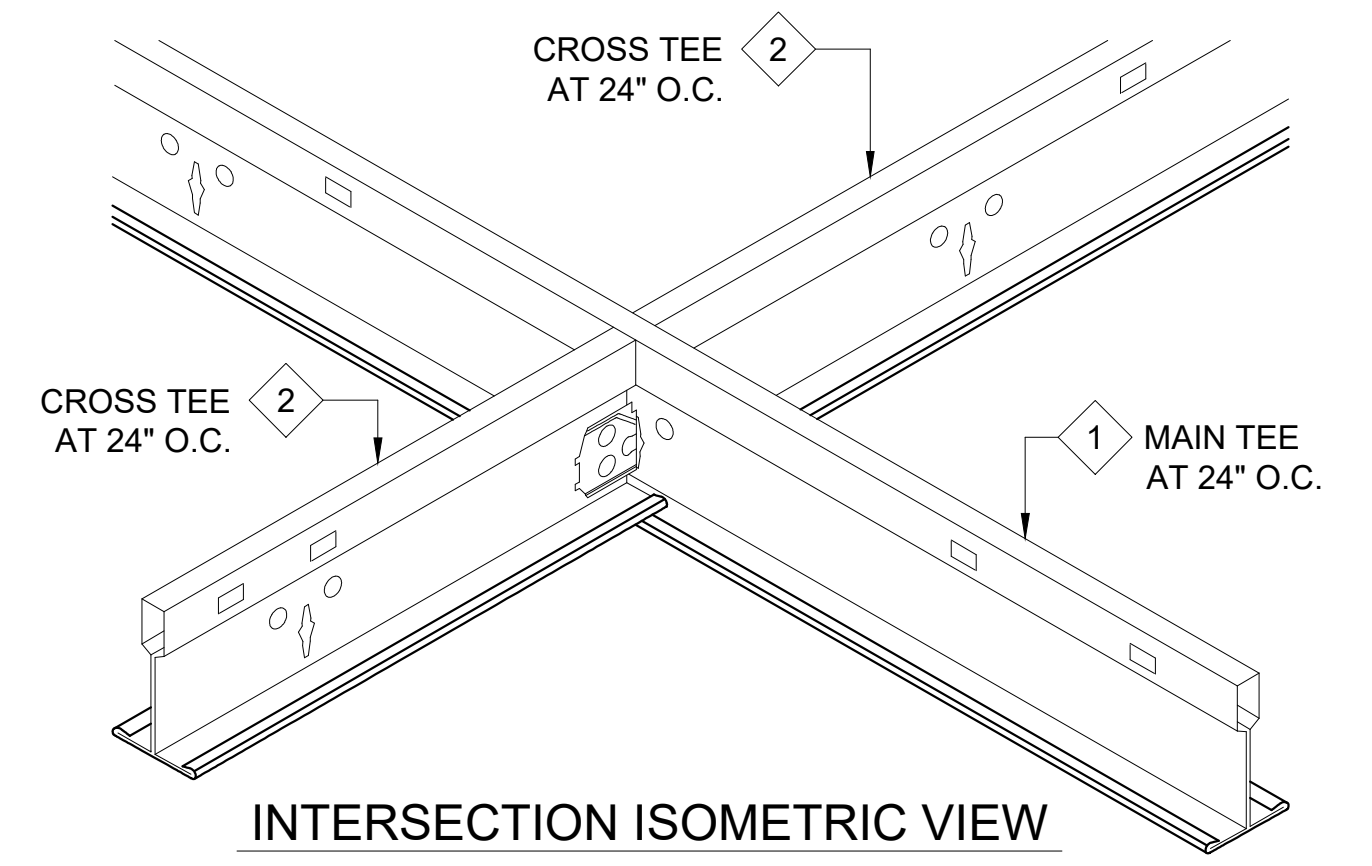
MARK	DESCRIPTION
1	USG DONN BRAND™ 15/16" TEE SYSTEM - DX24 MAIN TEE (12'-0" LONG)
2	USG DONN BRAND™ 15/16" TEE SYSTEM - DX216 CROSS TEE (2'-0" LONG)
3	USG DONN BRAND™ 15/16" TEE SYSTEM - M7 MOULDING (12'-0" LONG)
4	USG DONN BRAND™ 15/16" TEE SYSTEM - MS174 SHADOWLINE (12'-0" LONG)
5	USG DONN BRAND™ 15/16" TEE SYSTEM - MS274 SHADOWLINE (10'-0" LONG)
6	USG DONN BRAND™ 15/16" TEE SYSTEM - MS20 SHADOWLINE (10'-0" LONG)
7	BEMO FT01 CEILING TILE W/ P01 PERFORATION PATTERN (24"x 24"x 1" DEEP)
8	BEMO CC01 CEILING CORNICE CLEAT (FOR 3 3/4"x 5" CEILING CORNICE)
9	BEMO CC02 CEILING CORNICE (3 3/4"x 5")
10	

ISOMETRIC VIEWS

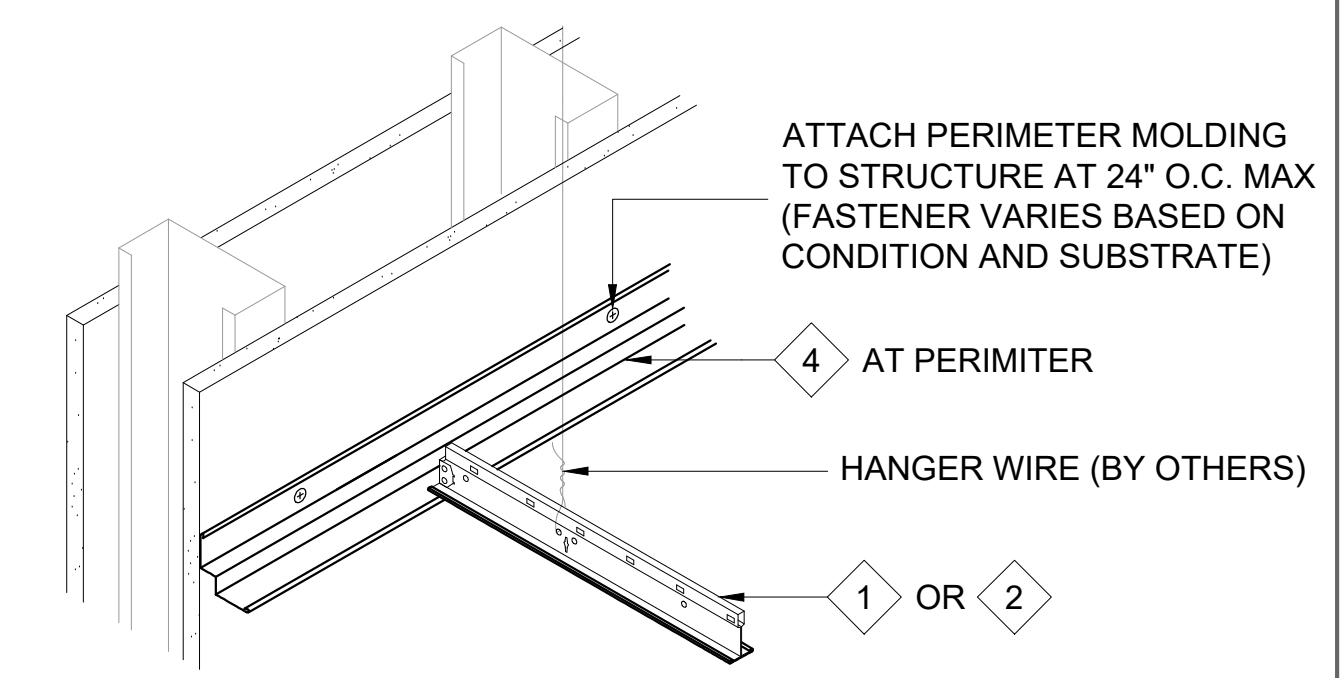
[NOTE: ISOMETRIC VIEWS ARE FOR VISUALIZATION ONLY - OBJECTS NOT TO SCALE]



WALL ANGLE END CONDITION ISOMETRIC VIEW



INTERSECTION ISOMETRIC VIEW



SHADOW MOLDING END CONDITION ISOMETRIC VIEW



BEMO CEILING TILE STANDARD DETAILS	PROJECT ADDRESS	CUSTOMER NAME	ARCHITECT NAME

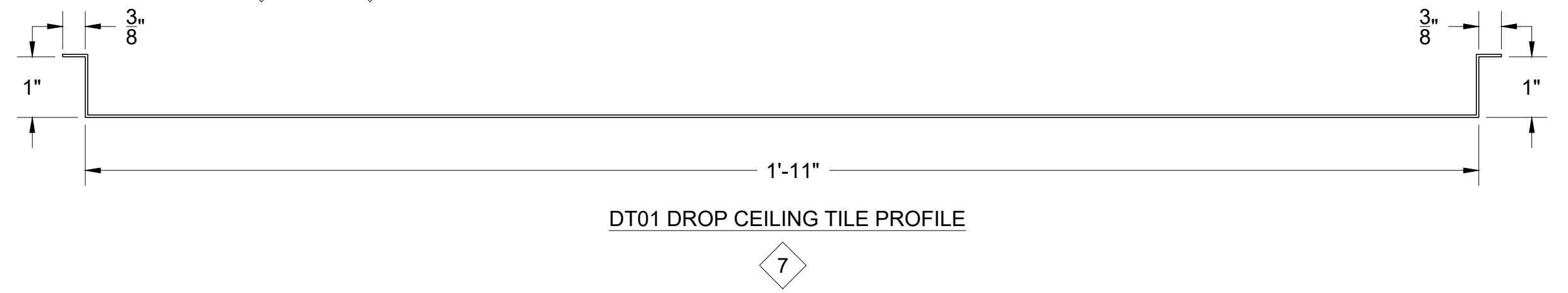
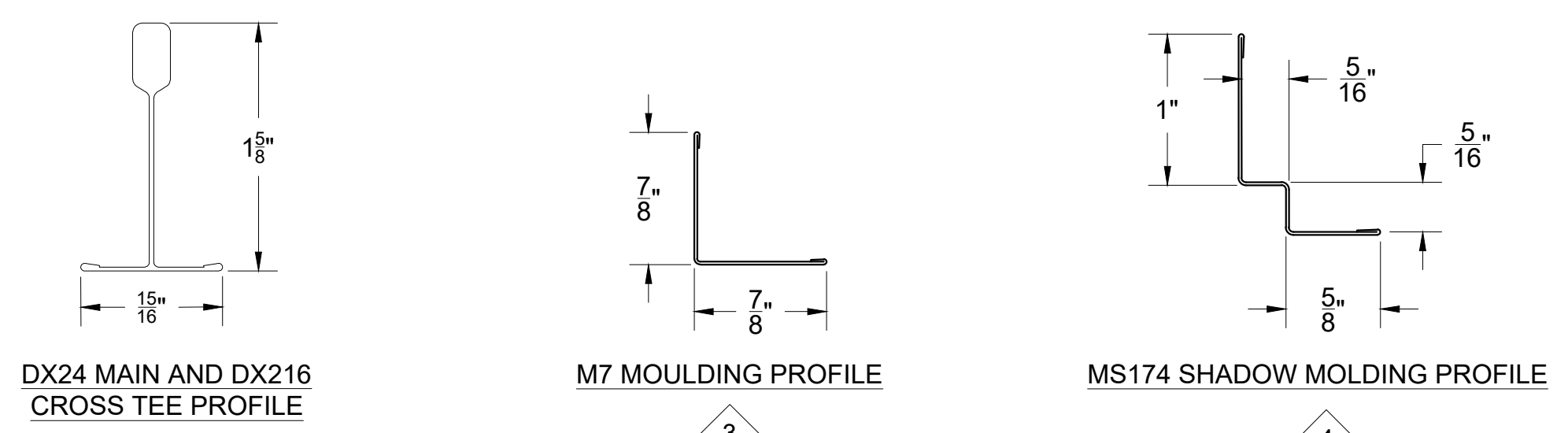
DRAWN:	J. GOSS	6/15/21
CHECKED:	D. GOSS	6/15/21
PROJECT NUMBER:		
NO.	REVISION / ISSUE	DATE

DWG TITLE  
 FT01 FLUSH TILE DETAILS

SCALE 6" = 1'-0"	DWG NO. D1
REV	

**NOTES:**  
 1. PREFERRED INSTALLATION: PROFILE AT EDGE OF PANEL TO BE SHOWN AT REVEAL MOLDING. FIELD-CUT AND BEND EDGE TO MATCH IF NECESSARY.  
 2. OPTIONAL INSTALLATION: SQUARE CUT AND ENCAPSULATE EDGE AT PERIMETER.  
 3. TYPICAL PANEL MODULE NOMINAL COVERAGE TO BE 24"x 24" SQUARE.  
 4. ALL FASTENERS TO PENETRATE A MINIMUM OF 3/4" THROUGH SUBSTRATE AND FRAMING.

THIS DETAIL IS GENERAL IN NATURE AND WILL BE MODIFIED TO MEET JOB SPECIFIC CONDITIONS



**FASTENER DESIGNATIONS**

MARK	DESCRIPTION	IMAGE
1	FASTENER VARIES BASED ON CONDITION AND SUBSTRATE	
2		
3		

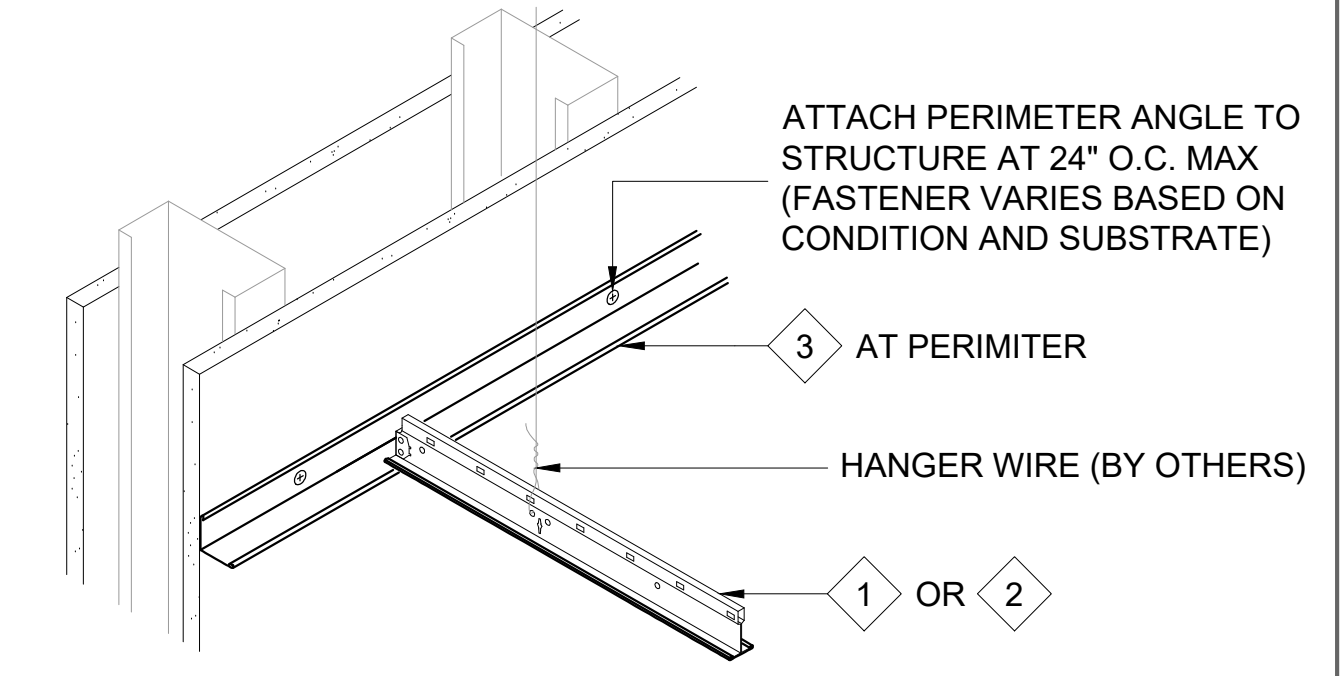
\* (1000 HRS OF CORROSION RESISTANT COATING IN ACCORDANCE WITH ASTM B117)

**MATERIAL DESIGNATIONS**

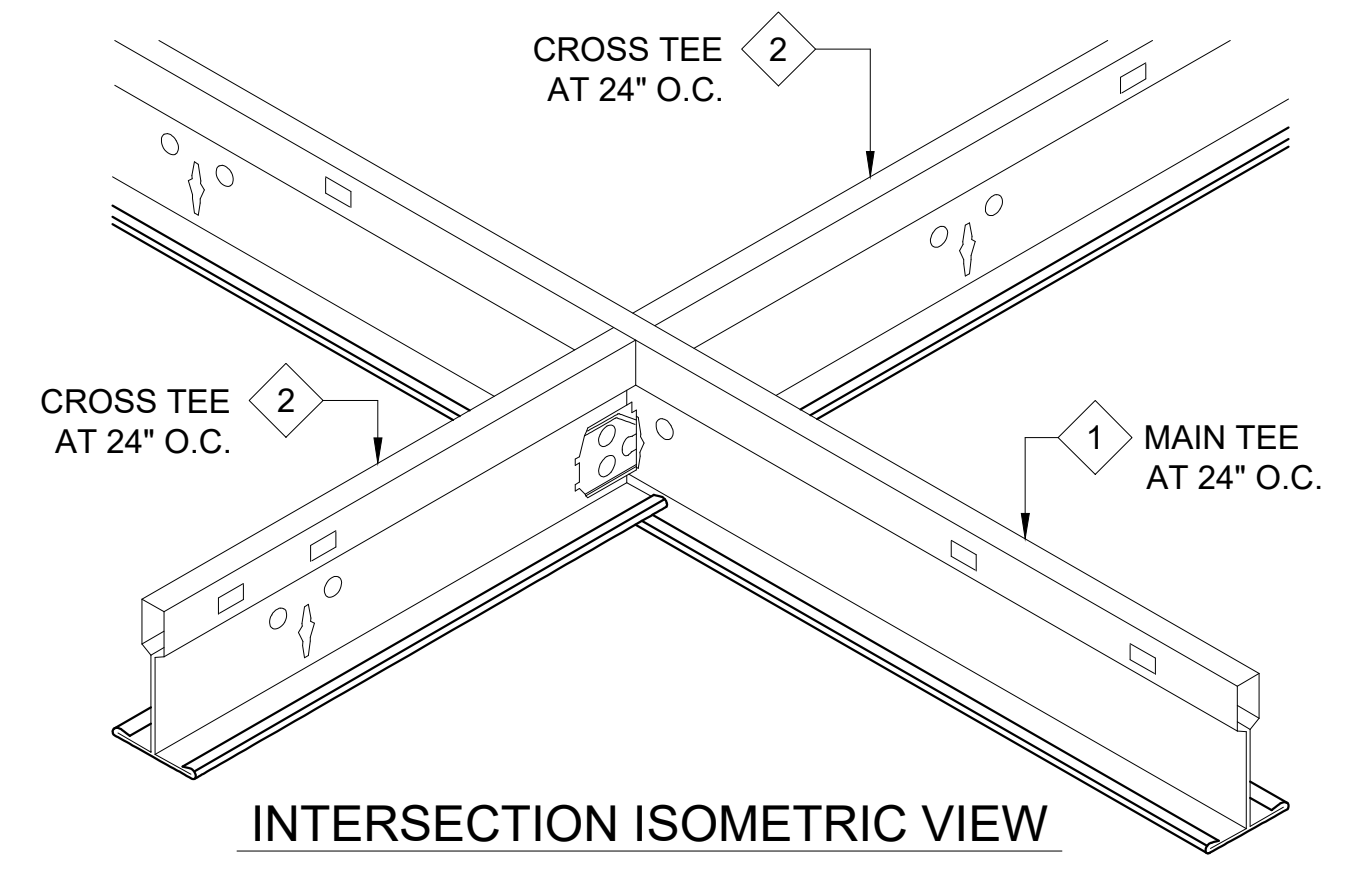
MARK	DESCRIPTION
1	USG DONN BRAND™ 15/16" TEE SYSTEM - DX24 MAIN TEE (12'-0" LONG)
2	USG DONN BRAND™ 15/16" TEE SYSTEM - DX216 CROSS TEE (2'-0" LONG)
3	USG DONN BRAND™ 15/16" TEE SYSTEM - M7 MOULDING (12'-0" LONG)
4	USG DONN BRAND™ 15/16" TEE SYSTEM - MS174 SHADOWLINE (12'-0" LONG)
5	USG DONN BRAND™ 15/16" TEE SYSTEM - MS274 SHADOWLINE (10'-0" LONG)
6	USG DONN BRAND™ 15/16" TEE SYSTEM - MS20 SHADOWLINE (10'-0" LONG)
7	BEMO DT01 CEILING TILE W/ P01 PERFORATION PATTERN (24"x 24"x 1" DEEP)
8	BEMO CC01 CEILING CORNICE CLEAT (FOR 3 3/4"x 5" CEILING CORNICE)
9	BEMO CC02 CEILING CORNICE (3 3/4"x 5")
10	

**ISOMETRIC VIEWS**

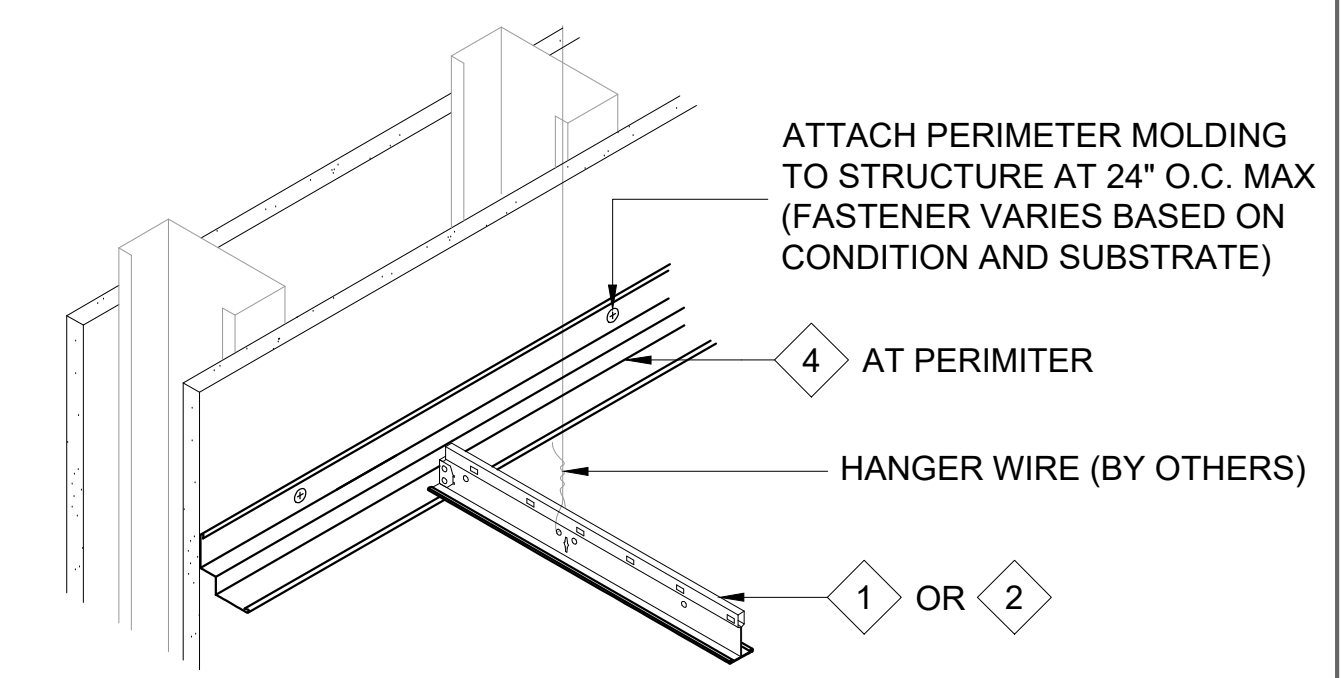
[NOTE: ISOMETRIC VIEWS ARE FOR VISUALIZATION ONLY - OBJECTS NOT TO SCALE]



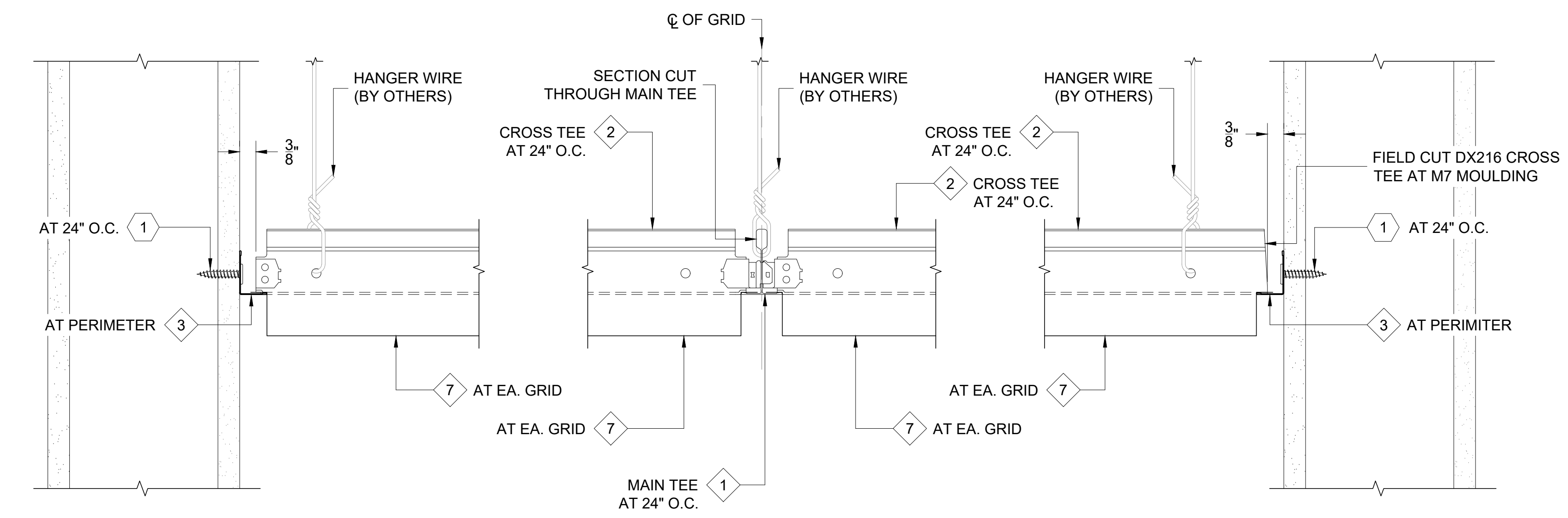
WALL ANGLE END CONDITION ISOMETRIC VIEW



INTERSECTION ISOMETRIC VIEW



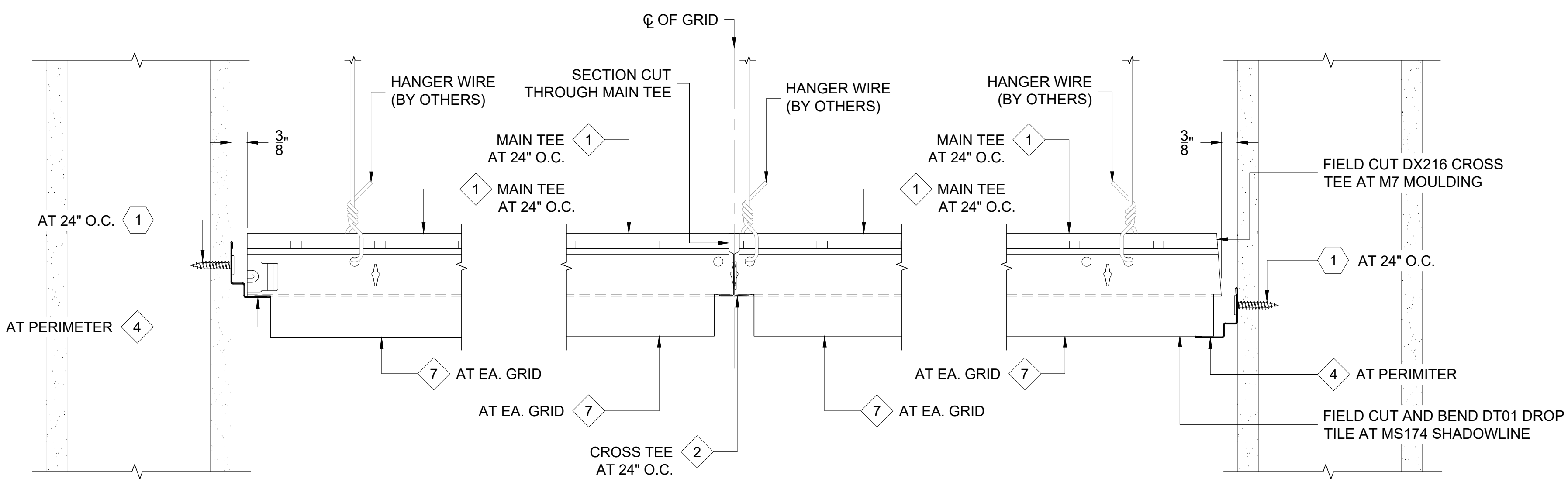
SHADOW MOLDING END CONDITION ISOMETRIC VIEW



1 FULL DT01 DROP CEILING TILE AT PERIMETER WITH M7 MOULDING  
REF. ARCH. DET.

2 DT01 DROP CEILING TILE AND GRID SECTION CUT THROUGH DX24 MAIN TEE  
REF. ARCH. DET.

3 FIELD CUT DT01 DROP CEILING TILE AND DX216 CROSS TEE AT PERIMETER WITH M7 MOULDING  
REF. ARCH. DET.



4 FULL DT01 DROP CEILING TILE AT PERIMETER WITH MS174 SHADOWLINE  
REF. ARCH. DET.

5 DT01 DROP CEILING TILE AND GRID SECTION CUT THROUGH DX216 CROSS TEE  
REF. ARCH. DET.

6 FIELD CUT DT01 DROP CEILING TILE AND DX216 CROSS TEE AT PERIMETER WITH MS174 SHADOWLINE  
REF. ARCH. DET.



BEMO CEILING TILE STANDARD DETAILS

PROJECT ADDRESS

CUSTOMER NAME

ARCHITECT NAME

DRAWN:	J. GOSS	6/15/21
CHECKED:	D. GOSS	6/15/21
PROJECT NUMBER:		
NO.	REVISION / ISSUE	DATE

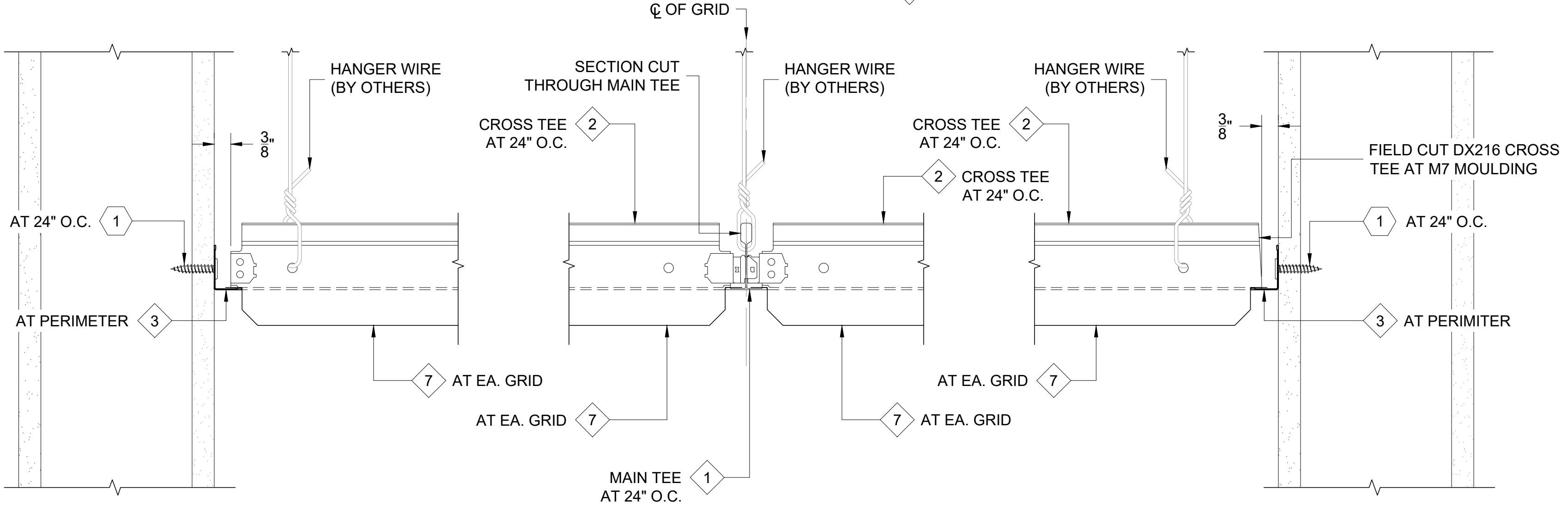
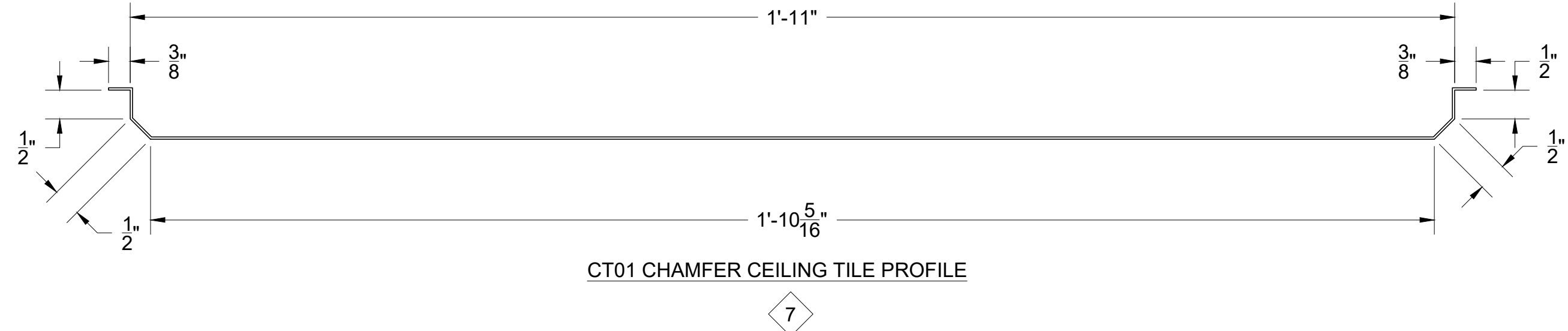
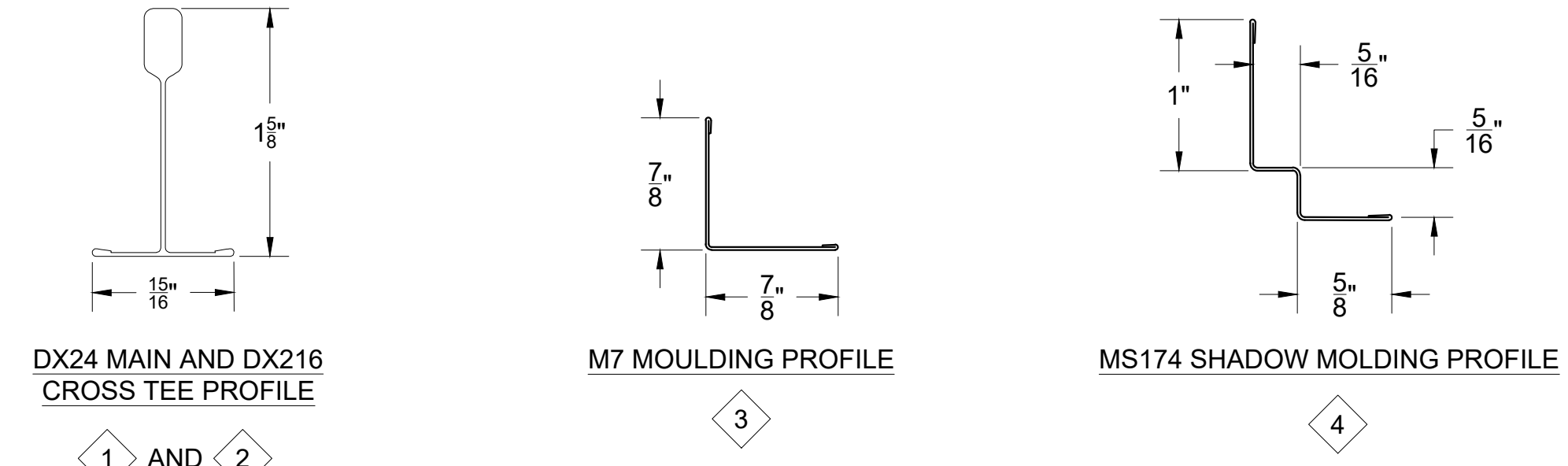
DWG TITLE  
DT01 DROP TILE DETAILS

SCALE  
6" = 1'-0"

DWG NO.  
D1

**NOTES:**  
 1. PREFERRED INSTALLATION: PROFILE AT EDGE OF PANEL TO BE SHOWN AT REVEAL MOLDING. FIELD-CUT AND BEND EDGE TO MATCH IF NECESSARY.  
 2. OPTIONAL INSTALLATION: SQUARE CUT AND ENCAPSULATE EDGE AT PERIMETER.  
 3. TYPICAL PANEL MODULE NOMINAL COVERAGE TO BE 24"x 24" SQUARE.  
 4. ALL FASTENERS TO PENETRATE A MINIMUM OF 3/4" THROUGH SUBSTRATE AND FRAMING.

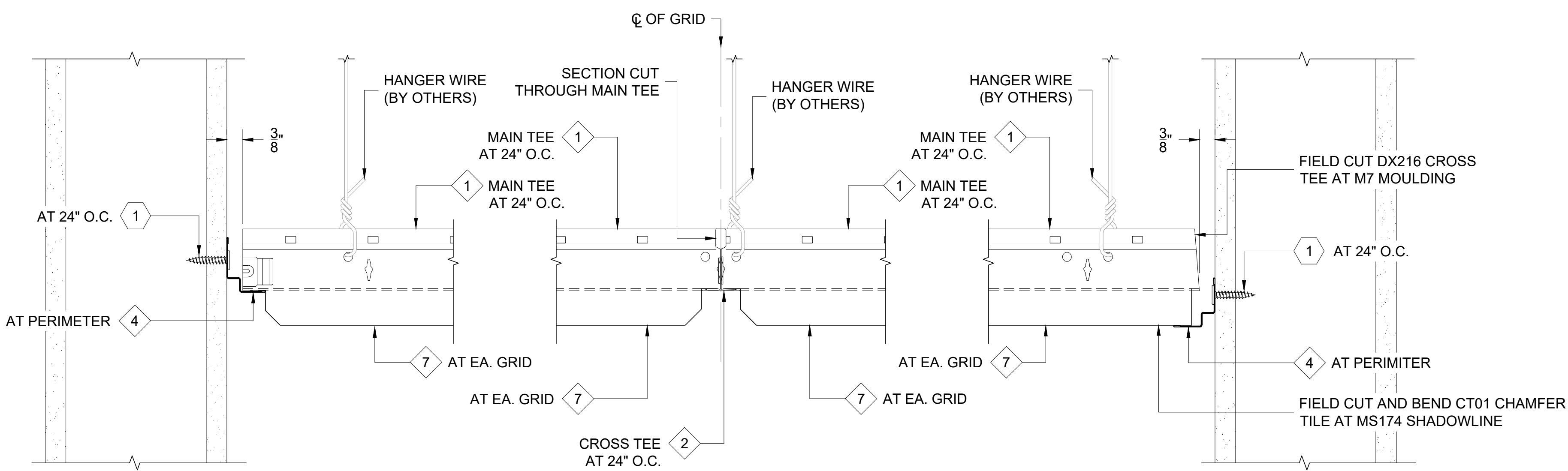
THIS DETAIL IS GENERAL IN NATURE AND WILL BE MODIFIED TO MEET JOB SPECIFIC CONDITIONS



1 FULL CT01 CHAMFER CEILING TILE AT PERIMETER WITH M7 MOULDING  
 D1 REF. ARCH. DET.

2 CT01 CHAMFER CEILING TILE AND GRID SECTION CUT THROUGH DX24 MAIN TEE  
 D1 REF. ARCH. DET.

3 FIELD CUT CT01 CHAMFER CEILING TILE AND DX216 CROSS TEE AT PERIMETER WITH M7 MOULDING  
 D1 REF. ARCH. DET.



4 FULL CT01 CHAMFER CEILING TILE AT PERIMETER WITH MS174 SHADOWLINE  
 D1 REF. ARCH. DET.

5 CT01 CHAMFER CEILING TILE AND GRID SECTION CUT THROUGH DX216 CROSS TEE  
 D1 REF. ARCH. DET.

6 FIELD CUT CT01 CHAMFER CEILING TILE AND DX216 CROSS TEE AT PERIMETER WITH MS174 SHADOWLINE  
 D1 REF. ARCH. DET.

**FASTENER DESIGNATIONS**

MARK	DESCRIPTION	IMAGE
1	FASTENER VARIES BASED ON CONDITION AND SUBSTRATE	
2		
3		

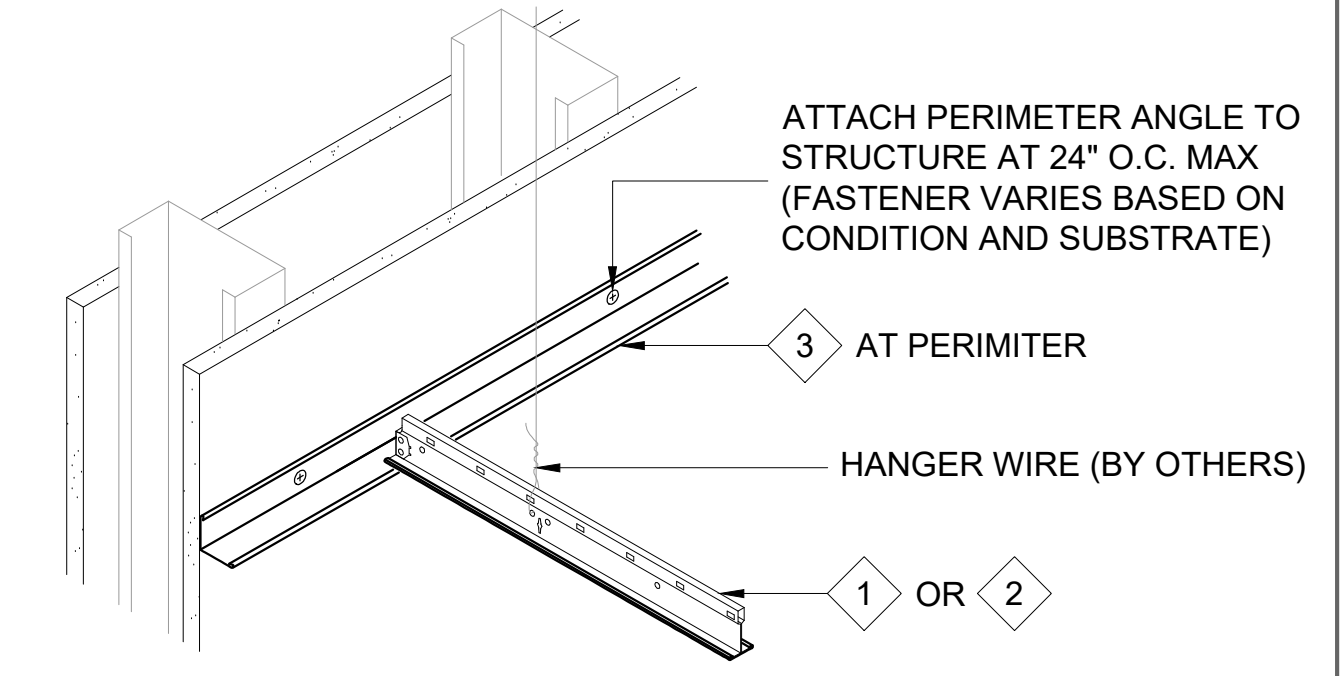
\* (1000 HRS OF CORROSION RESISTANT COATING IN ACCORDANCE WITH ASTM B117)

**MATERIAL DESIGNATIONS**

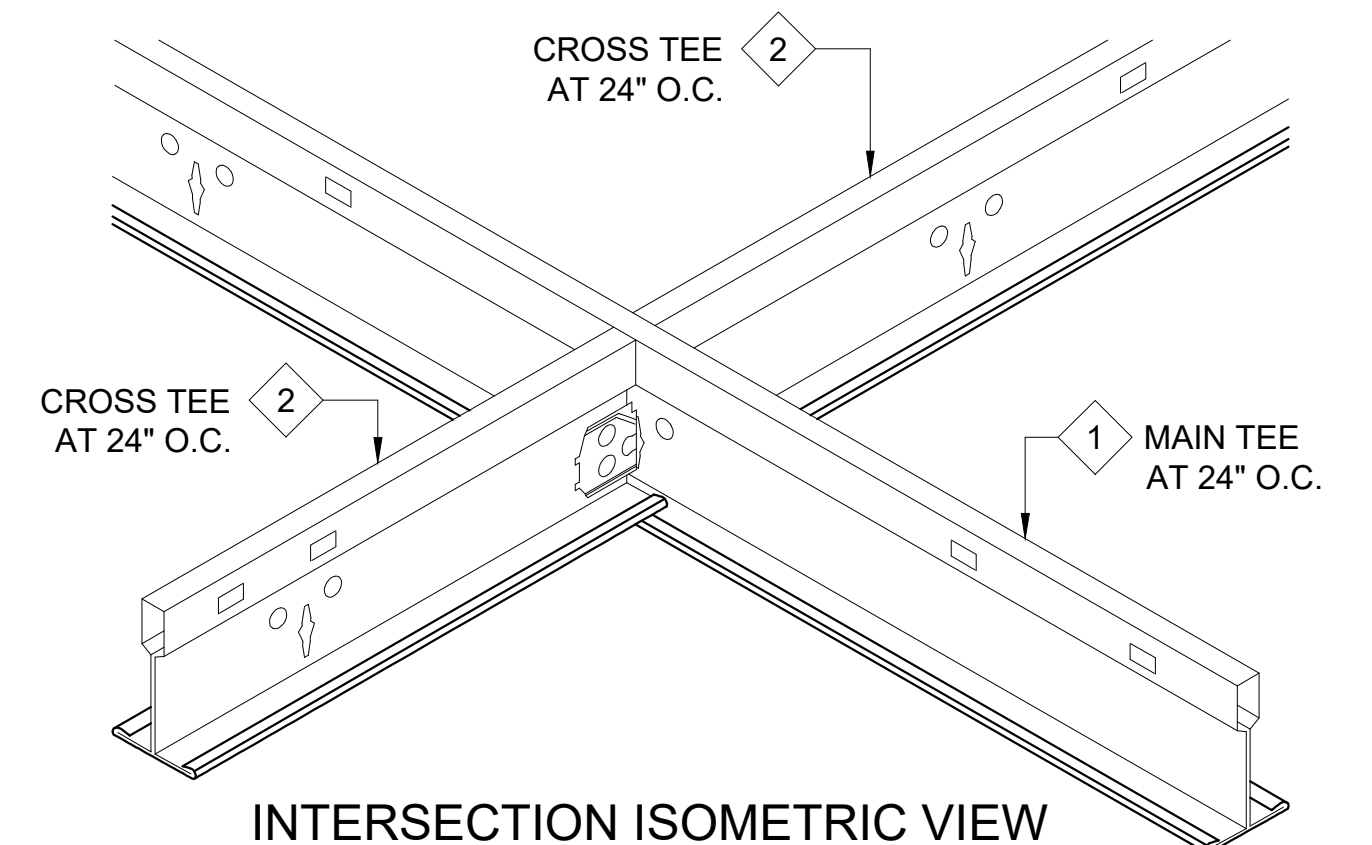
MARK	DESCRIPTION
1	USG DONN BRAND™ 15/16" TEE SYSTEM - DX24 MAIN TEE (12'-0" LONG)
2	USG DONN BRAND™ 15/16" TEE SYSTEM - DX216 CROSS TEE (2'-0" LONG)
3	USG DONN BRAND™ 15/16" TEE SYSTEM - M7 MOULDING (12'-0" LONG)
4	USG DONN BRAND™ 15/16" TEE SYSTEM - MS174 SHADOWLINE (12'-0" LONG)
5	USG DONN BRAND™ 15/16" TEE SYSTEM - MS274 SHADOWLINE (10'-0" LONG)
6	USG DONN BRAND™ 15/16" TEE SYSTEM - MS20 SHADOWLINE (10'-0" LONG)
7	BEMO CT01 CEILING TILE W/ P01 PERFORATION PATTERN (24"x 24"x 1" DEEP)
8	BEMO CC01 CEILING CORNICE CLEAT (FOR 3 3/4"x 5" CEILING CORNICE)
9	BEMO CC02 CEILING CORNICE (3 3/4"x 5")
10	

**ISOMETRIC VIEWS**

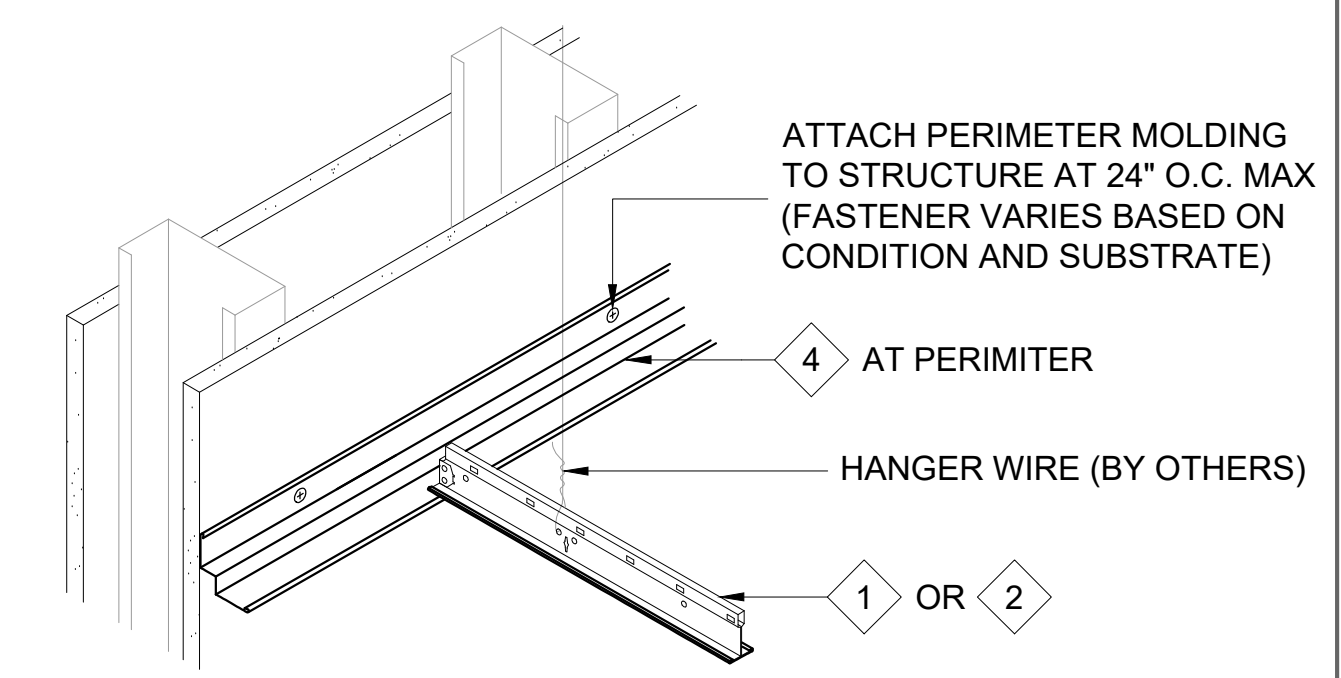
[NOTE: ISOMETRIC VIEWS ARE FOR VISUALIZATION ONLY - OBJECTS NOT TO SCALE]



WALL ANGLE END CONDITION ISOMETRIC VIEW



INTERSECTION ISOMETRIC VIEW



SHADOW MOLDING END CONDITION ISOMETRIC VIEW



BEMO CEILING TILE STANDARD DETAILS	PROJECT ADDRESS	CUSTOMER NAME	ARCHITECT NAME

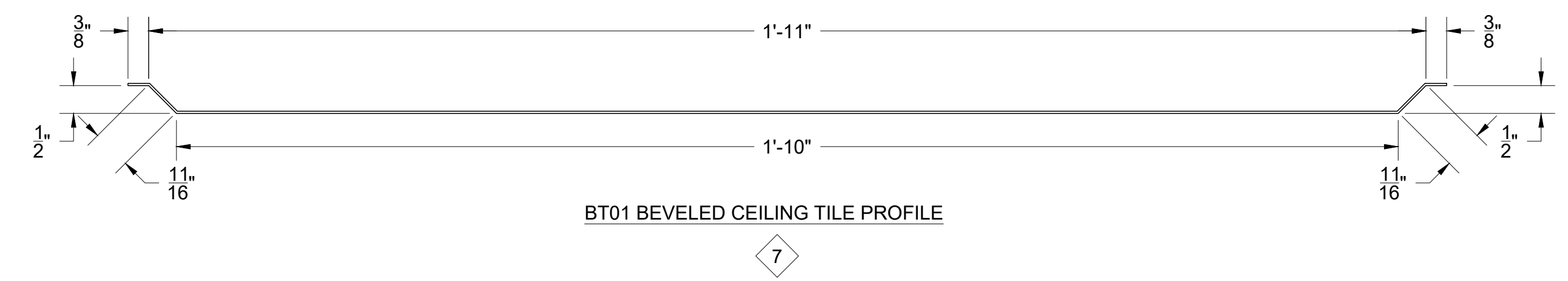
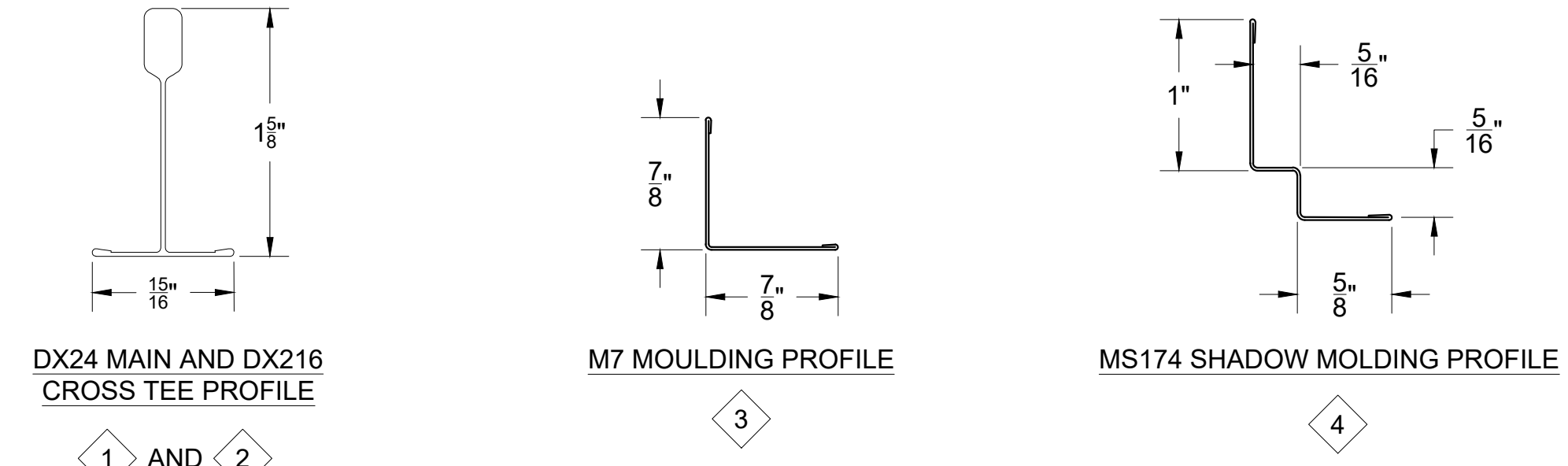
DRAWN:	J. GOSS	6/15/21
CHECKED:	D. GOSS	6/15/21
PROJECT NUMBER:		
NO.	REVISION / ISSUE	DATE

DWG TITLE  
 CT01 CHAMFER TILE DETAILS

SCALE 6" = 1'-0"	DWG NO. <b>D1</b>
REV	

**NOTES:**  
 1. PREFERRED INSTALLATION: PROFILE AT EDGE OF PANEL TO BE SHOWN AT REVEAL MOLDING. FIELD-CUT AND BEND EDGE TO MATCH IF NECESSARY.  
 2. OPTIONAL INSTALLATION: SQUARE CUT AND ENCAPSULATE EDGE AT PERIMETER.  
 3. TYPICAL PANEL MODULE NOMINAL COVERAGE TO BE 24"x 24" SQUARE.  
 4. ALL FASTENERS TO PENETRATE A MINIMUM OF 3/4" THROUGH SUBSTRATE AND FRAMING.

THIS DETAIL IS GENERAL IN NATURE AND WILL BE MODIFIED TO MEET JOB SPECIFIC CONDITIONS



**FASTENER DESIGNATIONS**

MARK	DESCRIPTION	IMAGE
1 2 3	FASTENER VARIES BASED ON CONDITION AND SUBSTRATE	

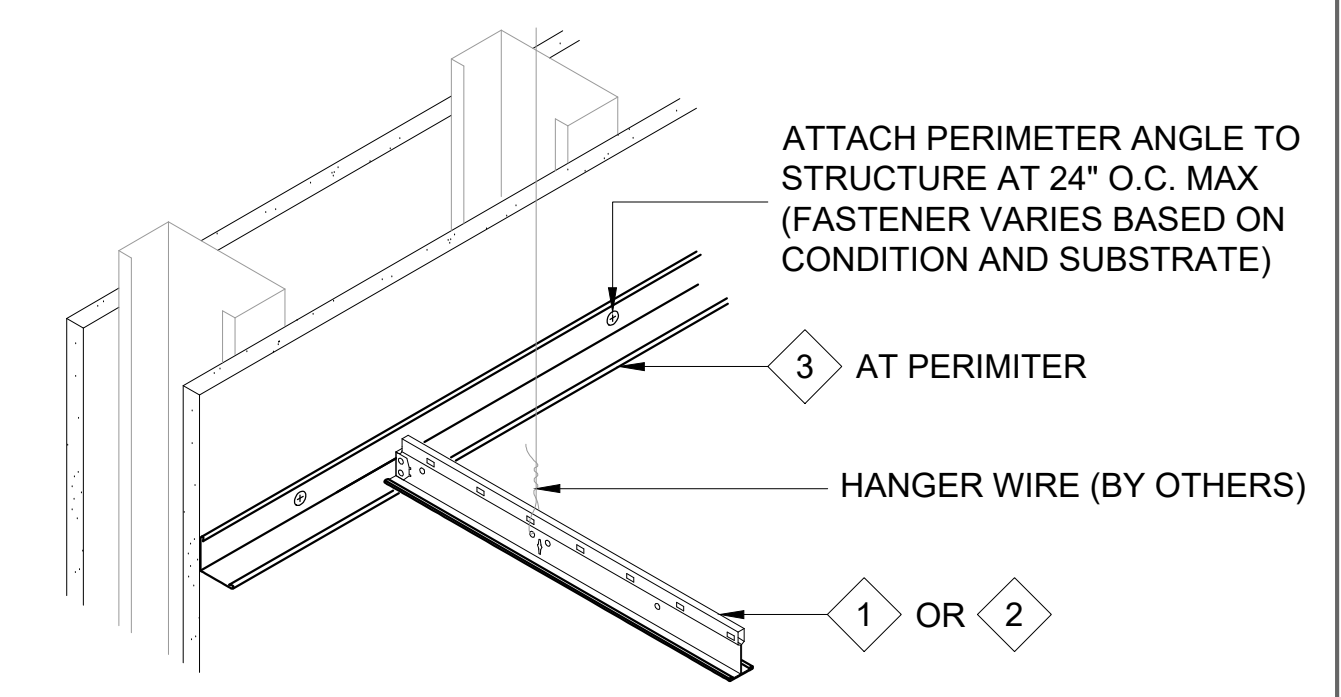
\* (1000 HRS OF CORROSION RESISTANT COATING IN ACCORDANCE WITH ASTM B117)

**MATERIAL DESIGNATIONS**

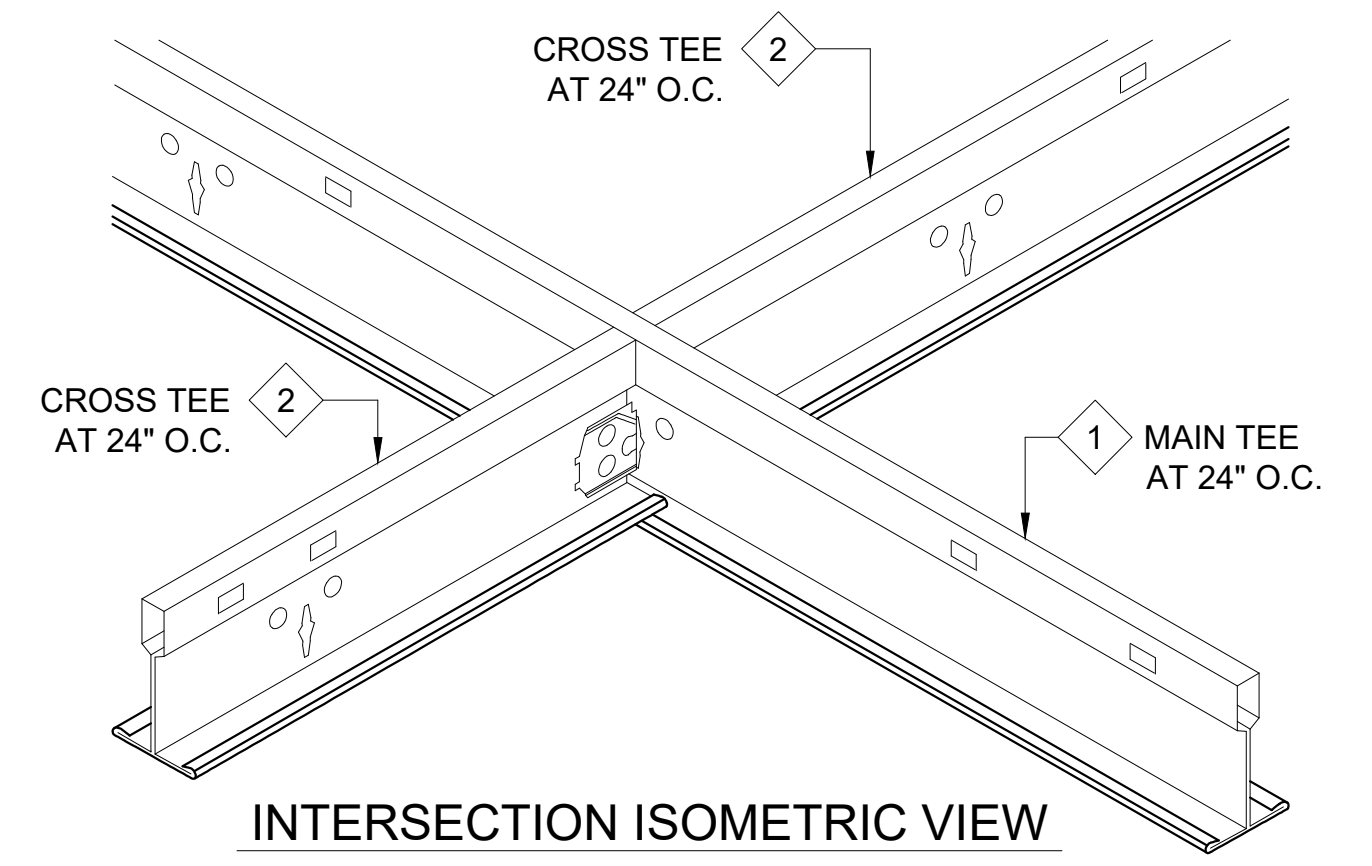
MARK	DESCRIPTION
1	USG DONN BRAND™ 15/16" TEE SYSTEM - DX24 MAIN TEE (12'-0" LONG)
2	USG DONN BRAND™ 15/16" TEE SYSTEM - DX216 CROSS TEE (2'-0" LONG)
3	USG DONN BRAND™ 15/16" TEE SYSTEM - M7 MOULDING (12'-0" LONG)
4	USG DONN BRAND™ 15/16" TEE SYSTEM - MS174 SHADOWLINE (12'-0" LONG)
5	USG DONN BRAND™ 15/16" TEE SYSTEM - MS274 SHADOWLINE (10'-0" LONG)
6	USG DONN BRAND™ 15/16" TEE SYSTEM - MS20 SHADOWLINE (10'-0" LONG)
7	BEMO BT01 CEILING TILE W/ P01 PERFORATION PATTERN (24"x 24"x 1/2" DEEP)
8	BEMO CC01 CEILING CORNICE CLEAT (FOR 3 3/4"x 5" CEILING CORNICE)
9	BEMO CC02 CEILING CORNICE (3 3/4"x 5")
10	

**ISOMETRIC VIEWS**

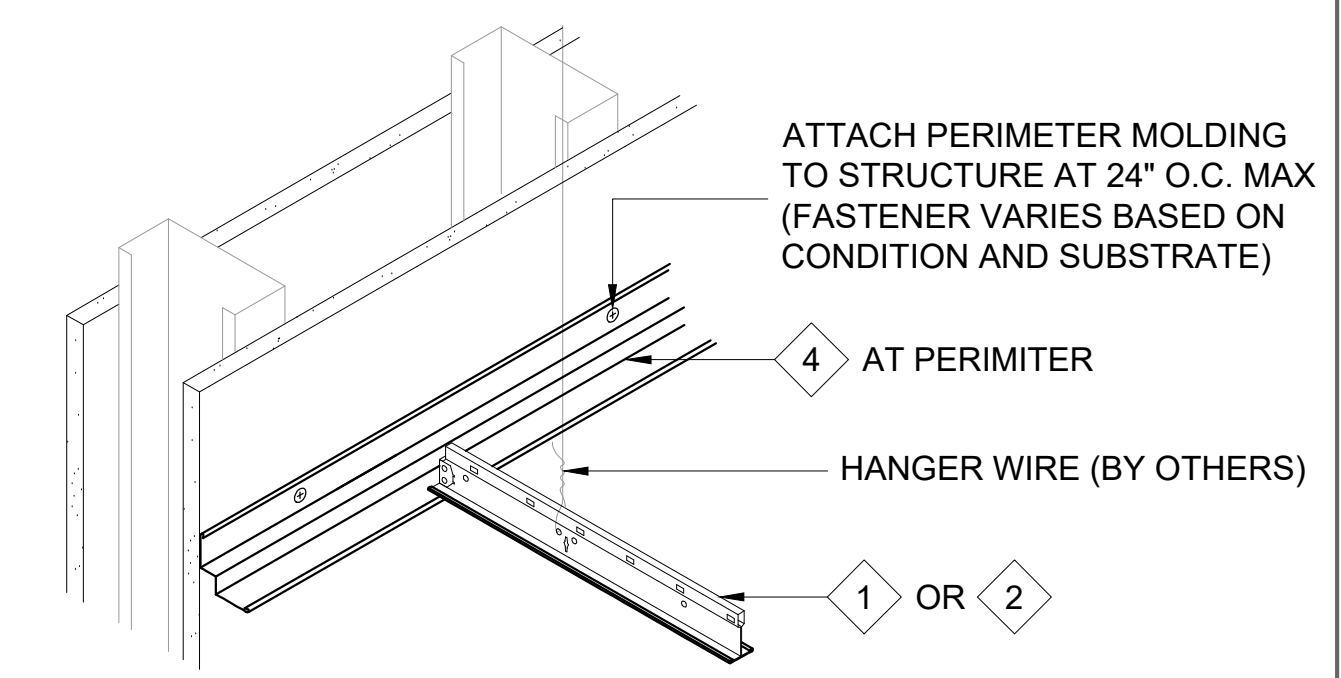
[NOTE: ISOMETRIC VIEWS ARE FOR VISUALIZATION ONLY - OBJECTS NOT TO SCALE]



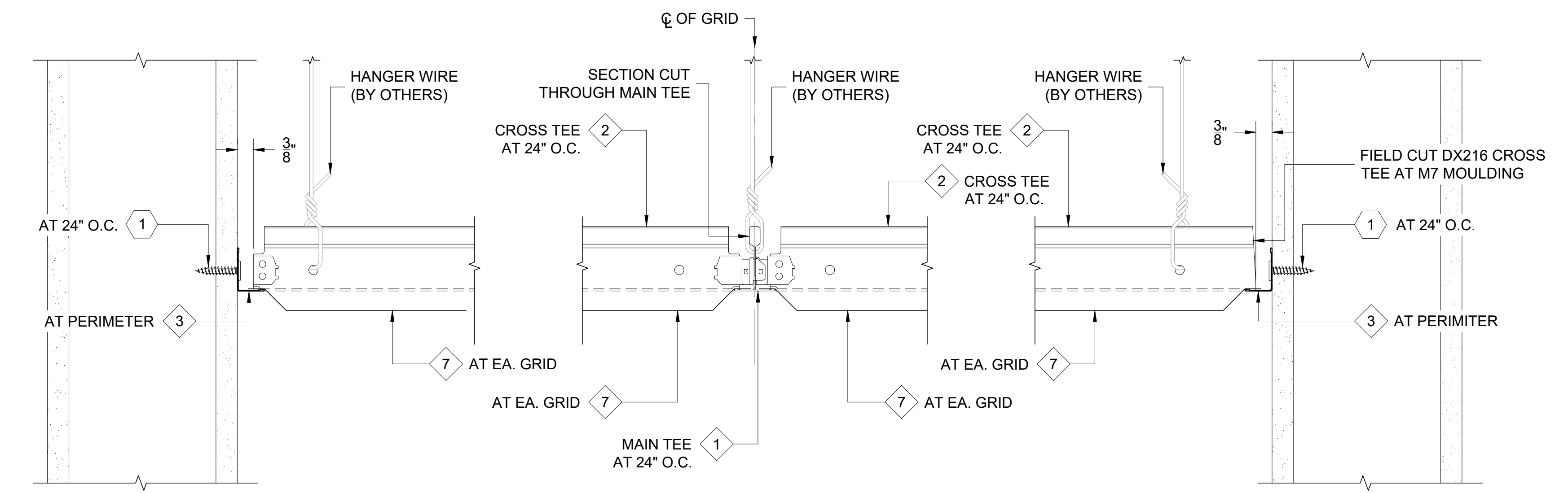
WALL ANGLE END CONDITION ISOMETRIC VIEW



INTERSECTION ISOMETRIC VIEW



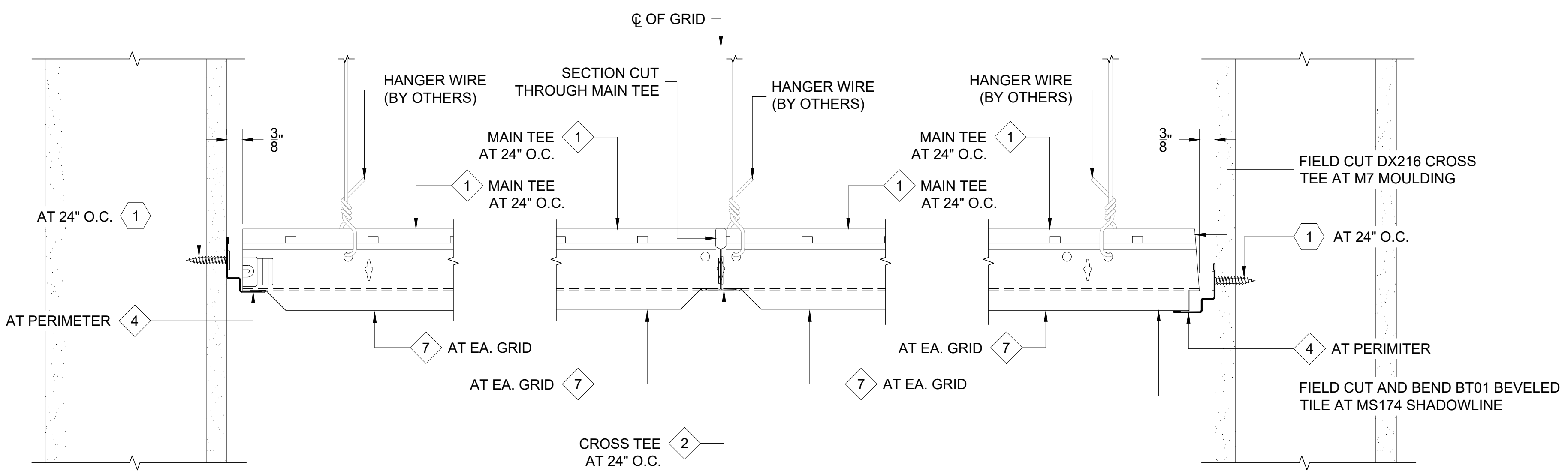
SHADOW MOLDING END CONDITION ISOMETRIC VIEW



1 FULL BT01 BEVELED CEILING TILE AT PERIMETER WITH M7 MOULDING  
 D1 REF. ARCH. DET.

2 BT01 BEVELED CEILING TILE AND GRID SECTION CUT THROUGH DX24 MAIN TEE  
 D1 REF. ARCH. DET.

3 FIELD CUT BT01 BEVELED CEILING TILE AND DX216 CROSS TEE AT PERIMETER WITH M7 MOULDING  
 D1 REF. ARCH. DET.



4 FULL BT01 BEVELED CEILING TILE AT PERIMETER WITH MS174 SHADOWLINE  
 D1 REF. ARCH. DET.

5 BT01 BEVELED CEILING TILE AND GRID SECTION CUT THROUGH DX216 CROSS TEE  
 D1 REF. ARCH. DET.

6 FIELD CUT BT01 BEVELED CEILING TILE AND DX216 CROSS TEE AT PERIMETER WITH MS174 SHADOWLINE  
 D1 REF. ARCH. DET.



BEMO CEILING TILE STANDARD DETAILS  
 PROJECT ADDRESS  
 CUSTOMER NAME  
 ARCHITECT NAME

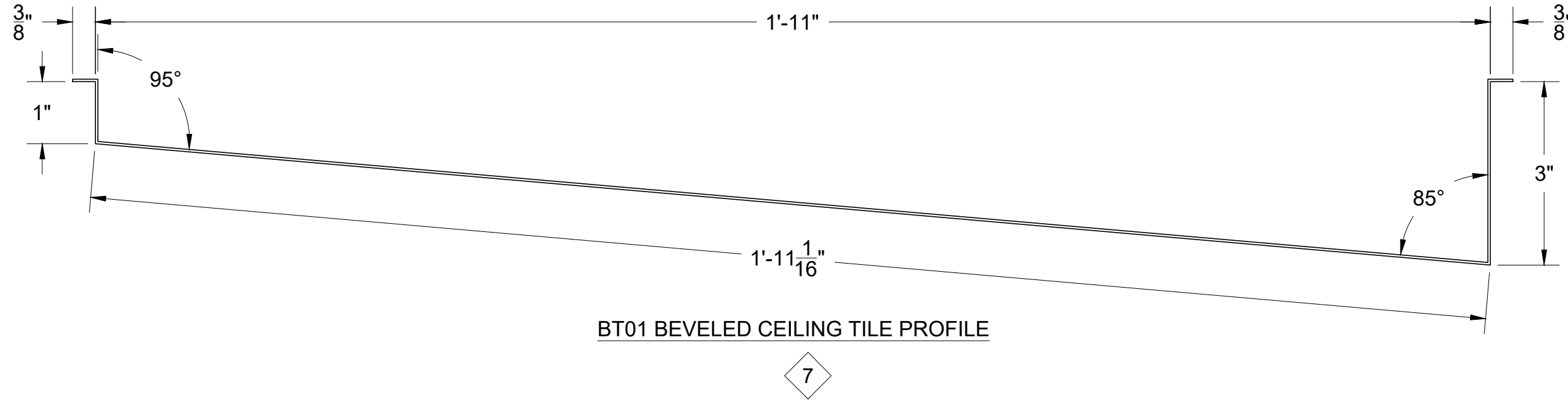
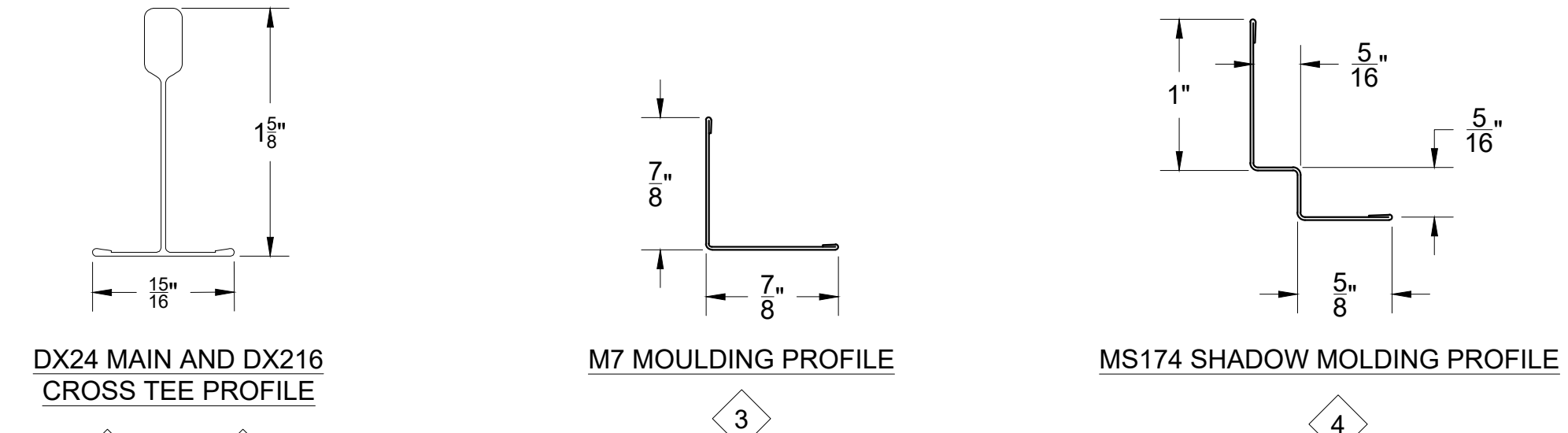
DRAWN:	J. GOSS	6/15/21
CHECKED:	D. GOSS	6/15/21
PROJECT NUMBER:		
NO.	REVISION / ISSUE	DATE

DWG TITLE  
 BT01 BEVELED TILE DETAILS

SCALE 6" = 1'-0"	DWG NO. <b>D1</b>
---------------------	----------------------

- NOTES:**
1. PREFERRED INSTALLATION: PROFILE AT EDGE OF PANEL TO BE SHOWN AT REVEAL MOLDING. FIELD-CUT AND BEND EDGE TO MATCH IF NECESSARY.
  2. OPTIONAL INSTALLATION: SQUARE CUT AND ENCAPSULATE EDGE AT PERIMETER.
  3. TYPICAL PANEL MODULE NOMINAL COVERAGE TO BE 24"x 24" SQUARE.
  4. ALL FASTENERS TO PENETRATE A MINIMUM OF 3/4" THROUGH SUBSTRATE AND FRAMING.

THIS DETAIL IS GENERAL IN NATURE AND WILL BE MODIFIED TO MEET JOB SPECIFIC CONDITIONS



**FASTENER DESIGNATIONS**

MARK	DESCRIPTION	IMAGE
1	FASTENER VARIES BASED ON CONDITION AND SUBSTRATE	
2		
3		

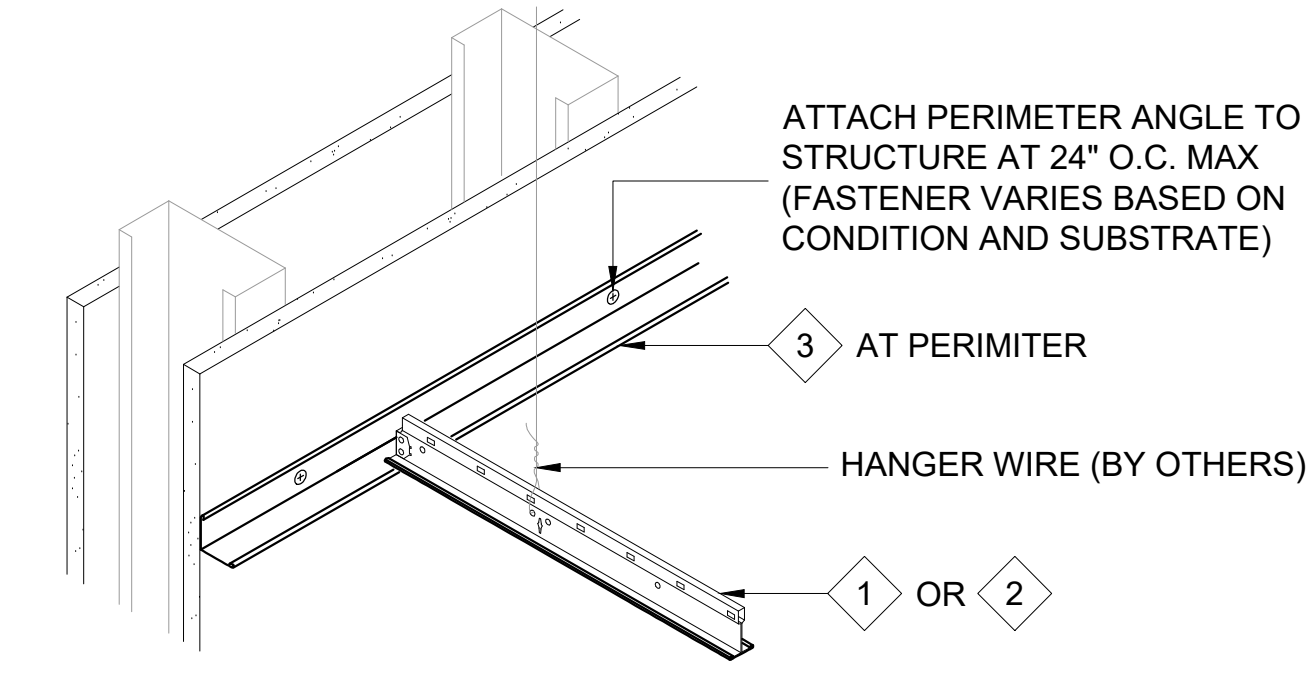
\* (1000 HRS OF CORROSION RESISTANT COATING IN ACCORDANCE WITH ASTM B117)

**MATERIAL DESIGNATIONS**

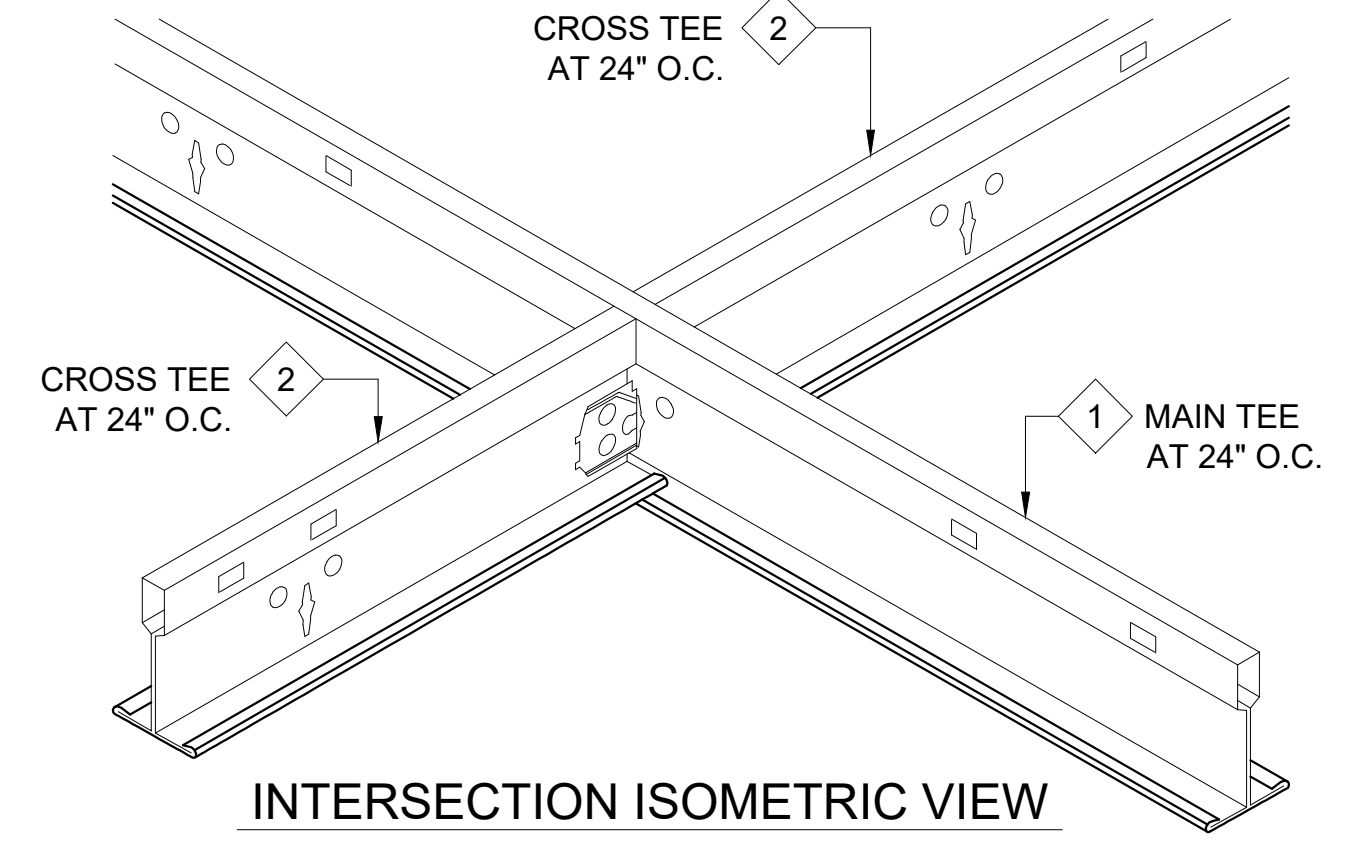
MARK	DESCRIPTION
1	USG DONN BRAND™ 15/16" TEE SYSTEM - DX24 MAIN TEE (12'-0" LONG)
2	USG DONN BRAND™ 15/16" TEE SYSTEM - DX216 CROSS TEE (2'-0" LONG)
3	USG DONN BRAND™ 15/16" TEE SYSTEM - M7 MOULDING (12'-0" LONG)
4	USG DONN BRAND™ 15/16" TEE SYSTEM - MS174 SHADOWLINE (12'-0" LONG)
5	USG DONN BRAND™ 15/16" TEE SYSTEM - MS274 SHADOWLINE (10'-0" LONG)
6	USG DONN BRAND™ 15/16" TEE SYSTEM - MS20 SHADOWLINE (10'-0" LONG)
7	BEMO TT01 CEILING TILE W/ P01 PERFORATION PATTERN (24"x 24"x 3" DEEP)
8	BEMO CC01 CEILING CORNICE CLEAT (FOR 3 3/4"x 5" CEILING CORNICE)
9	BEMO CC02 CEILING CORNICE (3 3/4"x 5")
10	

**ISOMETRIC VIEWS**

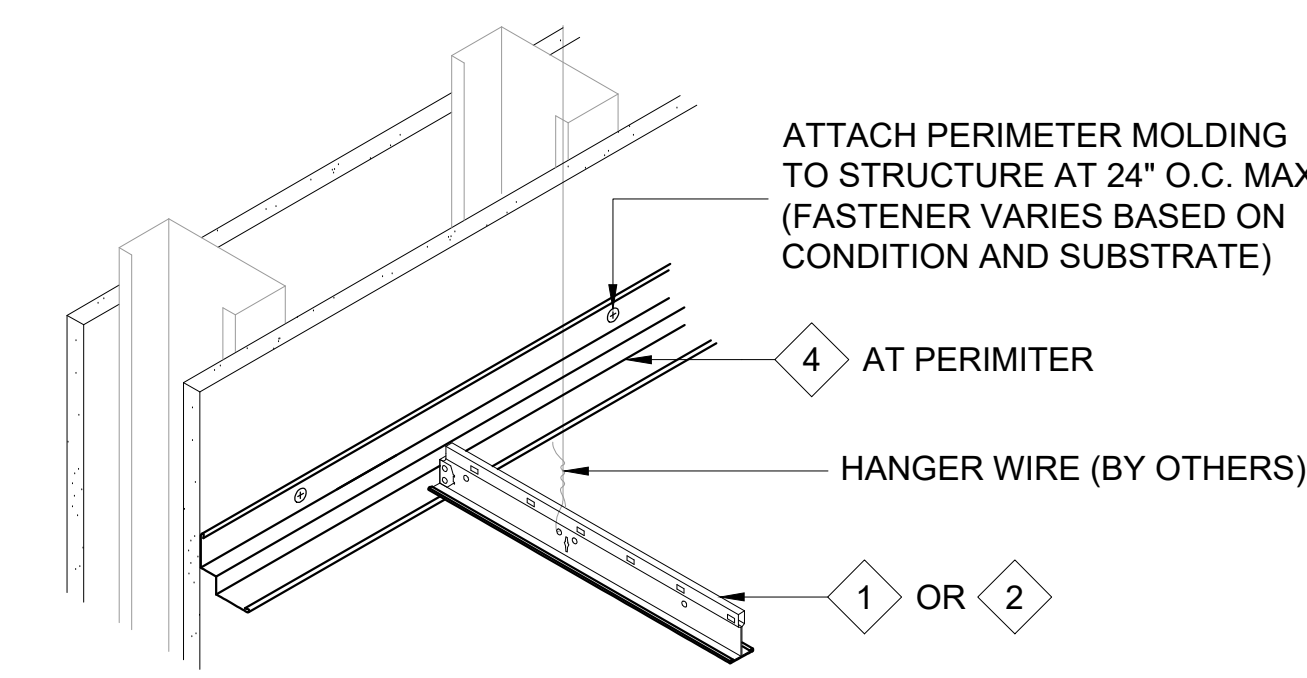
[NOTE: ISOMETRIC VIEWS ARE FOR VISUALIZATION ONLY - OBJECTS NOT TO SCALE]



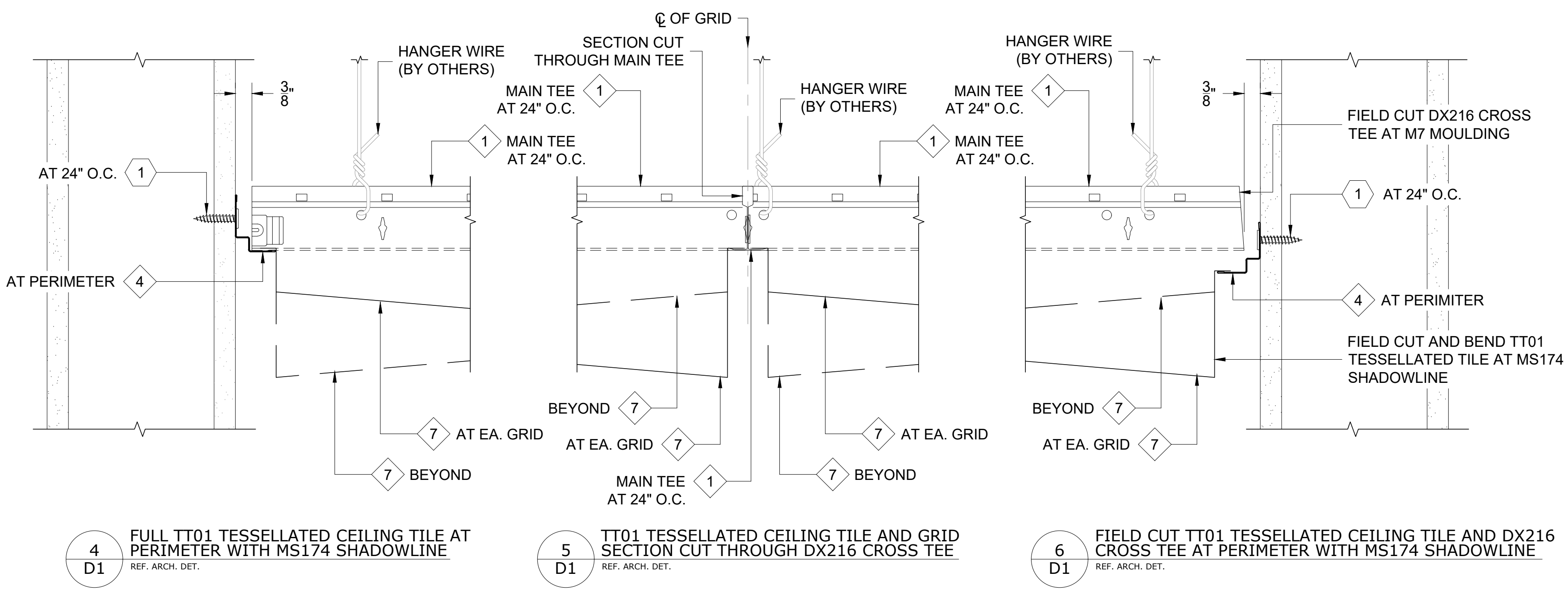
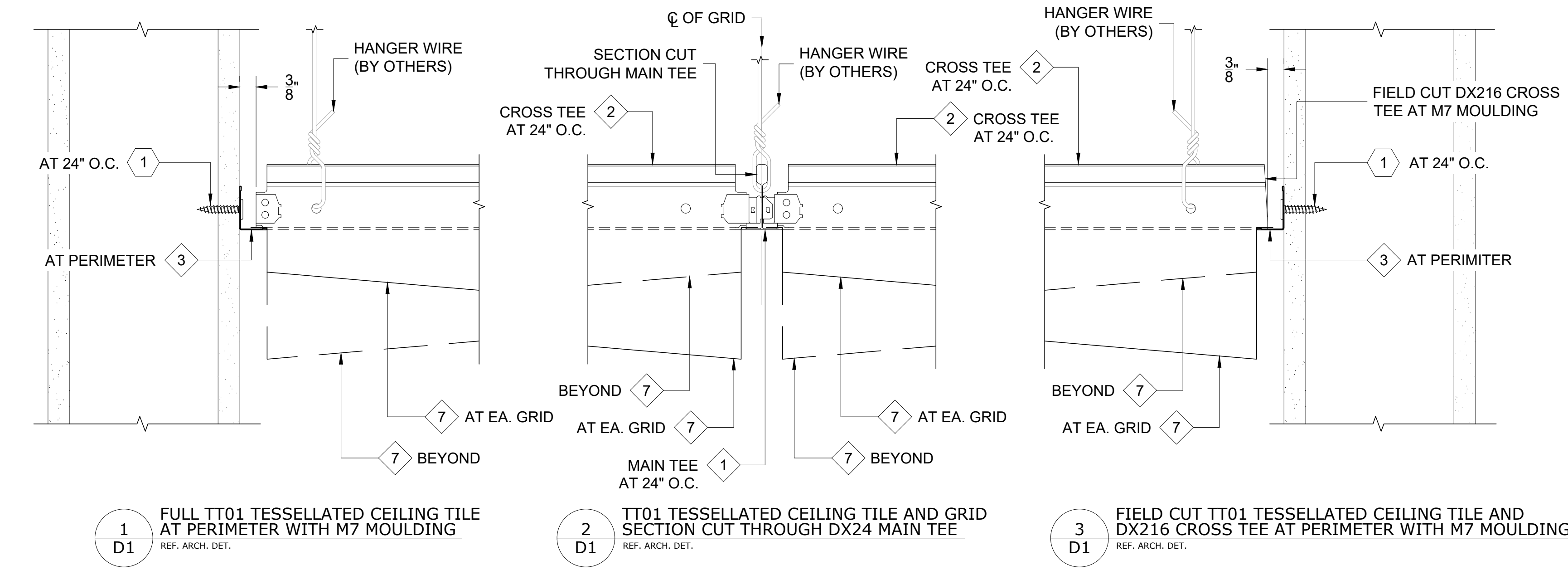
WALL ANGLE END CONDITION ISOMETRIC VIEW



INTERSECTION ISOMETRIC VIEW



SHADOW MOLDING END CONDITION ISOMETRIC VIEW



BEMO CEILING TILE STANDARD DETAILS	PROJECT ADDRESS	
	CUSTOMER NAME	
	ARCHITECT NAME	

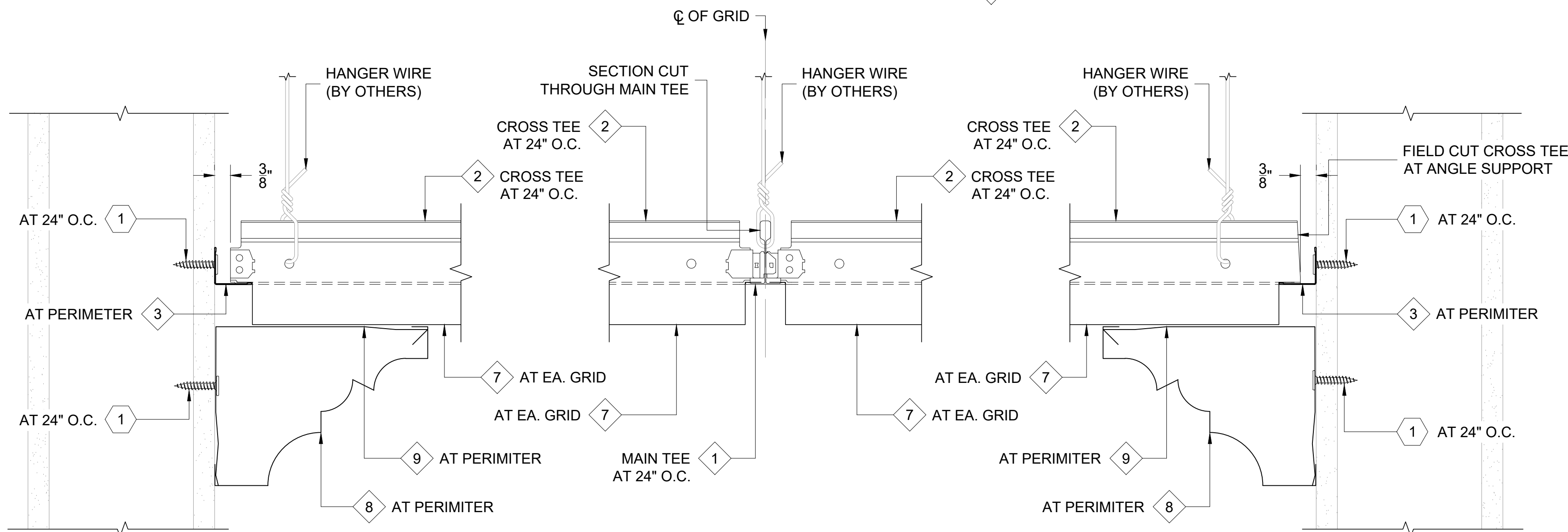
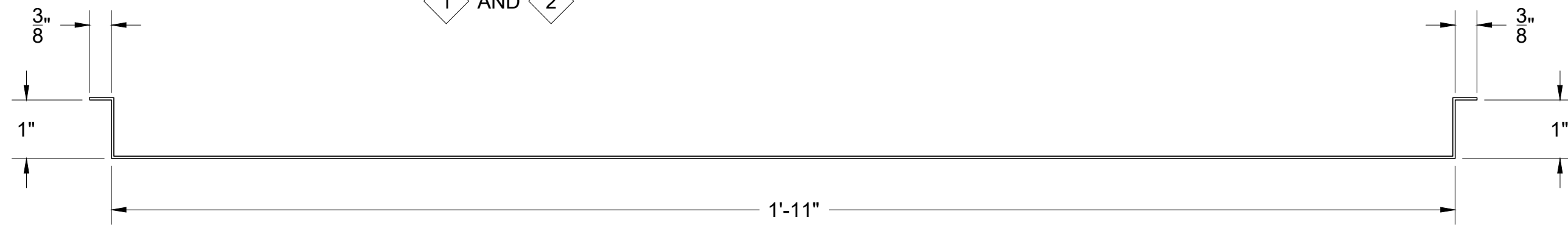
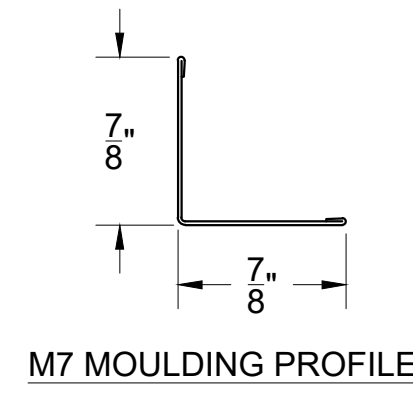
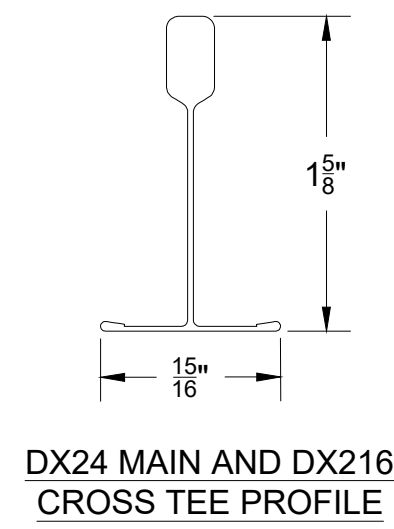
DRAWN:	J. GOSS	6/15/21
CHECKED:	D. GOSS	6/15/21
PROJECT NUMBER:		
NO.	REVISION / ISSUE	DATE

DWG TITLE  
TT01 TESSELLATED TILE DETAILS

SCALE 6" = 1'-0"	DWG NO. <b>D1</b>
---------------------	----------------------

- NOTES:
- PREFERRED INSTALLATION: PROFILE AT EDGE OF PANEL TO BE SHOWN AT REVEAL MOLDING. FIELD-CUT AND BEND EDGE TO MATCH IF NECESSARY.
  - OPTIONAL INSTALLATION: SQUARE CUT AND ENCAPSULATE EDGE AT PERIMETER.
  - TYPICAL PANEL MODULE NOMINAL COVERAGE TO BE 24"x 24" SQUARE.
  - ALL FASTENERS TO PENETRATE A MINIMUM OF 3/4" THROUGH SUBSTRATE AND FRAMING.

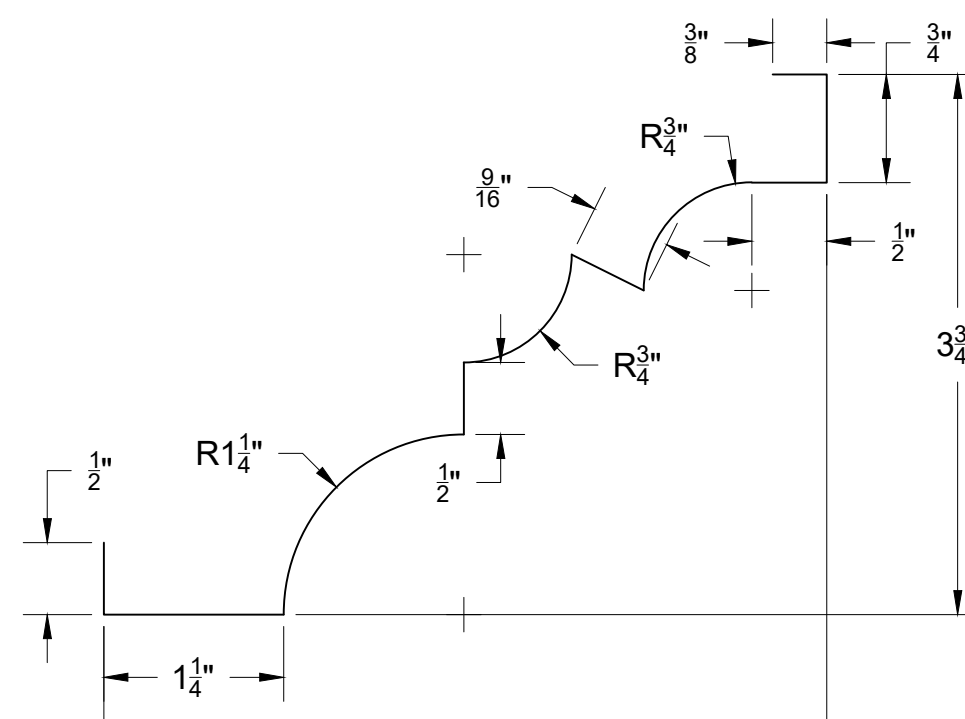
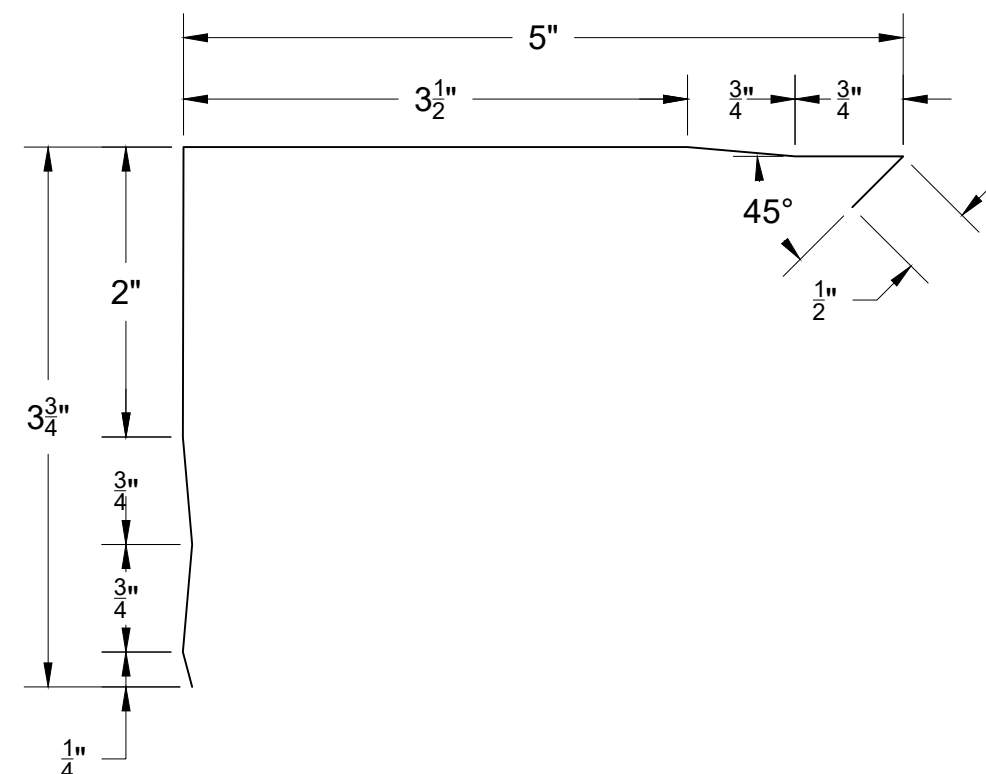
THIS DETAIL IS GENERAL IN NATURE AND WILL BE MODIFIED TO MEET JOB SPECIFIC CONDITIONS



1 D1 FULL CEILING PANEL WITH CEILING CORNICE AT PERIMETER  
REF. ARCH. DET.

2 D1 PANEL AND GRID SECTION CUT THROUGH MAIN TEE  
REF. ARCH. DET.

3 D1 SQUARE CUT PANEL WITH CEILING CORNICE AT PERIMETER  
REF. ARCH. DET.



### FASTENER DESIGNATIONS

MARK	DESCRIPTION	IMAGE
1	FASTENER VARIES BASED ON CONDITION AND SUBSTRATE	
2		
3		
4		
5		
6		
7		
8		
9		
10		
11		
12		

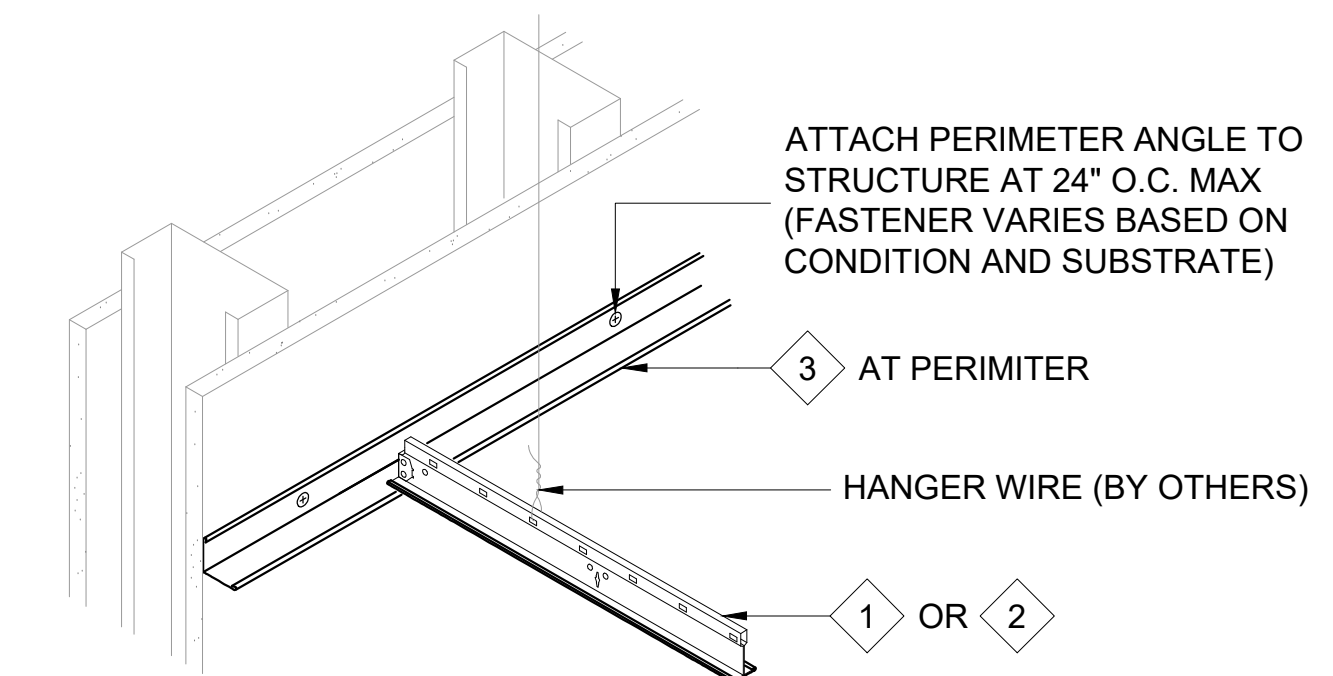
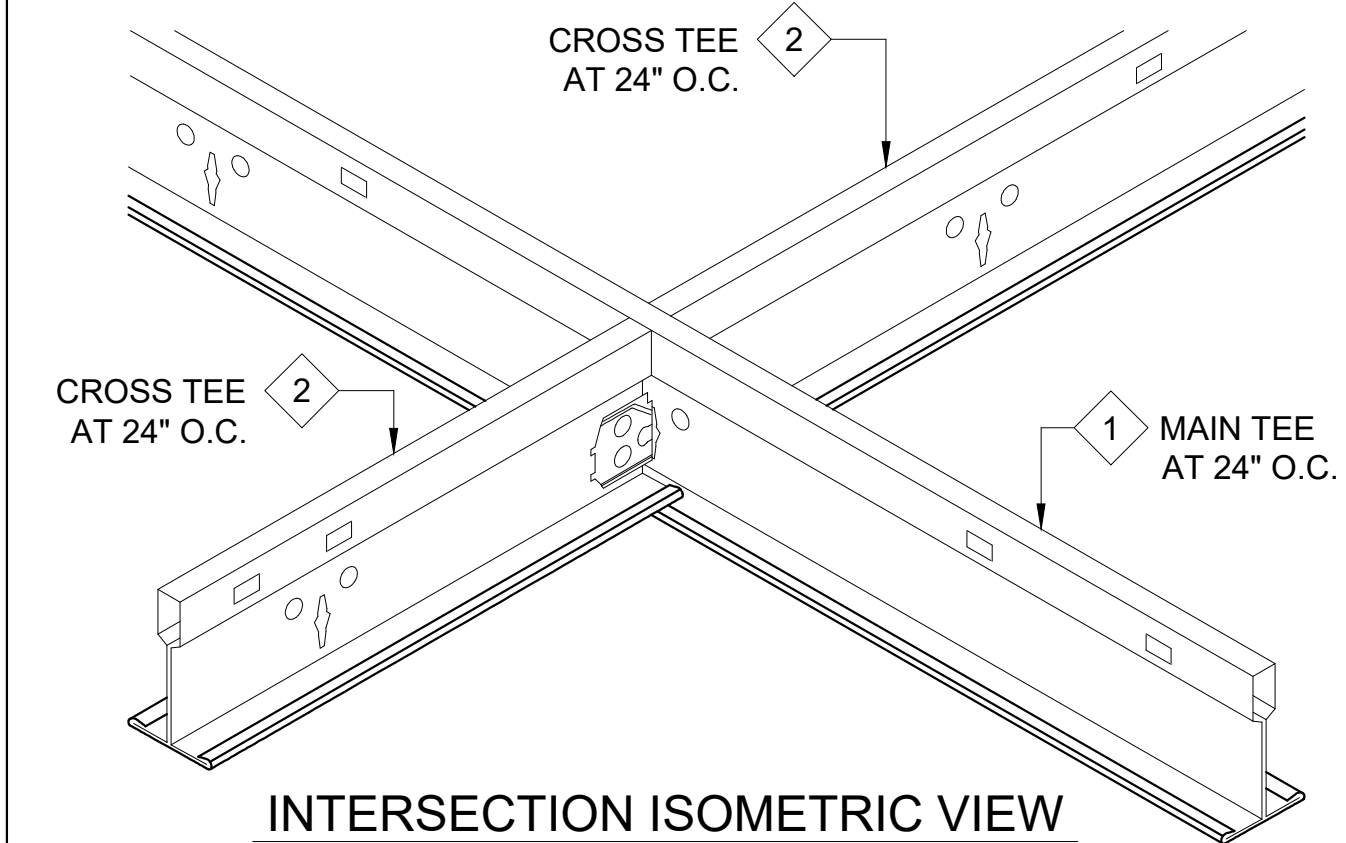
\* (1000 HRS OF CORROSION RESISTANT COATING IN ACCORDANCE WITH ASTM B117)

### MATERIAL DESIGNATIONS

MARK	DESCRIPTION
1	USG DONN BRAND™ 15/16" TEE SYSTEM - DX24 MAIN TEE (12'-0" LONG)
2	USG DONN BRAND™ 15/16" TEE SYSTEM - DX216 CROSS TEE (2'-0" LONG)
3	USG DONN BRAND™ 15/16" TEE SYSTEM - M7 MOULDING (12'-0" LONG)
4	USG DONN BRAND™ 15/16" TEE SYSTEM - MS174 SHADOWLINE (12'-0" LONG)
5	USG DONN BRAND™ 15/16" TEE SYSTEM - MS274 SHADOWLINE (10'-0" LONG)
6	USG DONN BRAND™ 15/16" TEE SYSTEM - MS20 SHADOWLINE (10'-0" LONG)
7	BEMO DT01 CEILING TILE W/ P01 PERFORATION PATTERN (24"x 24"x 1" DEEP)
8	BEMO CC01 CEILING CORNICE (3 3/4"x 5")
9	BEMO CC01C CEILING CORNICE CLEAT (FOR 3 3/4"x 5" CEILING CORNICE)
10	
11	
12	

### ISOMETRIC VIEWS

[NOTE: ISOMETRIC VIEWS ARE FOR VISUALIZATION ONLY - OBJECTS NOT TO SCALE]



BEMO CEILING TILE STANDARD DETAILS	PROJECT ADDRESS	CUSTOMER NAME	ARCHITECT NAME
------------------------------------	-----------------	---------------	----------------

DRAWN:	J. GOSS	6/15/21
CHECKED:	D. GOSS	6/15/21
PROJECT NUMBER:		
NO.	REVISION / ISSUE	DATE

DWG TITLE  
CC01 CEILING CORNICE DETAILS

SCALE 6" = 1'-0"	DWG NO. <b>D1</b>
---------------------	----------------------