

Bemo 65/500 – Straight, Tapered, Curved, Perforated, Serpentine

Dimension: 2 9/16" (65 mm) high x 19 3/4" (500 mm) wide

Specifications

Panel width:	19 3/4" (500 mm)
Variable panels:	4" (100 mm) to 26 7/8" (682 mm)
Rib:	Parallel to panel curvature, centered and straight

Anti-capillary groove: Integrated into all panels

Seam Sealant: Seam injected hot-melt Butyl

Materials:

Aluminum	.032", .040", .050"
Galvalume	24ga., 22ga., 20ga.
Copper	160Z, 200Z, 240Z

Stainless Steel 24ga, 22ga. Type: 304, 316, Duplex

Finishes:

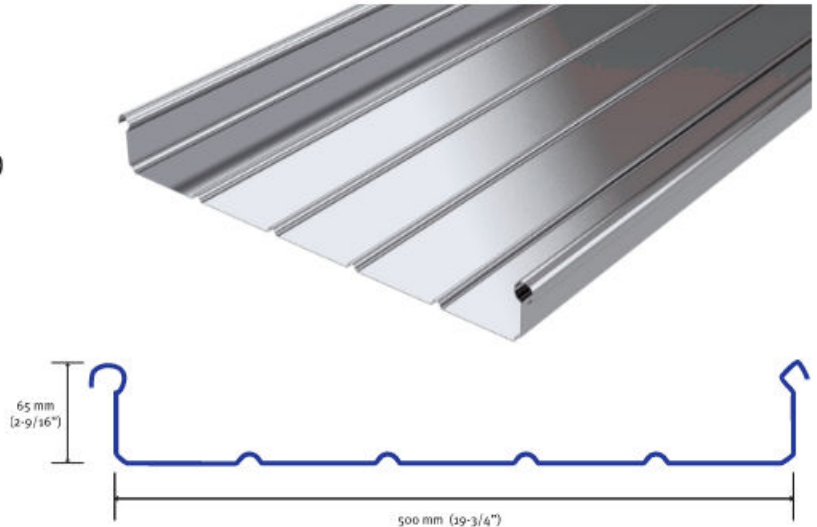
- Metal Treatments Mill, Brushed, Embossed
- PVDF Std 1.0mil, Mica, Multicoat
- Anodized Clear, Weathered, Bronze

Panel Shape and Attachment:

- Straight Convex, Concave, Serpentine
- PVDF Std 1.0mil, Mica, Multicoat
- Anodized Clear, Weathered, Bronze

Application:

- Suitable for slopes of 1/4:12 or greater
- Open framing or solid substrates
- Continuous Length roll formed panels



Excellence in Manufacturing Technology

The BEMO Mobile Mill Factories are German engineered transportable manufacturing platforms. These 20 ton mills utilize an ocean going container for roll-forming operations and would be equally at home on any manufacturing floor.

Bemo offers a broad range of fully tested roofing assemblies in a variety of metal types, gauges and finishes.

Any roof shape can be effectively and efficiently imagined with a Bemo Solution.



Bemo USA Corporation

3062 N. Maple Street, Mesa, Arizona USA 85215-1115 | 480-545-7900

visit www.bemo.com. For more information call or email at techservices@bemousa.com.

BEMO ATTACHMENT METHODS

Bemo offers several efficient and high performance attachment options. The aluminum Bemo halters are available in heights ranging from 3 ^{3/16}" /80mm up to 9 ^{7/16}" /240mm.

The Bemo Composite Thermal Halters provide an effective thermal break from the exterior of a roof to the interior.

Our exclusive sliding hook clips offer the highest performance loads in the industry. Each type of clip is designed for multiple applications.



Independently Tested and Certified Systems and Components



Underwriters Laboratories, Inc.

- ASTM E1592 Dynamic Loading
- ASTM E283 & E331 Air & Water
- ASTM E1646 & E1680 Air & Water
- 100,000 Cycle Thermal Test
- UL 580 – UL90 Certification
- UL Fire Classification “P” Assemblies (37)
- UL Class A Fire Resistance Rating
- Sound Transmission Ratings (STC)

- British, German and Singapore Standards

Dade County NOAA Certification: (-219.6psf)

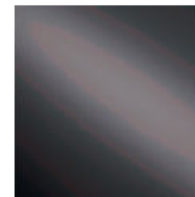
- > Dynamic Hurricane Test
- > Missile Impact Test
- > Submersion Test

Factory Mutual Global:

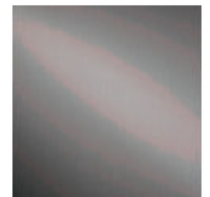
- > Windstorm Classification 4471
- > Class 1-90
- > Class 1-105
- > Class 1-120
- > Class 1-180



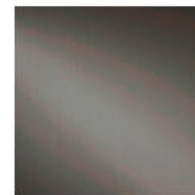
Broad Selection of Metals



Steel



Aluminum



Stainless Steel



Titanium Zinc



Copper



A606 Steel



Bemo USA Corporation

3062 N. Maple Street, Mesa, Arizona USA 85215-1115 | 480-545-7900

visit www.bemo.com. For more information call or email at techservices@bemousa.com.