

# BEMO 65/305 – Straight, Tapered, Curved, Perforated, Serpentine

Dimension: 2 9/16" (65 mm) high x 12" (305 mm) wide

## Specifications

Panel width:	12" (305 mm)
Variable panels:	4" (100 mm) to 26 7/8" (682 mm)
Rib:	Parallel to panel curvature, centered and straight

Anti-capillary groove: Integrated into all panels

Seam Sealant: Seam injected hot-melt Butyl

### Materials:

Aluminum	.032", .040", .050"
Galvalume	24ga., 22ga., 20ga., 18ga.
Copper	160Z, 200Z, 240Z, 320Z.
Stainless Steel	24ga, 22ga. Type: 304, 316, Duplex

### Finishes:

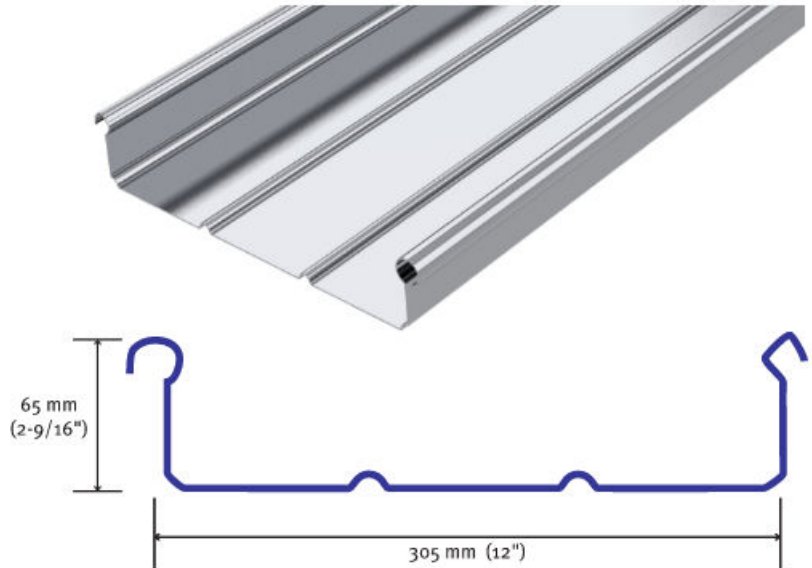
- Metal Treatments Mill, Brushed, Embossed
- PVDF Std 1.0mil, Mica, Multicoat
- Anodized Clear, Weathered, Bronze

### Panel Shape and Attachment:

- Straight Convex, Concave, Serpentine
- PVDF Std 1.0mil, Mica, Multicoat
- Anodized Clear, Weathered, Bronze

### Application:

- Suitable for slopes of 1/4:12 or greater
- Open framing or solid substrates
- Continuous Length roll formed panels

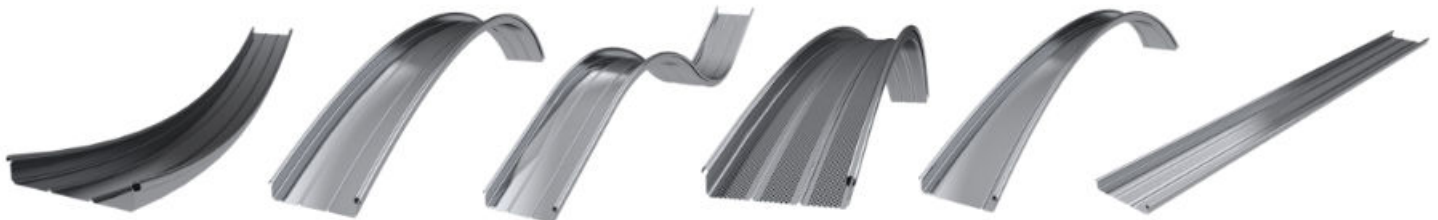


## Excellence in Manufacturing Technology

The BEMO Mobile Mill Factories are German engineered transportable manufacturing platforms. These 20 ton mills utilize an ocean going container for roll-forming operations and would be equally at home on any manufacturing floor.

Bemo offers a broad range of fully tested roofing assemblies in a variety of metal types, gauges and finishes.

Any roof shape can be effectively and efficiently imagined with a Bemo solution.



### Bemo USA Corporation

1755 N. 48th Street, Mesa, Arizona USA 85205 | 480-545-7900

visit [www.bemousa.com](http://www.bemousa.com). For more information call or email at [techservices@bemousa.com](mailto:techservices@bemousa.com).

## BEMO ATTACHMENT METHODS

Bemo offers several efficient and high performance attachment options. The aluminum Bemo halters are available in heights ranging from 3 3/16" /80mm up to 9 7/16" /240mm.

The BEMO Composite Thermal Halters provide an effective thermal break from the exterior of a roof to the interior.

Our exclusive sliding hook clips offer the highest performance loads in the industry. Each type of clip is designed for multiple applications.



## Independently Tested and Certified Systems and Components



Underwriters Laboratories, Inc.

- ASTM E1592 Dynamic Loading
- ASTM E283 & E331 Air & Water
- ASTM E1646 & E1680 Air & Water
- 100,000 Cycle Thermal Test
- UL 580 – UL90 Certification
- UL Fire Classification “P” Assemblies (37)
- UL Class A Fire Resistance Rating
- Sound Transmission Ratings (STC)

- British, German and Singapore Standards

Dade County NOAA Certification: (-219.6psf)

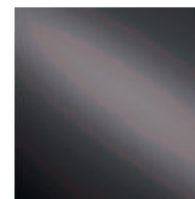
- > Dynamic Hurricane Test
- > Missile Impact Test
- > Submersion Test

Factory Mutual Global:

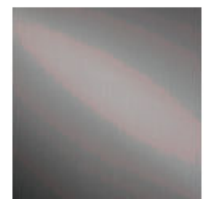
- > Windstorm Classification 4471
- > Class 1-90
- > Class 1-105
- > Class 1-120
- > Class 1-180



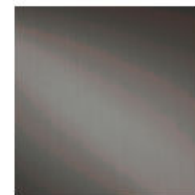
## Broad Selection of Metals



Steel



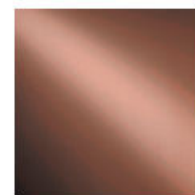
Aluminum



Stainless Steel



Titanium Zinc



Copper



A606 Steel



**Bemo USA Corporation**

1755 N. 48th Street, Mesa, Arizona USA 85205 | 480-545-7900

visit [www.bemousa.com](http://www.bemousa.com). For more information call or email at [techservices@bemousa.com](mailto:techservices@bemousa.com).