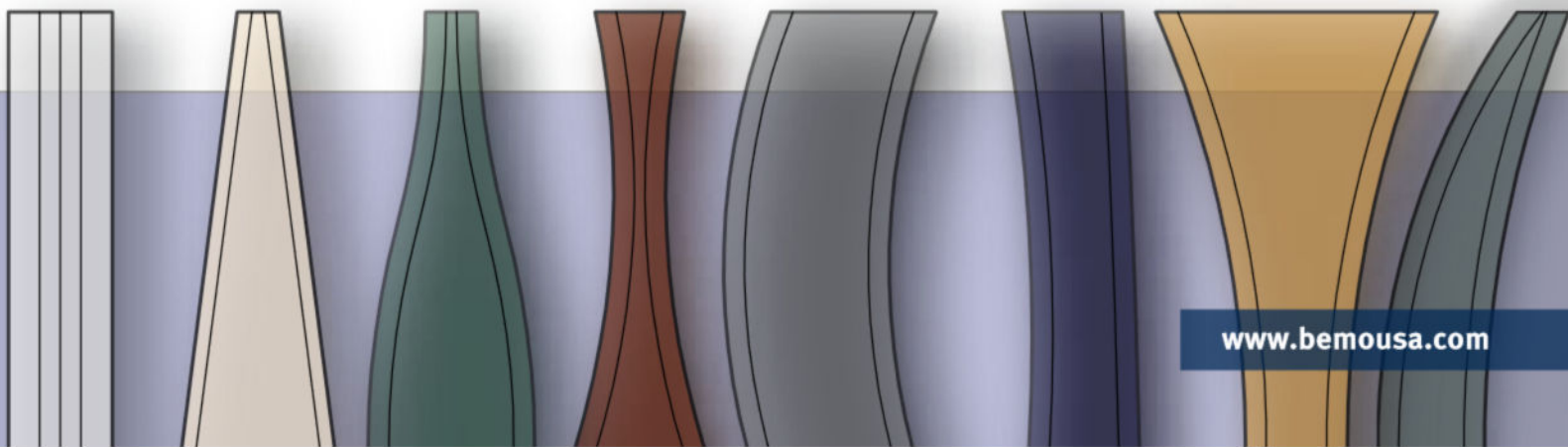


# BEMO ARCHITECTURAL COLOR GUIDE

CREATIVITY WITHOUT CONSTRAINTS  
WITH EXCEPTIONAL DURABILITY.



## STANDARD COLORS\* – CUSTOM COLORS AVAILABLE



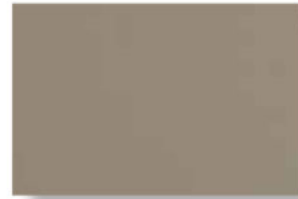
Regal White



Snowdrift White



Sandstone



Parchment



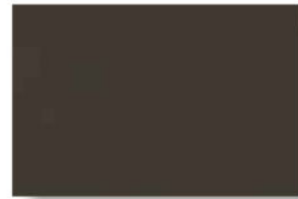
Surrey Beige



Terra-Cotta



Colonial Red



Weathered Copper



Town Gray



Old Zinc Gray



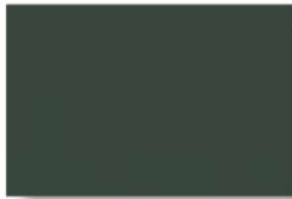
Slate Gray



Jade Green



Hemlock Green



Evergreen



Forest Green



Marine Green



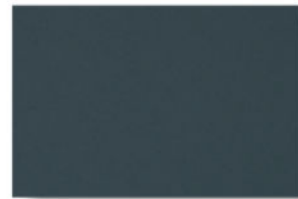
Patina Green



Slate Blue



Tahoe Blue



Regal Blue



## STANDARD PREMIUM COLORS\* - CUSTOM COLORS AVAILABLE



Silver Mica



Copper Penny



Weathered Zinc



Antique Patina

## BARE METALS, PATTERNS AND TEXTURES<sup>1</sup>



Aluminum Stucco



Bare Copper



Rusting Steel



Prewathered  
Zinc



Stainless Steel  
Finishes

**BEMO-Colors** are an exceptionally high-quality coating ideal for out-of-the-ordinary walls, low-pitch roofs and harsh climatic conditions.

**PVDF** is available as a 2-coat, 3-coat and 4-coat system. It is highly resistant to UV light and chemicals.

**BEMO-FLON**, an FEVE Resin coating, is ideal for low slope and harsh environmental conditions. It is highly resistant to UV light, can be field applied to welded conditions and is available in all finishes, from matt to high gloss.

**BEMO-EcoClean™** is a hydrophilic, durable and self-cleaning coating. When exposed to natural elements, it actively neutralizes nitrogen oxides in the atmosphere.

**BEMO-Color** coatings offer finish warranties of up to 30 years.

These are standard colors and textures. Please consult your Bemo representative for other standard and custom colors.

\*All color samples are approximate only and are not necessarily accurate due to printing process and viewing conditions. Please consult your Bemo representative for actual color samples.

<sup>1</sup>Metal colors and patterns vary due to manufacturing and environmental conditions.

# BEMO COATINGS SPECIFICATIONS

Property	Test Method	Specifications <sup>1</sup>
Dry Film Thickness (nominal)	ASTM <sup>2</sup> D 1400 ASTM D 1005	0.2 - 0.3 mil primer 0.7 - 0.85 mil topcoat
Pencil Hardness	ASTM D 3363, Eagle Turquoise	HB - H
Flexibility	T-Blend ASTM D 4145 No Cracks, No Pick-Off	2 T-Bend <sup>3</sup>
	Mandrel ASTM D 522	No Cracking <sup>3</sup>
Adhesion	ASTM D 3359 1/16" crosshatch	No Adhesion Loss
Reverse Impact	ASTM D 2794	No Cracking or Adhesion Loss <sup>3</sup>
Adhesion Resistance	ASTM D 968 To expose 5/32" diameter of metal substrate	65 ± 10 liters/mil of falling sand
Acid Pollutant Resistance	ASTM D 1308 20% sulfuric acid, 18 hours 10% muriatic acid, 30 minutes	No Effect No Effect
Salt Fog Resistance	ASTM B 117 5% salt fog @ 95°F	Passes <sup>4</sup> 1000 Hours
Humidity Resistance	ASTM D 2247, D 714 100% relative humidity @ 95°F	Passes 1500 hours
Color Retention	ASTM D 822, G 151 Atlas Weatherometer	Passes <sup>5</sup> 5000 hours
	ASTM D 2244 Florida exposure, 10 years @ 45° South	Max 5 ΔE units charge (Hunter)
Chalk Resistance	ASTM D 4214, Method A Florida exposure, 10 years @ 45° South	Maximum chalk is a rating of 8

## Notes:

- (1) Cladded Steel: 55% AL-ZN steel, extra-smooth HDG w/min. spangles.
- (2) American Society for Testing and Materials.
- (3) Excluding substrate or zinc cracking.
- (4) Less than 1/8" max. avg. creepage from scribe; none of fewer #8 blisters in the field.
- (5) No objectionable chalking, color change or adhesion loss.



## Bemo USA Corporation

Corporate Headquarters

1755 N. 48th Street  
Mesa, AZ 85205  
USA

480-545-7900  
480-545-4999 Fax

sales@bemousa.com  
techservices@bemousa.com

[www.bemousa.com](http://www.bemousa.com)

