

XSRAIL SYSTEMS FOR ROOF, WALL AND OVERHEAD

SUBMITTAL DOCUMENTATION • SALES GUIDE

RIGID RAIL SYSTEMS FOR APPLICATION ON:

- CONCRETE
- HOLLOW CONCRETE
- AND STEEL



ABOUT OUR XSRAIL SYSTEM

The XSRail system is a rigid horizontal rail system, combined with a runner, which allows users to safely work on heights. The functionality of the XSRail system can be compared with a horizontal lifeline. Both systems have their own features and advantages.

The advantage of a rail system over a lifeline system is a rail has less deflection when a fall occurs. This results in a shorter fall distance than with a lifeline system. So, for projects and situations where limited fall clearance is available, an XSRail system will be the best solution. Especially when using an automatic fall arrest device the user will be arrested almost immediately when a fall occurs.



COMPATIBILITY AND UNIQUE FEATURES

OF OUR XSRAIL SYSTEM

Our range of horizontal XSRail systems are suitable for installation on (flat/low sloped (< 5°)) concrete or rigid roofs, walls and overhead structures.

XSRail systems for roof are installed on the various roof membranes by means of our XSBase plate (art. 11110), XSBase plate PVC coated (art. 11111), XSBase plate TPO coated (art. 11112).

Other advantages are:

- ✓ Limited deflection, which requires less fall clearance;
- ✓ The XSRail can easily be integrated into the structure of a building (for example in a ceiling);
- ✓ Secures up to 6 users simultaneously on a single span;
- ✓ Configuration with relatively limited number of components, due to longer span lengths (up to 6 meter per section);
- ✓ Low maintenance; suitable for industrial and/or marine environments;
- ✓ Easy installation; the XSRail can be installed with an Allen key and a socket wrench.

CERTIFICATION

The conformity of the XSRail system has been approved by SATRA Technology Centre Ltd. (United Kingdom) according to the European Standards:

- ✓ EN 795:2012 type D – Personal fall protection equipment – Anchor devices.
- ✓ CEN/TS16415: 2013 type D – Personal fall protection equipment – Anchor devices – Recommendations for anchor devices for use by more than one person simultaneously.

The corrosion resistance of XSPlatforms' products is tested according to ISO 9227:2017.

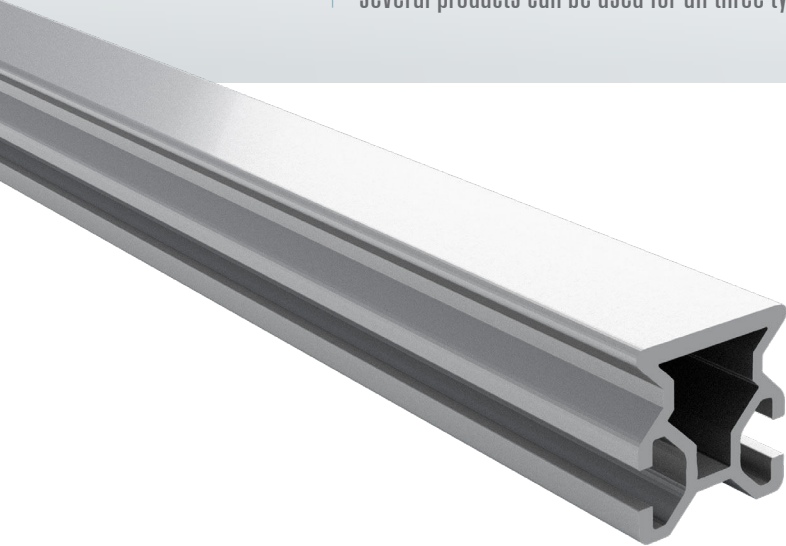
Furthermore, the XSRail system has been designed to meet the requirements of the following international standards:

- ✓ North America: ANSI Z359.1:2017, ANSI Z359.6:2016 and OSHA 1926.502.M:2011
- ✓ Canada: CSA Z259.16-15:2017
- ✓ Australia and New Zealand: AS/NZS 1891.2:2001 and AS/NZS 1891.3:2020.

COMPONENTS

OF AN XSRAIL SYSTEM

Like most XSPlatforms fall protections systems the XSRail system is built up out of modular components. Meaning that several products can be used for all three types of installation: roof, wall and overhead.



XSRAIL (2, 4 & 6 m)

Art. 60002 / 60004 / 60006

XSRail is available in three different lengths, for the convenience of the calculator when configuring a system. At all times, the maximum span (distance between two anchors) is 6 meter (19'8").

This type of rail profile is designed for horizontal use.

PLEASE NOTE for rope access installation, the maximum span between supports needs to be 1.5 meters (4'11"). A rope access system can be used by two users on every other span.

XSRAIL CORNERS FOR ROOF/OVERHEAD

Art. 60045 / 60090

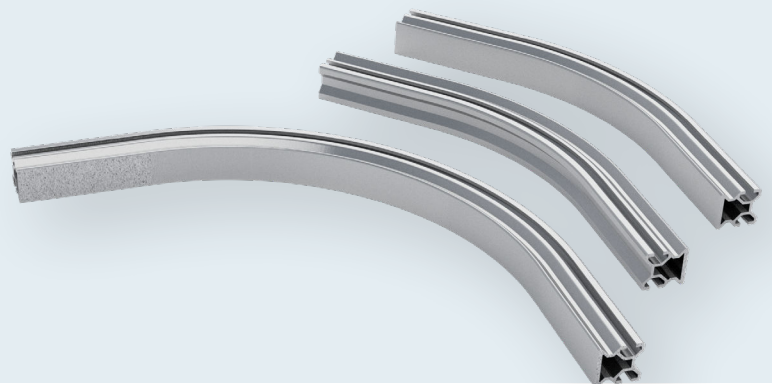
A series of modular 45 and 90 degree corners, which can be mounted on a roof or overhead structure.

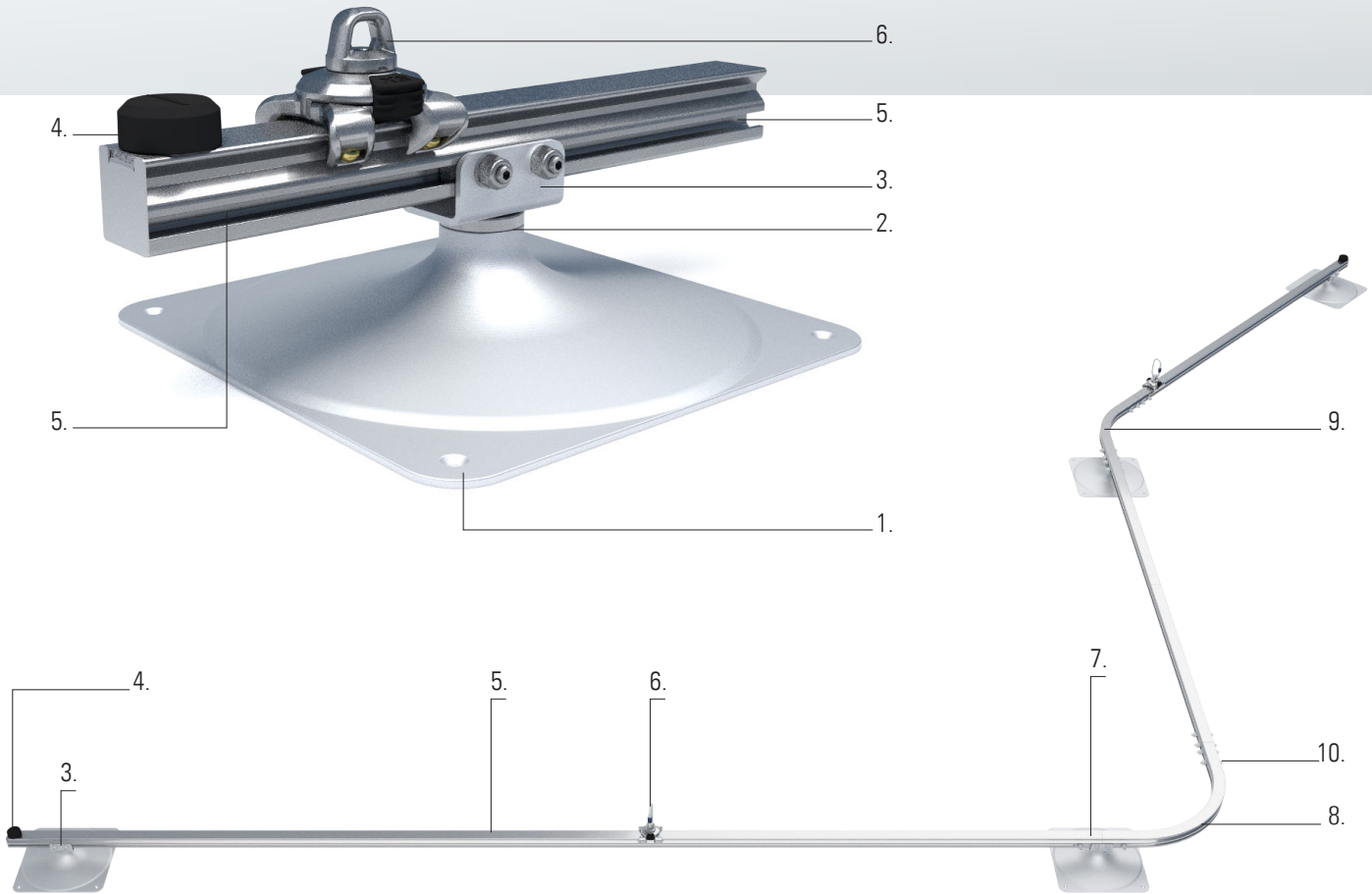


XSRAIL CORNERS FOR WALL

Art. 60145 / 60146 / 60190

To be able to follow different wall shapes with the XSRail system, a series of wall corners has been developed that can be installed on both inner and outer corners.





EXAMPLE OF A SYSTEM CONFIGURATION (ON A ROOF)

- | | |
|-----------------------------------------------|------------------------------------------|
| 1. XSBASE plate (art. 11110) | 6. XSRail runner (art. 60300) |
| 2. XSRail connector (art. 60220) | 7. XSRail link support roof (art. 60211) |
| 3. XSRail start/end support roof (art. 60210) | 8. XSRail 90° roof/overhead (art. 60090) |
| 4. XSRail stop (art. 60240) | 9. XSRail 45° roof/overhead (art. 60045) |
| 5. XSRail (art. 60002/60004/60006) | 10. XSRail link (art. 60230) |



XSRAIL COMPONENTS

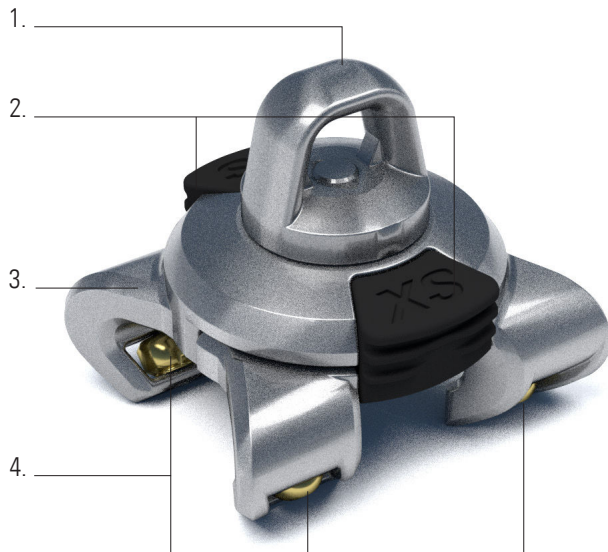
XSRAIL RUNNER

Art. 60300

The specially designed XSRail runner is a detachable slider that can be attached to the XSRail at any point of the rail. It allows a user to move along the rail trajectory. Its unique shape and design enables smooth passage over XSRail support brackets without having to disconnect from the XSRail.

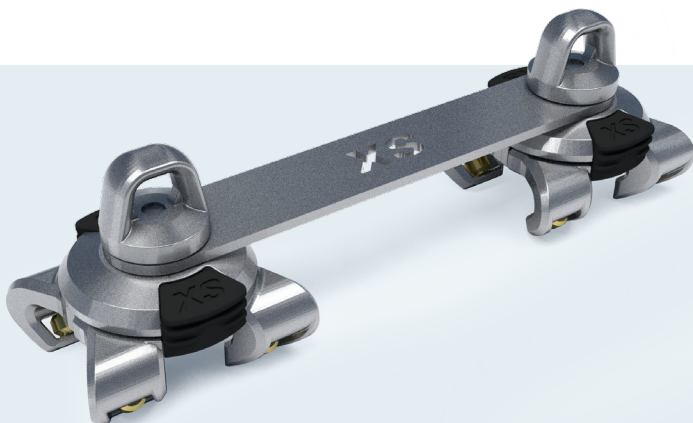
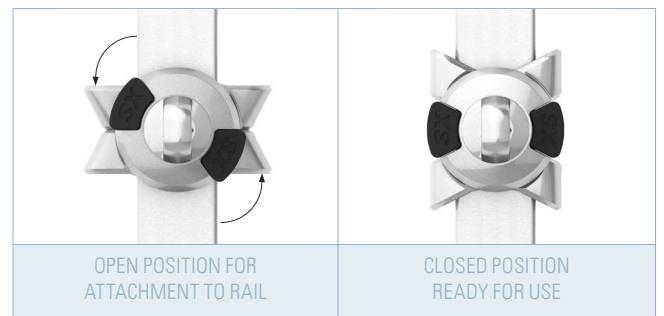
Due to its rotating (360°) anchorage point on top, the user is given a maximum range of freedom when moving around the system.

The locking system of this runner eliminates any possibility of unintentional detachment during the use of the XSRail system.



FEATURES:

1. **Rotating anchor point/safety eye (360°)** for attachment of a lanyard or retractable fall arrest device.
2. **Locking mechanism** — pull the locks upwards and push the runner legs together to open the slider. When released, the legs will rotate back to the locked/closed position.
3. **Marine grade** AISI 316 components.
4. **Additional wheels** allow the slider to move smoothly over the XSRail, providing maximum comfort to the user.



XSRAIL RUNNER ROPE ACCESS

Art. 60311

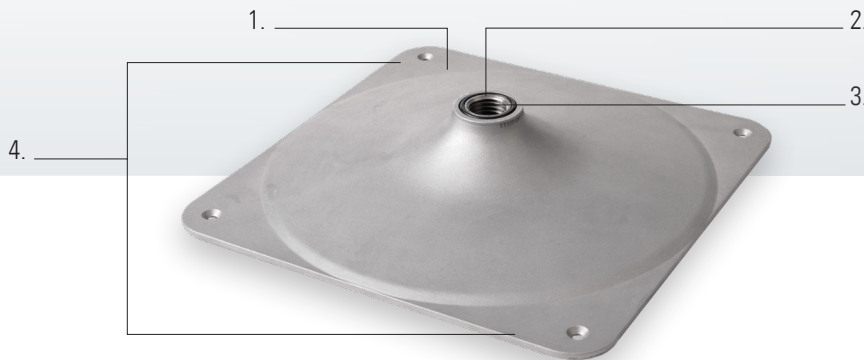
The XSRail runner rope access allows for rope access (abseil) work along an XSRail system. The runner consists of two removable sliders that are joined together with a centerpiece. The detachable slider can be attached to the XSRail at any point in the trajectory. The unique locking mechanism eliminates incorrect use of the runner on the XSRail.

XSRAIL SYSTEM

FOR ROOF

FEATURES OF THE XSBASE PLATE

1. Aluminum plate.
2. M30 top thread for compatibility with XSRail connector and XSRail (corner) support.
3. Installable with only one anchor, for quick installation and minimum roof penetration.
4. The base design makes the XSBase plate strong and durable.
5. The base is also available with PVC or TPO coating.



5. XSBase plate PVC coated

XSRAIL CONNECTOR

Art. 60220

The XSRail connector with M30 thread is screwed directly into the XSBase plate. It serves as an adaptor between the XSBase plate and the XSRail start/end support and the XSRail link support.



XSRAIL STOP

Art. 60240

This component functions as an end point for the XSRail system and prevents the XSRail runner from running off at the end of the XSRail system. The XSRail stop must be installed as a terminator at all ends of a XSRail system.



XSRAIL START/END SUPPORT

Art. 60210

The XSRail start/end support is used to connect the XSRail with the XSBase plate. It is the first XSRail support type at the start/end of a trajectory. The XSRail profiles slide into the support and are locked in place with four M10 Hexagon socket set screws with cone point (DIN 914).



XSRAIL LINK

Art. 60230

A XSRail corner always starts or ends with a XSRail link support. The installation can be continued with the XSRail link (art. 60230) on the other corner end. Depending on the situation, the XSRail link can also be used to extend XSRail spans up till one meter from the next XSRail link support or XSRail support.



XSRAIL LINK SUPPORT

Art. 60211

To link a span of XSRail together either a XSRail link or XSRail Link support can be used. On roof installations the XSRail link support must be used at least on one corner end.



PLEASE NOTE: For the conditions of the use of XSRail Link support, Support and Link we recommend to look into the design rules. These can be found in the XSRail Quick guide for roof. This can be found on the XSPlatforms partner portal.

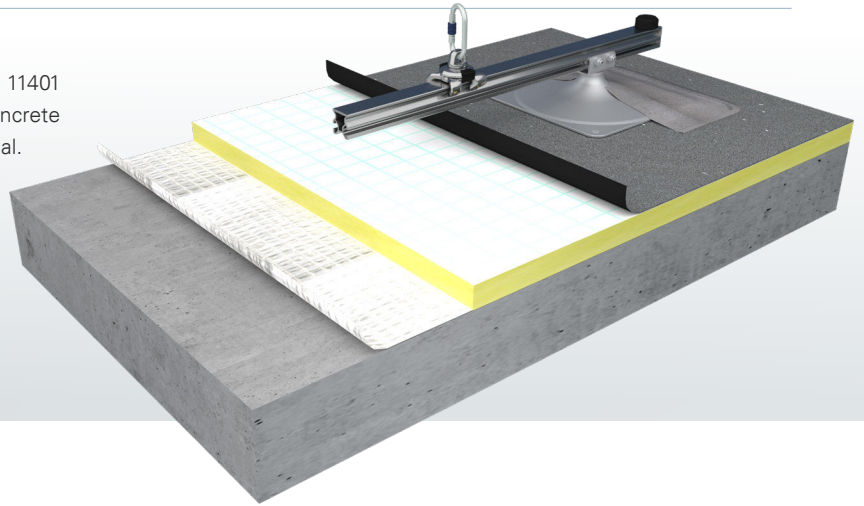
XSRail SYSTEM FOR ROOF

CONCRETE ROOF STRUCTURES

By means of an XSBase plate and XSMEchanical anchor (art. 11401 or 11403), the XSRail system is suitable for installation on concrete roof structures with for example a bituminous roofing material.

Requirements for installation on concrete:

- Min. thickness: 140 mm (5 1/2")
- Min. quality: reinforced C20/25



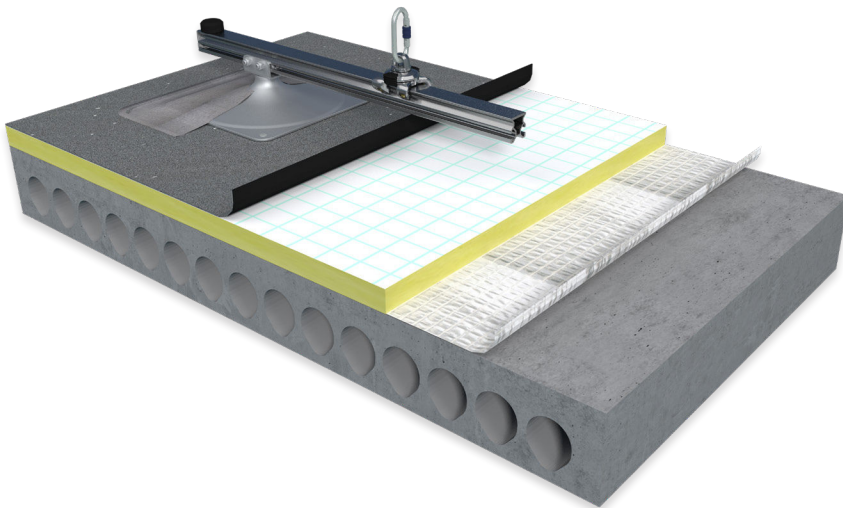
HOLLOW CONCRETE ROOF STRUCTURES

By means of an XSBase plate (PVC coated) and XSMEchanical anchor (art. 11401 or 11403), the XSRail system is suitable for installation on hollow concrete roof structures with for example a PVC roofing material.

Requirements for installation on hollow concrete:

- Min. thickness: 35 mm (1 3/8")
- Min. quality: reinforced C20/25

PLEASE NOTE that the XSRail system may only be installed on flat roofs or roofs with a maximum roof pitch of 15° measured from the horizontal.



XSRail SYSTEM

FOR WALL AND OVERHEAD

STEEL OR CONCRETE STRUCTURES

XSRail can be installed on both walls and overhead structures. Different installation requirements apply for these setups to attach the XSRail start/end supports and XSRail link supports.



For steel structures, the XSRail supports should be installed directly on the surface using a bolt and nut connection (M12).



For concrete structures, the XSRail supports should be installed directly on the surface using a Fischer Safety anchor with an M12 bolt.

(HOLLOW) CONCRETE WALLS OR CEILINGS

The XSRail system is suitable for direct installation on a (hollow) concrete wall or ceiling structure. For this installation the XSRail Start/end support or Link support is required for installation. These supports are installed by means of a Fischer Safety anchor.

Requirements for installation on regular concrete:

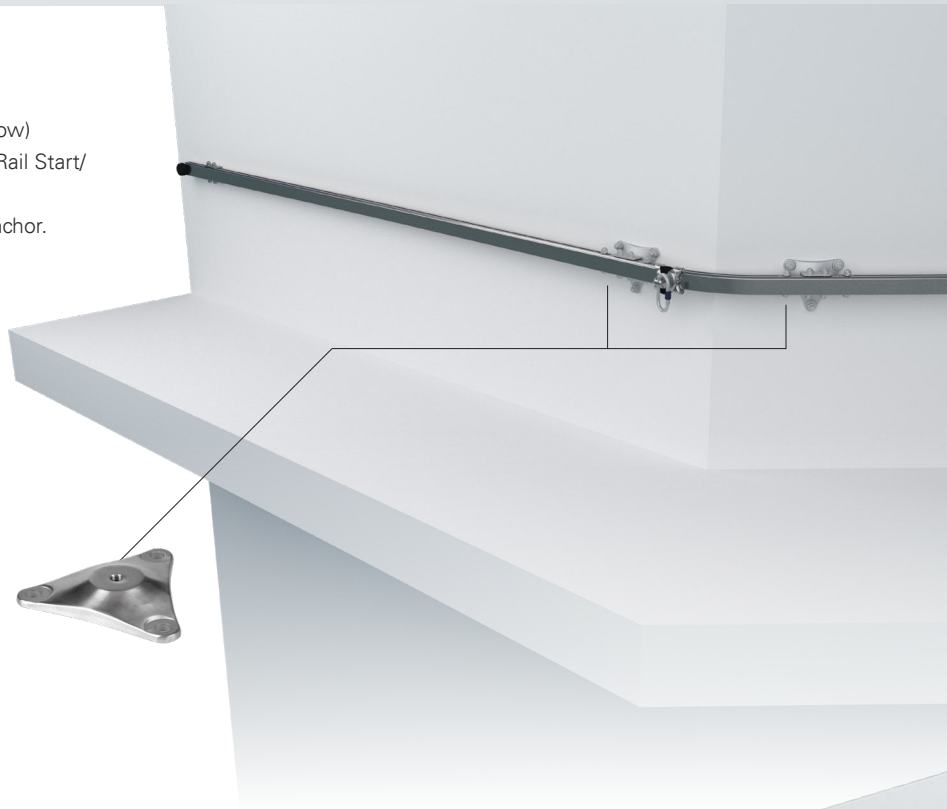
- Min. thickness: 140 mm (5 1/2")
- Min. quality: reinforced C20/25

Requirements for installation on hollow concrete:

- Min. thickness: 35 mm (1 3/8")
- Min. quality: reinforced C20/25

PLEASE NOTE that the XSRail Base plate on wall installation on locations with an outer corner of 45°. The installation requires 3 XSMEchanical anchor (art. 11401).

For further design rules we refer to the XSRail Quickguide for wall structures.

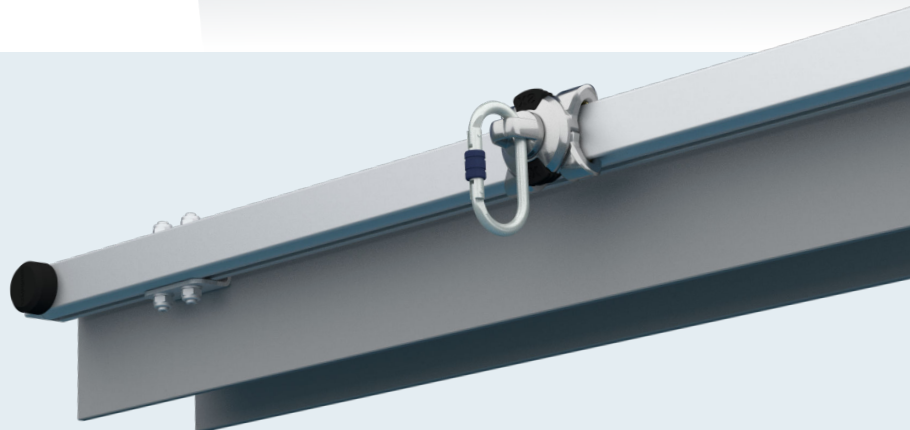


STEEL RIGID STRUCTURES

An XSRail system can be installed directly onto steel rigid structures, such as steel I-beams.

Requirements for installation on steel rigid structures:

- Min. thickness: 4 mm (3/16")
- Min. quality: S235



XSRAIL SYSTEMS FOR ROOF, WALL AND OVERHEAD

SUBMITTAL DOCUMENTATION • TECHNICAL SPECIFICATION SHEETS

RIGID RAIL SYSTEMS FOR APPLICATION ON:

- > CONCRETE
- > HOLLOW CONCRETE
- > AND STEEL

SUPERIOR SOLUTIONS
FOR WORK AT ANY HEIGHT

BEMOUSA.COM



XSPlatforms®
Certified Partner

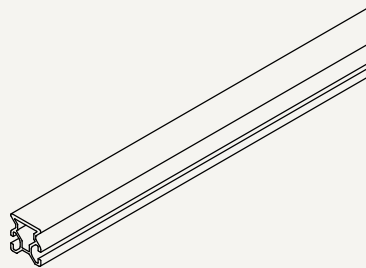
Art.: XSRail 2 m (2 m / 6.5 ft)

Version: No.2 - 19/9/2023

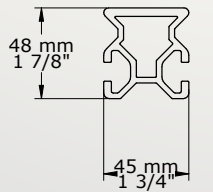
Art. no. : 60002

Description

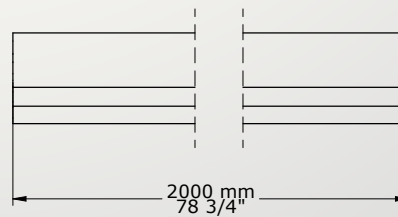
The XSRail is an aluminum rigid anchor line, which provides safe anchorage for workers on top of flat or low-sloping roofs (max. 5°), alongside walls or via overhead constructions.



ISOMETRIC VIEW



FRONT VIEW



SIDE VIEW

COMPONENT SPECIFICATIONS

Art. no.	Material	Dimensions mm (inch)	Weight in kg (lbs)
60002	Anodised aluminum	2000x45x48 mm (78 3/4" x 1 3/4" x 1 7/8")	3,9 kg (8.5 lbs)

COMPATIBILITY & WARNINGS

- XSRail can be installed on roofs, walls and ceilings with the use of different XSRail supports. The XSRail link set (60230) is designed to join two sections of the XSRail together and the XSRail stop (60240) prevents the XSRail runner (horizontal) (60300) from running off the ends of the rail.
- The XSRail system is only compatible with the XSRail runner (horizontal) (60300).
- The XSRail system can be used by a maximum of 6 users on a single span simultaneously.

Standards and requirements

XSPlatforms guardrail systems are designed to meet the requirements for temporary and permanent edge protection systems:

- EN 795:2012 type D, CEN/TS 16415:2013 type D
- ANSI Z359 (Fall Protection Code), OSHA 1926.502.M:2011 (North America)
- CSA Z259.16-15:2017 (Canada)
- AS/NZS 1891.2:2001 (Australia and New Zealand)

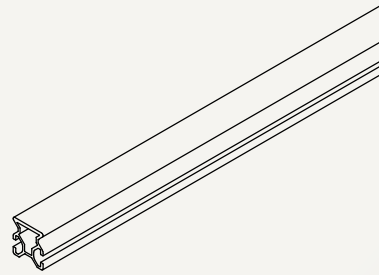
Art.: XSRail 4 m (4 m / 13 ft)

Version: No.2 - 19/9/2023

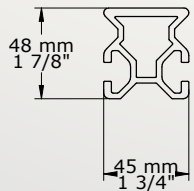
Art. no. : 60004

Description

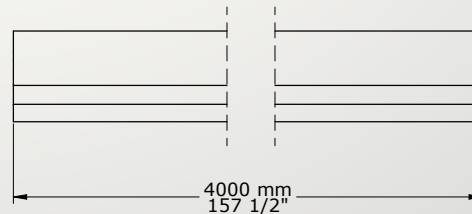
The XSRail is an aluminum rigid anchor line, which provides safe anchorage for workers on top of flat or low-sloping roofs (max. 5°), alongside walls or via overhead constructions.



ISOMETRIC VIEW



FRONT VIEW



SIDE VIEW

COMPONENT SPECIFICATIONS

Art. no.	Material	Dimensions mm (inch)	Weight in kg (lbs)
60004	Anodised aluminum	4000x45x48 mm (157 1/2"x1 3/4"x1 7/8")	7,8 kg (17.2 lbs)

COMPATIBILITY & WARNINGS

- XSRail can be installed on roofs, walls and ceilings with the use of different XSRail supports. The XSRail link set (60230) is designed to join two sections of the XSRail together and the XSRail stop (60240) prevents the XSRail runner (horizontal) (60300) from running off the ends of the rail.
- The XSRail system is only compatible with the XSRail runner (horizontal) (60300).
- The XSRail system can be used by a maximum of 6 users on a single span simultaneously.

Standards and requirements

XSPatforms guardrail systems are designed to meet the requirements for temporary and permanent edge protection systems:

- EN 795:2012 type D, CEN/TS 16415:2013 type D
- ANSI Z359 (Fall Protection Code), OSHA 1926.502.M:2011 (North America)
- CSA Z259.16-15:2017 (Canada)
- AS/NZS 1891.2:2001 (Australia and New Zealand)

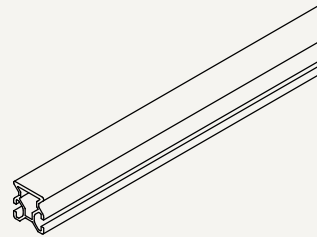
Art.: XSRail 6 m (6 m / 19.5 ft)

Version: No.2 - 19/9/2023

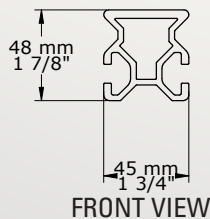
Art. no. : 60006

Description

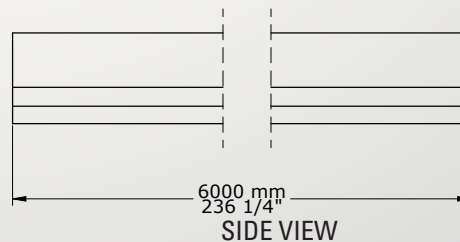
The XSRail is an aluminum rigid anchor line, which provides safe anchorage for workers on top of flat or low-sloping roofs (max. 5°), alongside walls or via overhead constructions.



ISOMETRIC VIEW



FRONT VIEW



SIDE VIEW

COMPONENT SPECIFICATIONS

Art. no.	Material	Dimensions mm (inch)	Weight in kg (lbs)
60006	Anodised aluminum	6000x45x48 mm (236 1/4"x1 3/4"x1 7/8")	12 kg (26.4 lbs)

COMPATIBILITY & WARNINGS

- XSRail can be installed on roofs, walls and ceilings with the use of different XSRail supports. The XSRail link set (60230) is designed to join two sections of the XSRail together and the XSRail stop (60240) prevents the XSRail runner (horizontal) (60300) from running off the ends of the rail.
- The XSRail system is only compatible with the XSRail runner (horizontal) (60300).
- The XSRail system can be used by a maximum of 6 users on a single span simultaneously.

Standards and requirements

XSPlatforms guardrail systems are designed to meet the requirements for temporary and permanent edge protection systems:

- EN 795:2012 type D, CEN/TS 16415:2013 type D
- ANSI Z359 (Fall Protection Code), OSHA 1926.502.M:2011 (North America)
- CSA Z259.16-15:2017 (Canada)
- AS/NZS 1891.2:2001 (Australia and New Zealand)

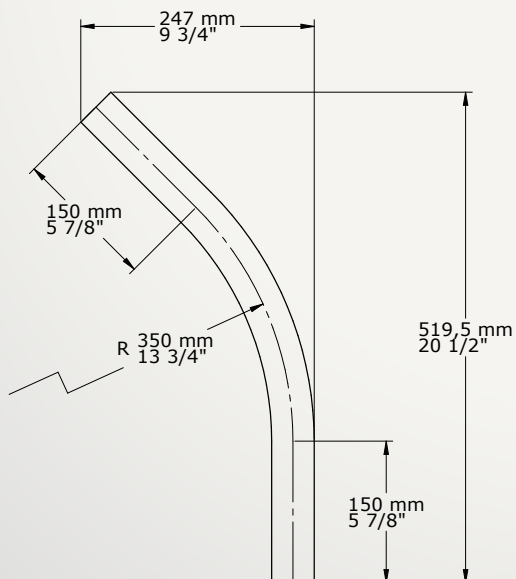
Art.: XSRail 45° roof/overhead

Version: No.2 - 19/9/2023

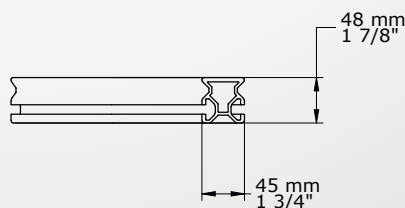
Art. no. : 60045

Description

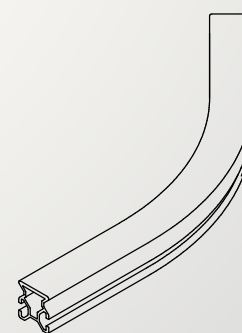
The XSRail 45° roof/overhead is part of the XSRail system. It can be used in both a roof as well as overhead systems to create a 45° corner. The corner component is always used in combination with two XSRail link supports.



TOP VIEW



SIDE VIEW



ISOMETRIC VIEW

COMPONENT SPECIFICATIONS

Art. no.	Material	Dimensions mm (inch)	Weight in kg (lbs)
60045	Anodised aluminum	520x247x48 mm (20 1/2"x9 3/4"x1 7/8")	1,1 kg (2.4 lbs)

COMPATIBILITY & WARNINGS

1. The XSRail 45° roof/overhead can be installed on concrete or steel roof and overhead structures by means of XSRail link supports.
2. The XSRail link set (60230) is designed to join two sections of the XSRail together and the XSRail stop (60240) blocks the travel of the XSRail runner at the ends of the rail.
3. The XSRail system is only compatible with the XSRail runner (horizontal) (60300).
4. The XSRail system can be used by a maximum of 6 users on a single span simultaneously.

Standards and requirements

XSPlatforms guardrail systems are designed to meet the requirements for temporary and permanent edge protection systems:

1. EN 795:2012 type D, CEN/TS 16415:2013 type D
2. ANSI Z359 (Fall Protection Code), OSHA 1926.502.M:2011 (North America)
3. CSA Z259.16-15:2017 (Canada)
4. AS/NZS 1891.2:2001 (Australia and New Zealand)

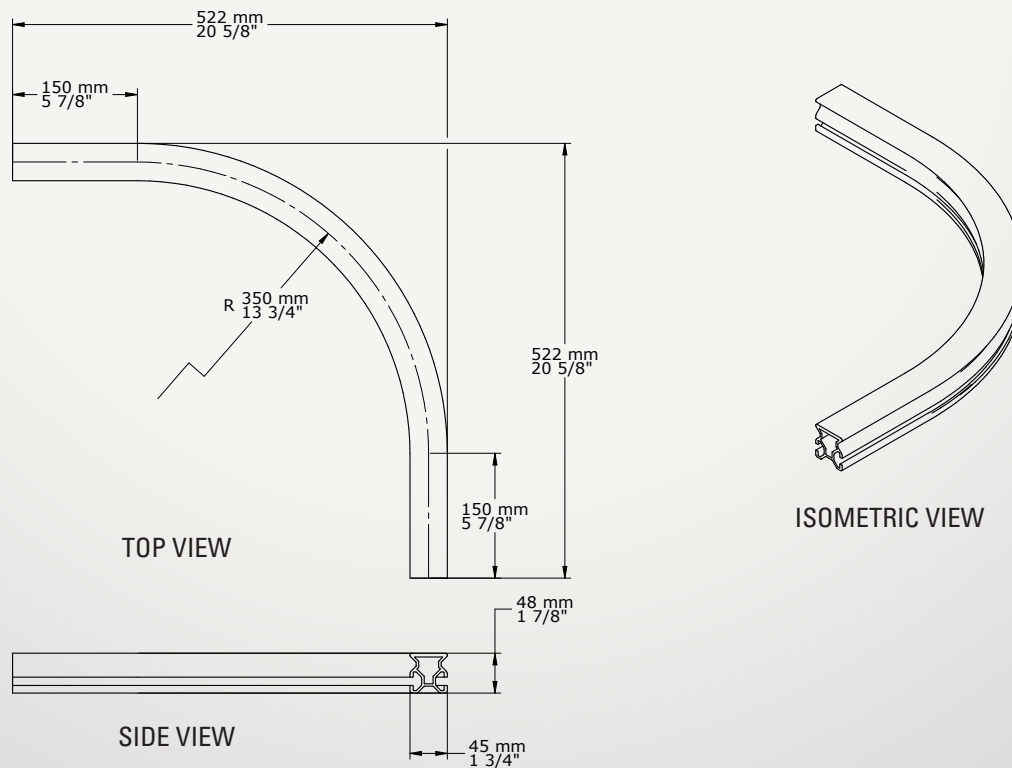
Art.: XSRail 90° roof/overhead

Version: No.2 - 19/9/2023

Art. no. : 60090

Description

The XSRail 90° roof/overhead is part of the XSRail system. It can be used in both a roof as well as overhead systems to create a 90° corner. The corner component is always used in combination with two XSRail link supports.



COMPONENT SPECIFICATIONS

Art. no.	Material	Dimensions mm (inch)	Weight in kg (lbs)
60090	Anodised aluminum	522x522x48 mm (20 5/8"x20 5/8"x1 7/8")	1,5 kg (3.26 lbs)

COMPATIBILITY & WARNINGS

1. The XSRail 90° roof/overhead can be installed on concrete or steel roof and overhead structures by means of XSRail link supports.
2. The XSRail link set (60230) is designed to join two sections of the XSRail together and the XSRail stop (60240) blocks the travel of the XSRail runner at the ends of the rail.
3. The XSRail system is only compatible with the XSRail runner (horizontal) (60300).
4. The XSRail system can be used by a maximum of 6 users on a single span simultaneously.

Standards and requirements

XSPlatforms guardrail systems are designed to meet the requirements for temporary and permanent edge protection systems:

1. EN 795:2012 type D, CEN/TS 16415:2013 type D
2. ANSI Z359 (Fall Protection Code), OSHA 1926.502.M:2011 (North America)
3. CSA Z259.16-15:2017 (Canada)
4. AS/NZS 1891.2:2001 (Australia and New Zealand)

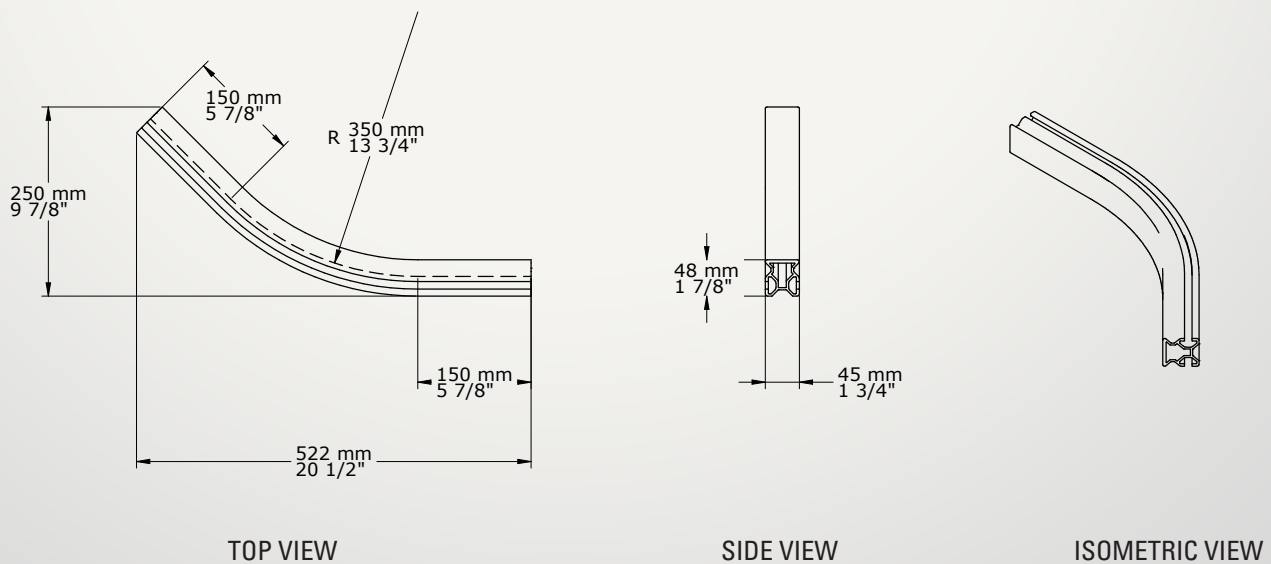
Art.: XSRail 45° (inner) wall

Version: No.2 - 19/9/2023

Art. no. : 60145

Description

The XSRail 45° (inner) wall is part of the XSRail system and can be used in a wall mounted system to create a 45° inner corner. The corner component is always used in combination with two XSRail link supports.



COMPONENT SPECIFICATIONS

Art. no.	Material	Dimensions mm (inch)	Weight in kg (lbs)
60145	Anodised aluminum	522x250x48 mm (20 1/2"x9 7/8"x1 7/8")	1,1 kg (2.4 lbs)

COMPATIBILITY & WARNINGS

1. The XSRail 45° (inner) wall can be installed on concrete or steel roof and overhead structures by means of XSRail link supports.
2. The XSRail link set (60230) is designed to join two sections of the XSRail together and the XSRail stop (60240) blocks the travel of the XSRail runner at the ends of the rail.
3. The XSRail system is only compatible with the XSRail runner (horizontal) (60300).
4. The XSRail system can be used by a maximum of 6 users on a single span simultaneously.

Standards and requirements

XSPlatforms guardrail systems are designed to meet the requirements for temporary and permanent edge protection systems:

1. EN 795:2012 type D, CEN/TS 16415:2013 type D
2. ANSI Z359 (Fall Protection Code), OSHA 1926.502.M:2011 (North America)
3. CSA Z259.16-15:2017 (Canada)
4. AS/NZS 1891.2:2001 (Australia and New Zealand)

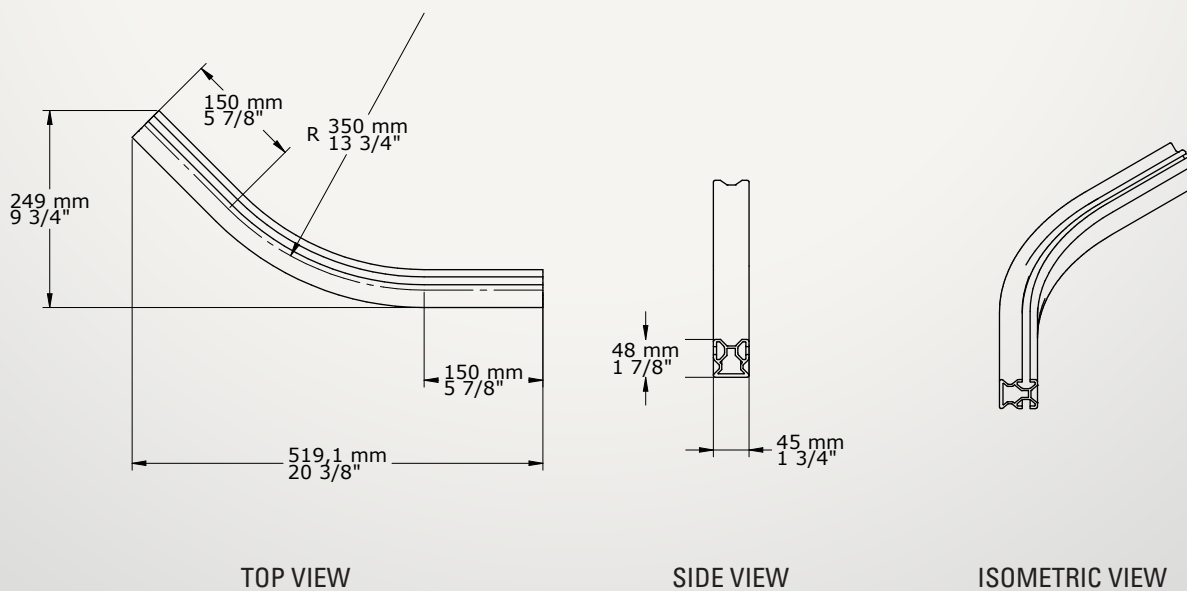
Art.: XSRail 45° (outer) wall

Version: No.2 - 19/9/2023

Art. no. : 60146

Description

The XSRail 45° (outer) wall is part of the XSRail system and can be used in a wall mounted system to create a 45° outer corner. The corner component is always used in combination with two XSBase plate wall/overhead and XSRail corner supports.



COMPONENT SPECIFICATIONS

Art. no.	Material	Dimensions mm (inch)	Weight in kg (lbs)
60146	Anodised aluminum	519x249x48 mm (20 3/8"x9 3/8"x1 7/8")	1,1 kg (2.4 lbs)

COMPATIBILITY & WARNINGS

1. The XSRail 45° (outer) wall can be installed on various wall structures by means of XSRail corner supports.
2. The XSRail link set (60230) is designed to join two sections of the XSRail together and the XSRail stop (60240) blocks the travel of the XSRail runner at the ends of the rail.
3. The XSRail system is only compatible with the XSRail runner (horizontal) (60300).
4. The XSRail system can be used by a maximum of 6 users on a single span simultaneously.

Standards and requirements

XSPlatforms guardrail systems are designed to meet the requirements for temporary and permanent edge protection systems:

1. EN 795:2012 type D, CEN/TS 16415:2013 type D
2. ANSI Z359 (Fall Protection Code), OSHA 1926.502.M:2011 (North America)
3. CSA Z259.16-15:2017 (Canada)
4. AS/NZS 1891.2:2001 (Australia and New Zealand)

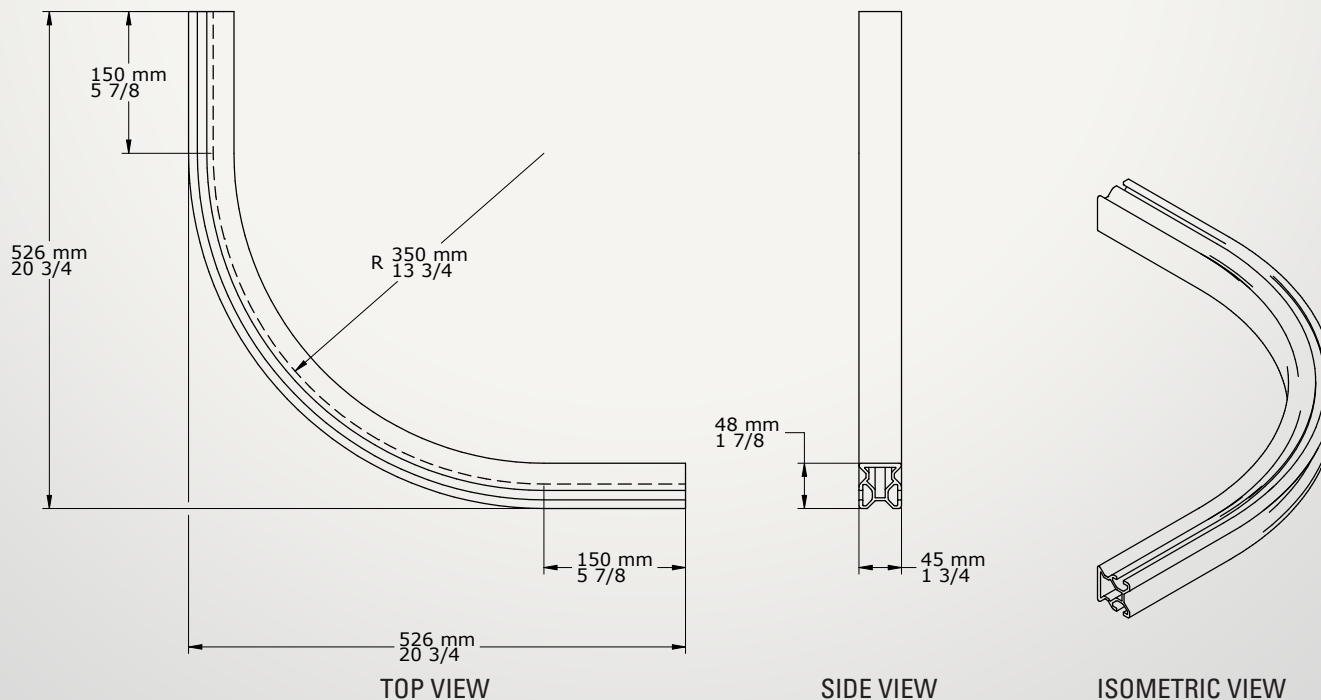
Art.: XSRail 90° (inner) wall

Version: No.2 - 19/9/2023

Art. no. : 60190

Description

The XSRail 90° (inner) wall is part of the XSRail system and can be used in a wall mounted system to create a 90° inner corner. The corner component is always used in combination with two XSRail link supports.



COMPONENT SPECIFICATIONS

Art. no.	Material	Dimensions mm (inch)	Weight in kg (lbs)
60190	Anodised aluminum	526x252x48 mm (20 3/4"x20 3/4"x1 7/8")	1,7 kg (3.7 lbs)

COMPATIBILITY & WARNINGS

1. The XSRail 90° (inner) wall can be installed on concrete or steel roof and overhead structures by means of XSRail link supports.
2. The XSRail link set (60230) is designed to join two sections of the XSRail together and the XSRail stop (60240) blocks the travel of the XSRail runner at the ends of the rail.
3. The XSRail system is only compatible with the XSRail runner (horizontal) (60300).
4. The XSRail system can be used by a maximum of 6 users on a single span simultaneously.

Standards and requirements

XSPlatforms guardrail systems are designed to meet the requirements for temporary and permanent edge protection systems:

1. EN 795:2012 type D, CEN/TS 16415:2013 type D
2. ANSI Z359 (Fall Protection Code), OSHA 1926.502.M:2011 (North America)
3. CSA Z259.16-15:2017 (Canada)
4. AS/NZS 1891.2:2001 (Australia and New Zealand)

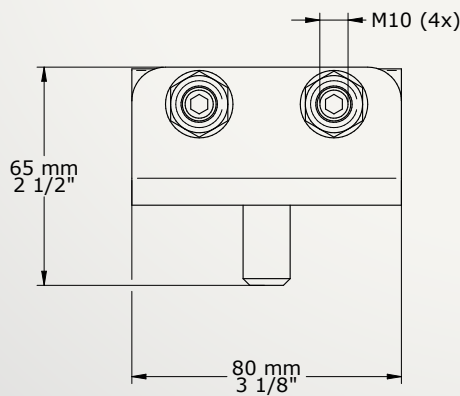
Art.: XSRail start/end support roof

Version: No.2 - 19/9/2023

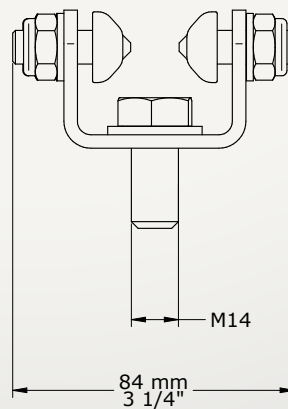
Art. no. : 60210

Description

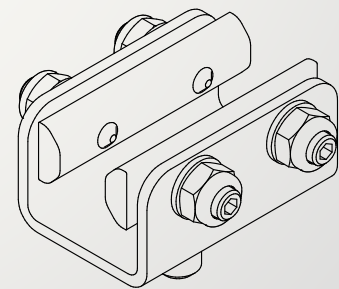
The XSRail start/end support roof forms the connection between the XSRail and the XSRail connector on the XSBase plate (11110, 11111, 11112)



TOP VIEW



SIDE VIEW



ISOMETRIC VIEW

COMPONENT SPECIFICATIONS

Art. no.	Material	Dimensions mm (inch)	Weight in kg (lbs)
60210	AISI 316	80x84x65 mm (3 1/8"x3 1/8"x2 1/2")	0,7 kg (1.6 lbs)

COMPATIBILITY & WARNINGS

1. The XSRail start/end support roof is designed to be used in combination with the XSRail (60002, 60004 & 60006).
2. The XSRail start/end support roof can be installed on an XSRail connector mounted on a XSBase plate.

Standards and requirements

XSPlatforms guardrail systems are designed to meet the requirements for temporary and permanent edge protection systems:

1. EN 795:2012 type D, CEN/TS 16415:2013 type D
2. ANSI Z359 (Fall Protection Code), OSHA 1926.502.M:2011 (North America)
3. CSA Z259.16-15:2017 (Canada)
4. AS/NZS 1891.2:2001 (Australia and New Zealand)

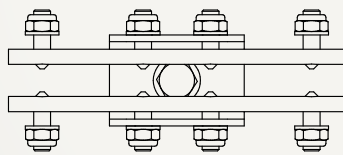
Art.: XSRail link support roof

Version: No.2 - 19/9/2023

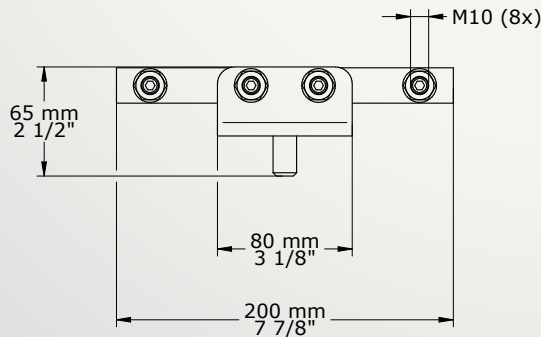
Art. no. : 60211

Description

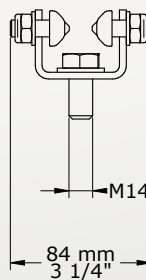
The XSRail corner support forms the connection between the XSRail (corner) and roof or wall/overhead base plate. The XSRail corner support should only be used in combination with the XSRail corners. The XSRail (corner) is mounted on the corner support by means of eight M10 Hexagon socket set screws (DIN 914), four on each side.



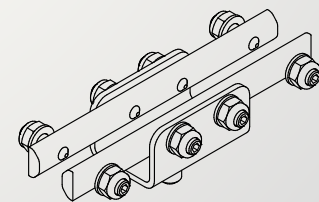
TOP VIEW



FRONT VIEW



SIDE VIEW



ISOMETRIC VIEW

COMPONENT SPECIFICATIONS

Art. no.	Material	Dimensions mm (inch)	Weight in kg (lbs)
60211	AISI 316	200x84x65 mm (7 7/8"x3 1/4"x2 1/2")	1,14 kg (2.5 lbs)

COMPATIBILITY & WARNINGS

1. The XSRail link support roof is designed to be used in combination with the XSRail (60002, 60004 & 60006) and all XSRail roof corners.
2. The XSRail link support roof should be installed on an XSRail connector (60220) mounted on a XSBase plate (11110, 11111, 11112).

Standards and requirements

XSPlatforms guardrail systems are designed to meet the requirements for temporary and permanent edge protection systems:

1. EN 795:2012 type D, CEN/TS 16415:2013 type D
2. ANSI Z359 (Fall Protection Code), OSHA 1926.502.M:2011 (North America)
3. CSA Z259.16-15:2017 (Canada)
4. AS/NZS 1891.2:2001 (Australia and New Zealand)

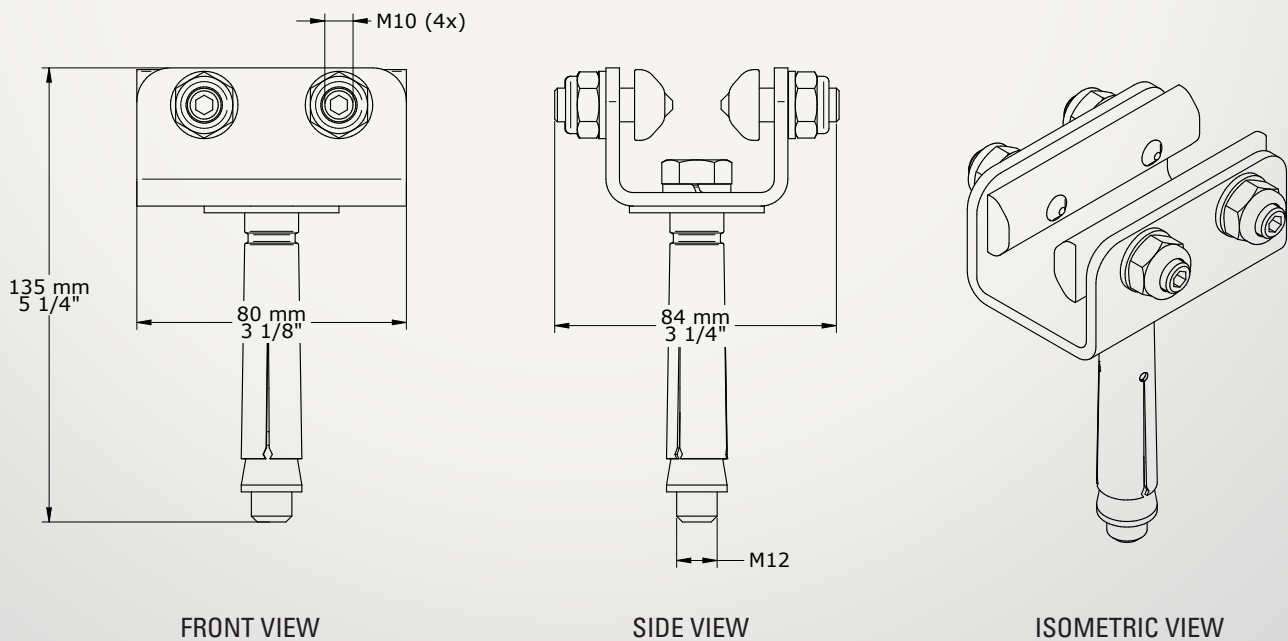
Art.: XSRail start/end support wall/overhead concrete

Version: No.2 - 19/9/2023

Art. no. : 60212

Description

The XSRail start/end support wall/overhead concrete forms the connection between the XSRail and wall/overhead concrete structure.



COMPONENT SPECIFICATIONS

Art. no.	Material	Dimensions mm (inch)	Weight in kg (lbs)
60212	AISI 316	80x135x84 mm (3 1/8"x5 1/4"x3,14")	0,8 kg (1.7 lbs)

COMPATIBILITY & WARNINGS

1. The XSRail start/end support wall/overhead concrete is designed to be used in combination with the XSRail (60002, 60004 & 60006).
2. The XSRail start/end support wall/overhead concrete can be installed directly to concrete wall/overhead structure by means of M12 bolt and mechanical anchor.

Standards and requirements

XSPlatforms fall protection systems are designed to meet the requirements of:

1. EN 795:2012 type D, CEN/TS 16415:2013 type D
2. ANSI Z359 (Fall Protection Code), OSHA 1926.502.M:2011 (North America)
3. CSA Z259.16-15:2017 (Canada)
4. AS/NZS 1891.2:2001 (Australia and New Zealand)

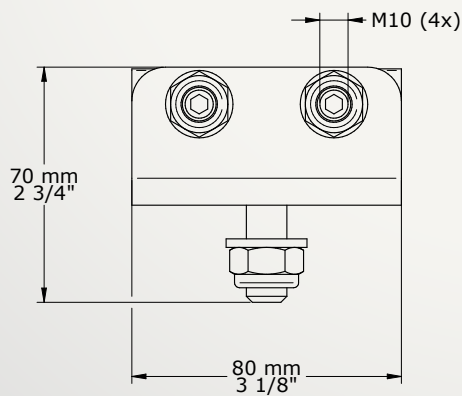
Art.: XSRail start/end support wall/overhead steel

Version: No. 2 - 19/9/2023

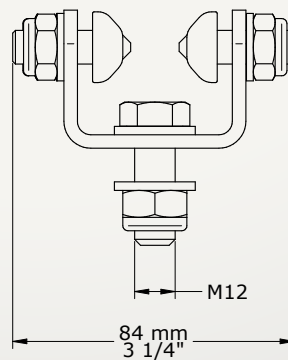
Art. no. : 60213

Description

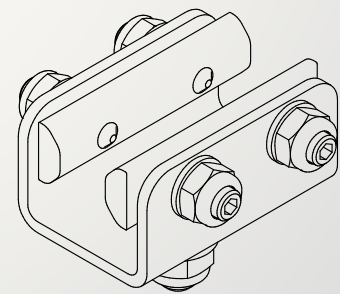
The XSRail start/end support wall/overhead steel forms the connection between the XSRail and wall/overhead steel structure.



FRONT VIEW



SIDE VIEW



ISOMETRIC VIEW

COMPONENT SPECIFICATIONS

Art. no.	Material	Dimensions mm (inch)	Weight in kg (lbs)
60213	AISI 316	80x84x70 mm (3 1/8"x3 1/4"x2 3/4")	0,7 kg (1.6 lbs)

COMPATIBILITY & WARNINGS

1. The XSRail start/end support wall/overhead steel is designed to be used in combination with the XSRail (60002, 60004 & 60006).
2. The XSRail start/end support wall/overhead steel can be installed directly to steel wall/overhead structure by means of M12 fasteners.

Standards and requirements

XSPlatforms fall protection systems are designed to meet the requirements of:

1. EN 795:2012 type D, CEN/TS 16415:2013 type D
2. ANSI Z359 (Fall Protection Code), OSHA 1926.502.M:2011 (North America)
3. CSA Z259.16-15:2017 (Canada)
4. AS/NZS 1891.2:2001 (Australia and New Zealand)

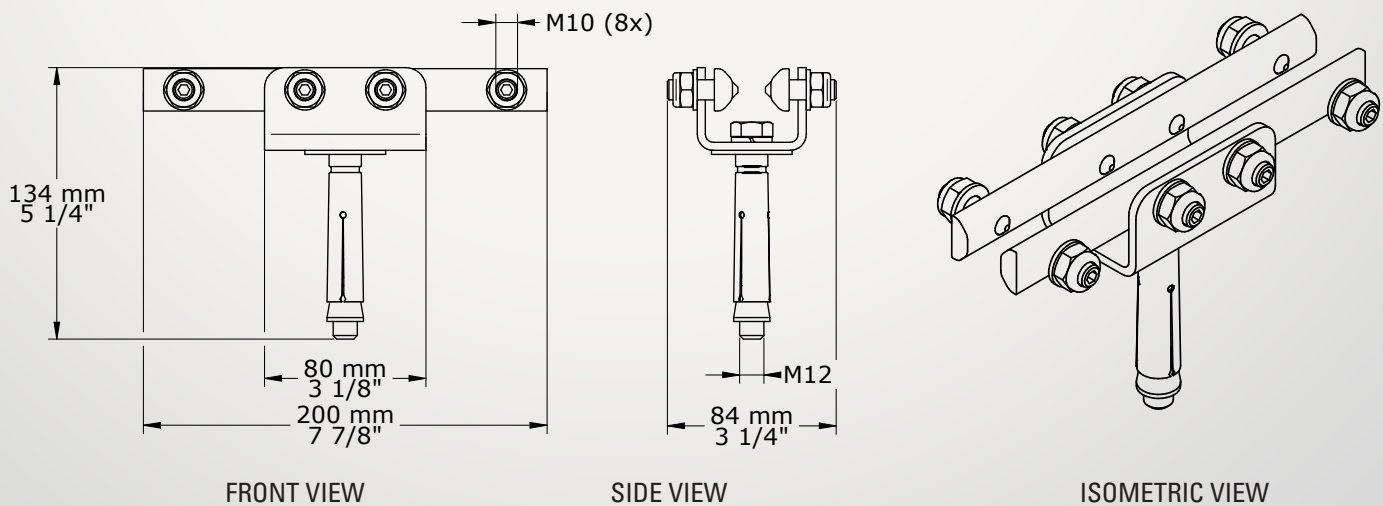
Art.: XSRail link support wall/overhead concrete

Version: No.2 - 19/9/2023

Art. no. : 60214

Description

The XSRail link support wall/overhead concrete forms the connection between the XSRail and wall/overhead concrete structure.



COMPONENT SPECIFICATIONS

Art. no.	Material	Dimensions mm (inch)	Weight in kg (lbs)
60214	AISI 316	200x84x134 mm (7 7/8"x3 1/4"x5 1/4")	1,2 kg (2.6 lbs)

COMPATIBILITY & WARNINGS

1. The XSRail link support wall/overhead concrete is designed to be used in combination with the XSRail (60002, 60004 & 60006).
2. The XSRail link support wall/overhead concrete can be installed directly to concrete wall/overhead structure by means of M12 bolt and mechanical anchor.

Standards and requirements

XSPlatforms fall protection systems are designed to meet the requirements of:

1. EN 795:2012 type D, CEN/TS 16415:2013 type D
2. ANSI Z359 (Fall Protection Code), OSHA 1926.502.M:2011 (North America)
3. CSA Z259.16-15:2017 (Canada)
4. AS/NZS 1891.2:2001 (Australia and New Zealand)

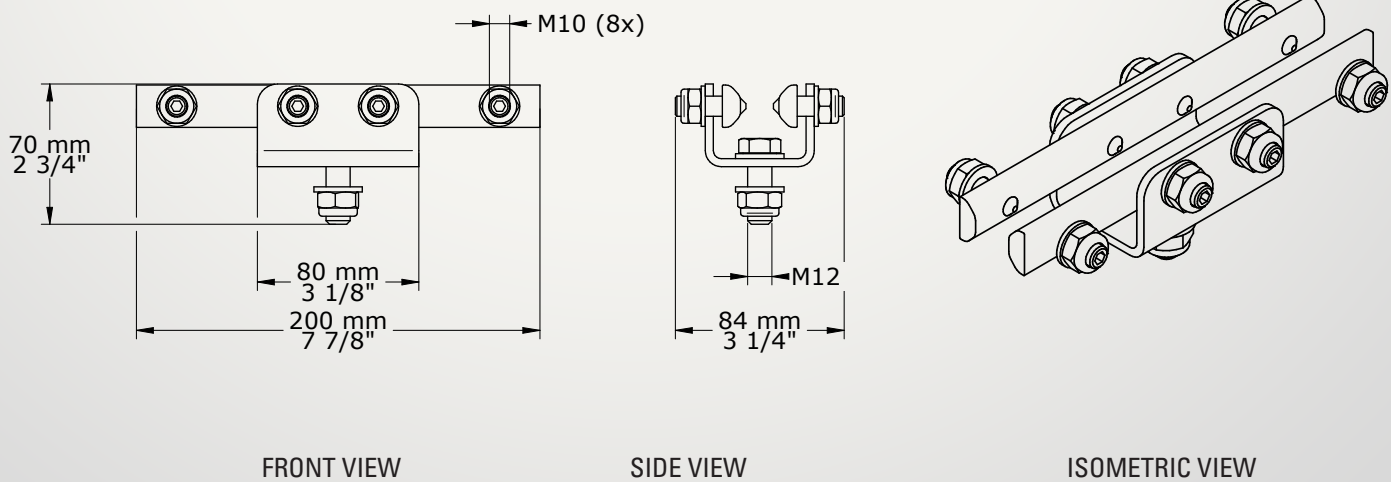
Art.: XSRail link support wall/overhead steel

Version: No.2 - 19/9/2023

Art. no. : 60215

Description

The XSRail link support wall/overhead steel forms the connection between the XSRail and wall/overhead steel structure.



FRONT VIEW

SIDE VIEW

ISOMETRIC VIEW

COMPONENT SPECIFICATIONS

Art. no.	Material	Dimensions mm (inch)	Weight in kg (lbs)
60215	AISI 316	80x84x70 mm (3 1/8"x3 1/4"x2 3/4")	0,7 kg (1.6 lbs)

COMPATIBILITY & WARNINGS

1. The XSRail link support wall/overhead steel is designed to be used in combination with the XSRail (60002, 60004 & 60006).
2. The XSRail link support wall/overhead steel can be installed directly to steel wall/overhead structure by means of M12 bolt and mechanical anchor.

Standards and requirements

XSPlatforms fall protection systems are designed to meet the requirements of:

1. EN 795:2012 type D, CEN/TS 16415:2013 type D
2. ANSI Z359 (Fall Protection Code), OSHA 1926.502.M:2011 (North America)
3. CSA Z259.16-15:2017 (Canada)
4. AS/NZS 1891.2:2001 (Australia and New Zealand)

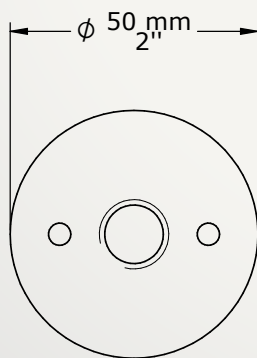
Art.: XSRail connector

Version: No. 2 - 19/9/2023

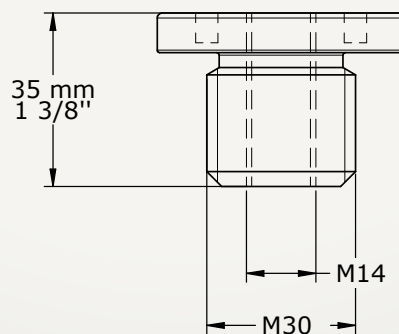
Art. no. : 60220

Description

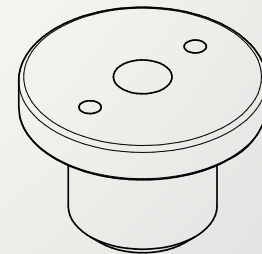
The XSRail connector with M30 thread is screwed directly into the XSBase plate. It serves as an adaptor between the XSBase plate and the XSRail (corner) support.



TOP VIEW



SIDE VIEW



ISOMETRIC VIEW

COMPONENT SPECIFICATIONS

Art. no.	Material	Dimensions mm (inch)	Weight in kg (lbs)
60220	AISI 316	35x50x50mm (1 3/8" x2" x2")	0,23 kg (0.50 lbs)

COMPATIBILITY & WARNINGS

1. The XSRail connector is always used in combination with the XSBase plate.
2. Use the XSKey to tighten the XSRail connector on the XSBase plate, max. torque of 15 Nm.

Standards and requirements

XSPlatforms guardrail systems are designed to meet the requirements for temporary and permanent edge protection systems:

1. EN 795:2012 type D, CEN/TS 16415:2013 type D
2. ANSI Z359 (Fall Protection Code), OSHA 1926.502.M:2011 (North America)
3. CSA Z259.16-15:2017 (Canada)
4. AS/NZS 1891.2:2001 (Australia and New Zealand)

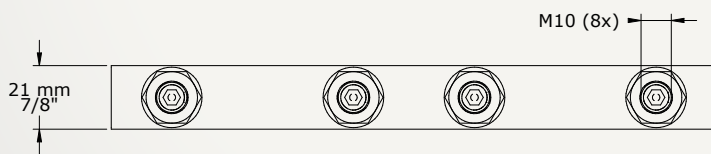
Art.: XSRail link set

Version: No.2 - 19/9/2023

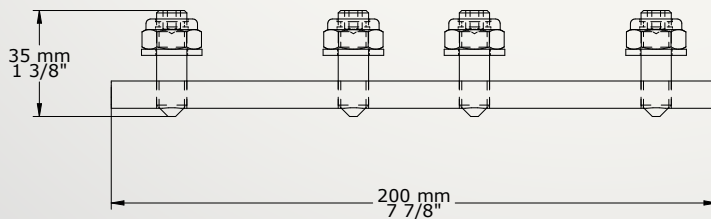
Art. no. : 60230

Description

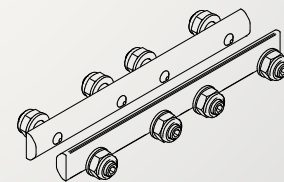
The XSRail link set consists of two trapezoidal stainless steel strips each with a set of four M10 hexagon socket screws with cone point (DIN 914). It needs to be used in pairs to link XSRail sections to one another.



TOP VIEW



SIDE VIEW



ISOMETRIC VIEW

COMPONENT SPECIFICATIONS

Art. no.	Material	Dimensions mm (inch)	Weight in kg (lbs)
60230	AISI 316	200x21 (7 7/8"x7/8")	0,76 kg (1.7 lbs)

COMPATIBILITY & WARNINGS

1. The XSRail link set is used to connect XSRail sections.

Standards and requirements

XSPlatforms guardrail systems are designed to meet the requirements for temporary and permanent edge protection systems:

1. EN 795:2012 type D, CEN/TS 16415:2013 type D
2. ANSI Z359 (Fall Protection Code), OSHA 1926.502.M:2011 (North America)
3. CSA Z259.16-15:2017 (Canada)
4. AS/NZS 1891.2:2001 (Australia and New Zealand)

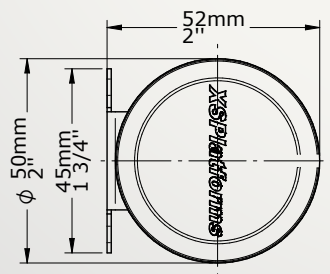
Art.: XSRail stop

Version: No.2 - 19/9/2023

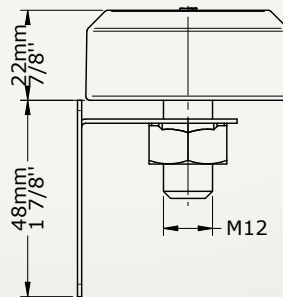
Art. no. : 60240

Description

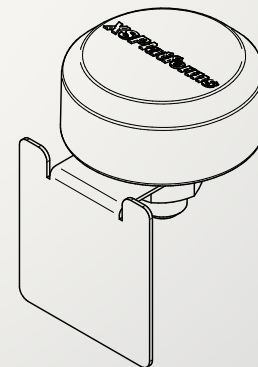
This component functions as an end point for the XSRail system and prevents the rail runner from running off at the end of the XSRail system. The XSRail stop must be installed as a terminator at all ends of an XSRail system.



FRONT VIEW



SIDE VIEW



ISOMETRIC VIEW

COMPONENT SPECIFICATIONS

Art. no.	Material	Dimensions mm (inch)	Weight in kg (lbs)
60240	AISI 316 / rubber	50x52x70 mm (2" x 2" x 2 3/4")	0,16 kg (0.35 lbs)

COMPATIBILITY & WARNINGS

1. XSRail stop is installed at the ends of the XSRail system.
2. Use the XSRail stop on every end of the track.

Standards and requirements

XSPlatforms guardrail systems are designed to meet the requirements for temporary and permanent edge protection systems:

1. EN 795:2012 type D, CEN/TS 16415:2013 type D
2. ANSI Z359 (Fall Protection Code), OSHA 1926.502.M:2011 (North America)
3. CSA Z259.16-15:2017 (Canada)
4. AS/NZS 1891.2:2001 (Australia and New Zealand)

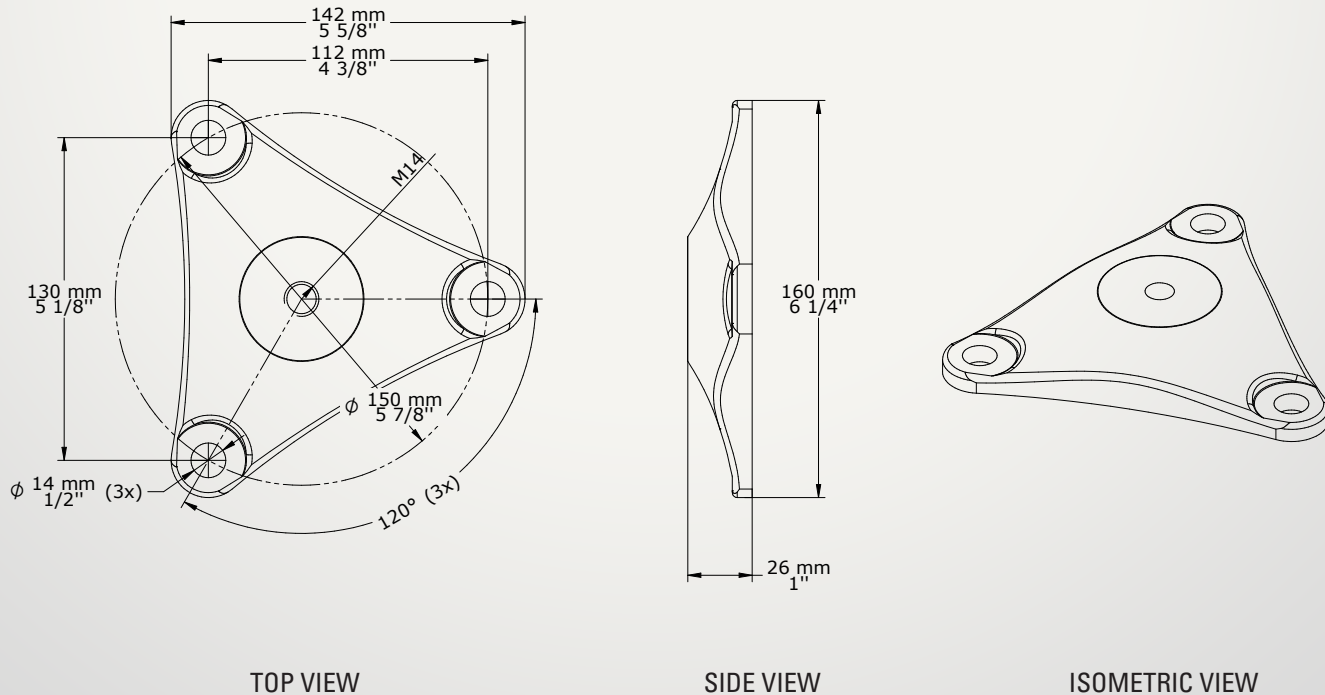
Art.: XSRail base plate wall/overhead

Version: No.2 - 3/2021

Art. no. : 60260

Description

The XSRail base plate for wall/overhead is used to mount the XSRail to wall and overhead structures.



COMPONENT SPECIFICATIONS

Art. no.	Material	Dimensions mm (inch)	Weight in kg (lbs)
60260	AISI 316	142 x130 mm (5 1/8" x 5 1/8")	0,8 kg (17.6 lbs)

COMPATIBILITY & WARNINGS

- Components are installed to the XSRail base plate wall/overhead by means of a hexagon socket cap screw M14.
- Different wall/overhead surfaces require different anchors (with threaded rod M12): concrete requires XSMEchanical anchors.

Standards and requirements

XSPlatforms guardrail systems are designed to meet the requirements for temporary and permanent edge protection systems:

- EN 795:2012 type D, CEN/TS 16415:2013 type D
- ANSI Z359 (Fall Protection Code), OSHA 1926.502.M:2011 (North America)
- CSA Z259.16-15:2017 (Canada)
- AS/NZS 1891.2:2001 (Australia and New Zealand)

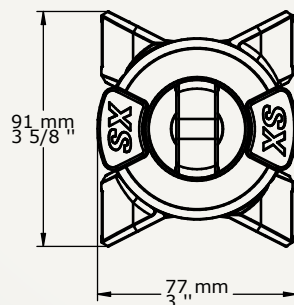
Art.: XSRail runner (horizontal)

Version: No.2 - 21/9/2023

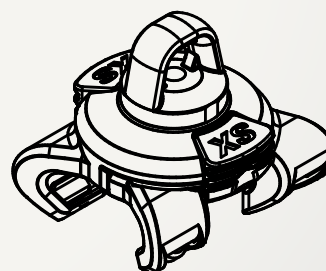
Art. no. : 60300

Description

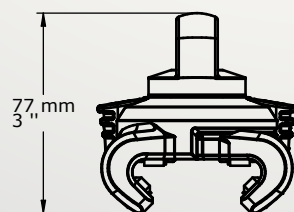
The XSRail runner (horizontal) is a detachable mobile anchor point used on XSRail system. Its rotating safety eye creates an easy and safe attachment point for a user's lanyard in all system orientations (roof, wall or overhead).



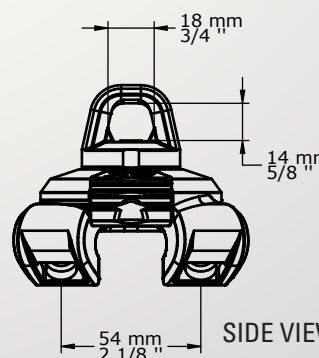
TOP VIEW



ISOMETRIC VIEW



FRONT VIEW



SIDE VIEW

COMPONENT SPECIFICATIONS

Art. no.	Material	Dimensions mm (inch)	Weight in kg (lbs)
60300	AISI 316, PA 6.6 GF25	91x77x77 mm (3 5/8"x3"x3")	0,85 kg (1.9 lbs)

COMPATIBILITY & WARNINGS

1. The XSRail runner (horizontal) is designed to be used in combination with the XSRail system (60002, 60004 & 60006).
2. Use the XSRail runner (horizontal) only on XSPlatforms rail systems (XSRail).
3. Do not use the XSRail runner (horizontal) with more than 1 person at a time.
4. Do not use the XSRail runner (horizontal) for hoisting and lifting purposes.
5. Read the user manual thoroughly and understand its content before use.

Standards and requirements

XSPlatforms guardrail systems are designed to meet the requirements for temporary and permanent edge protection systems:

1. EN 795:2012 type D, CEN/TS 16415:2013 type D
2. ANSI Z359 (Fall Protection Code), OSHA 1926.502.M:2011 (North America)
3. CSA Z259.16-15:2017 (Canada)
4. AS/NZS 1891.2:2001 (Australia and New Zealand)

SERVICE AND MAINTENANCE

XSPlatforms and her Partners advise all their customers and users of their systems to have fall protection systems and fall protection PPE inspected annually. Regular maintenance (and inspection) is crucial to guarantee maximum safety for those working at height. As the owner of a fall protection system, you are responsible for regular maintenance being performed.

CHOOSING THE RIGHT MAINTENANCE CONTRACT

Most of our Partners offer a wide choice of maintenance contracts. From single inspections to a full service contract. XSPlatforms and her Partners can advise you to choose the right contract, so it perfectly fits your wishes and needs. This way, you don't have to worry about the inspection of your fall protection system and you know that your equipment will always be safe and reliable.

CONTACT

Do you need custom advice?

We are always there to help you. Ask us for a custom service agreement or for more information about the various options for maintenance contracts.

Do you already have a contract with us?

You can expand or extend this contract quick and simple. Contact us or your supplier for more information.



Together with you, we can customize a maintenance contract to fit your wishes regarding for example:

- › The extension of the warranty period;
- › The replacement of needed parts;
- › Inspection of permanent and temporary fall protection;
- › Inspection of fall protection Personal Protective Equipment;
- › Inspection of ladders/roof access systems;
- › Inspection of facade access systems.

THE ADVANTAGES OF A MAINTENANCE CONTRACT WITH AN XSPLATFORMS CERTIFIED PARTNER

- ✓ Inspection and maintenance of a wide range of fall protection systems.
- ✓ Guaranteed quick service.
- ✓ In-house parts and materials.
- ✓ Excellent advice and service level.
- ✓ Possibility to do inspection and maintenance for fall protection PPE as well.

Supplier:



Bemo USA Corporation
1755 N. 48th Street
Mesa, Arizona USA, 85205-1115

Phoenix: +1 480-545-7900
National: 877-530-BEMO (2366)
Fax: +1 480-545-4999

Email: sales@BEMOUSA.com
techservices@BEMOUSA.com

INSPECTION FORM

Client _____ Work description _____

Project _____

Location _____

Date _____

Inspector name _____

Certificate number _____ Arrival _____ Departure _____

Equipment record

Product:		
Model & type / identification:	Trade name:	Identification number:
Manufacturer:	Address:	
	Telephone:	
	Fax:	
	E-mail:	
Website:		
Year of manufacture / life expiry date:	Purchase date:	Date first put into use:

Other relevant information (e.g. document number)

Periodic examination and repair history

Date:	Reason for entry (periodic examination or repair):	Defects noted repairs carried out and other relevant information:	Name and signature of competent person:	Periodic examination next due date:

Comments _____

Date _____ Signature client _____

Contact name _____

Inspector name _____ Signature inspector _____

ABOUT XSPLATFORMS WORK AT HEIGHT

In 1997, we began to provide safety equipment for people working on roofs in The Netherlands. At that time, safety was already more of a calling than business. Now, we are a rapidly growing international company that designs safety solutions for the most complex buildings in the world. We still have the same aspiration as we had when we started: to make working at heights safer and easier — for everyone, everywhere.

With innovative access-to-height solutions we provide everything that is necessary to get people working at height home safe.



INTERESTED?

Would you like to know more about the XSPlatforms fall protection solutions? Or would you like to receive a quote? Feel free to contact our XSPlatforms Partner at any time and they will be happy to help you.

FOLLOW XSPLATFORMS

Stay in touch! Follow XSPlatforms' social media channels for interesting articles and the latest news.



Bemo USA Corporation
1755 N. 48th Street
Mesa, Arizona, USA 85205

USA Office Ph. +1 480-545-7900
USA Office fax +1 480-545-4999

BEMOUSA.COM

