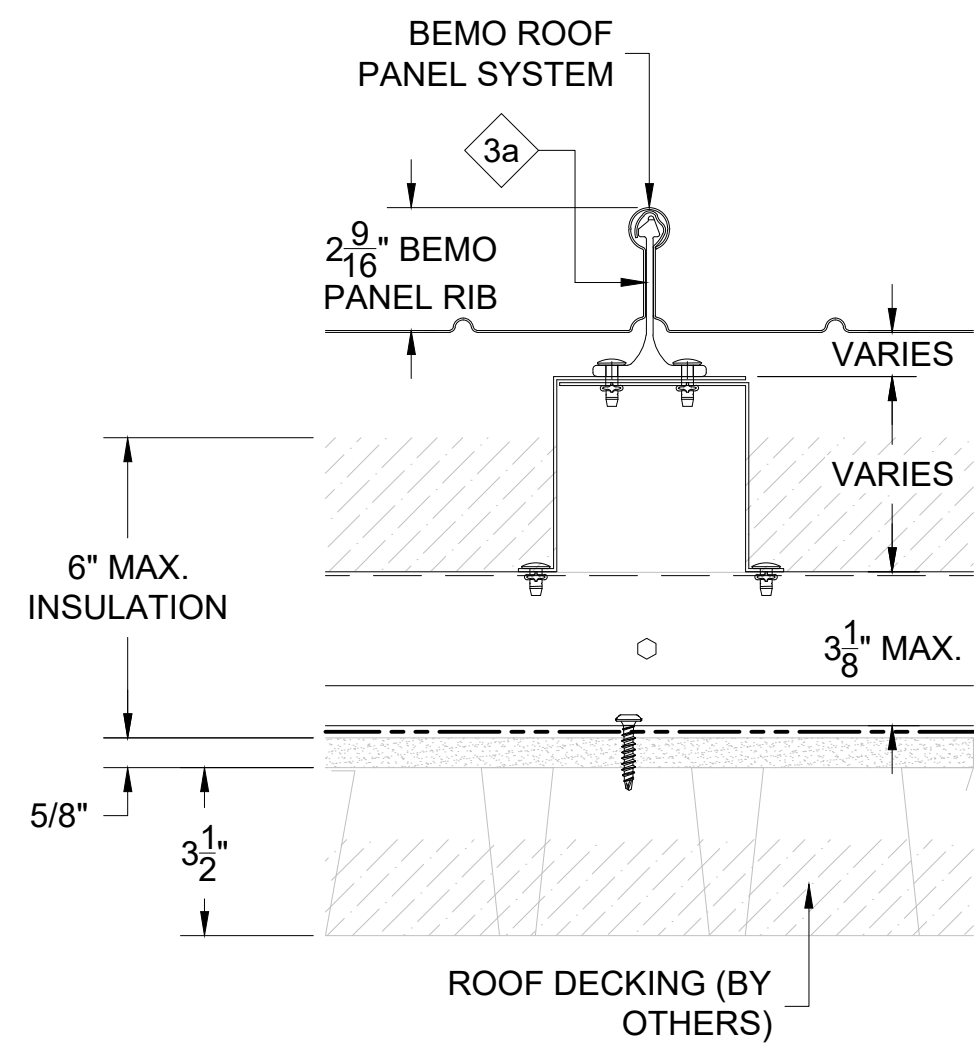
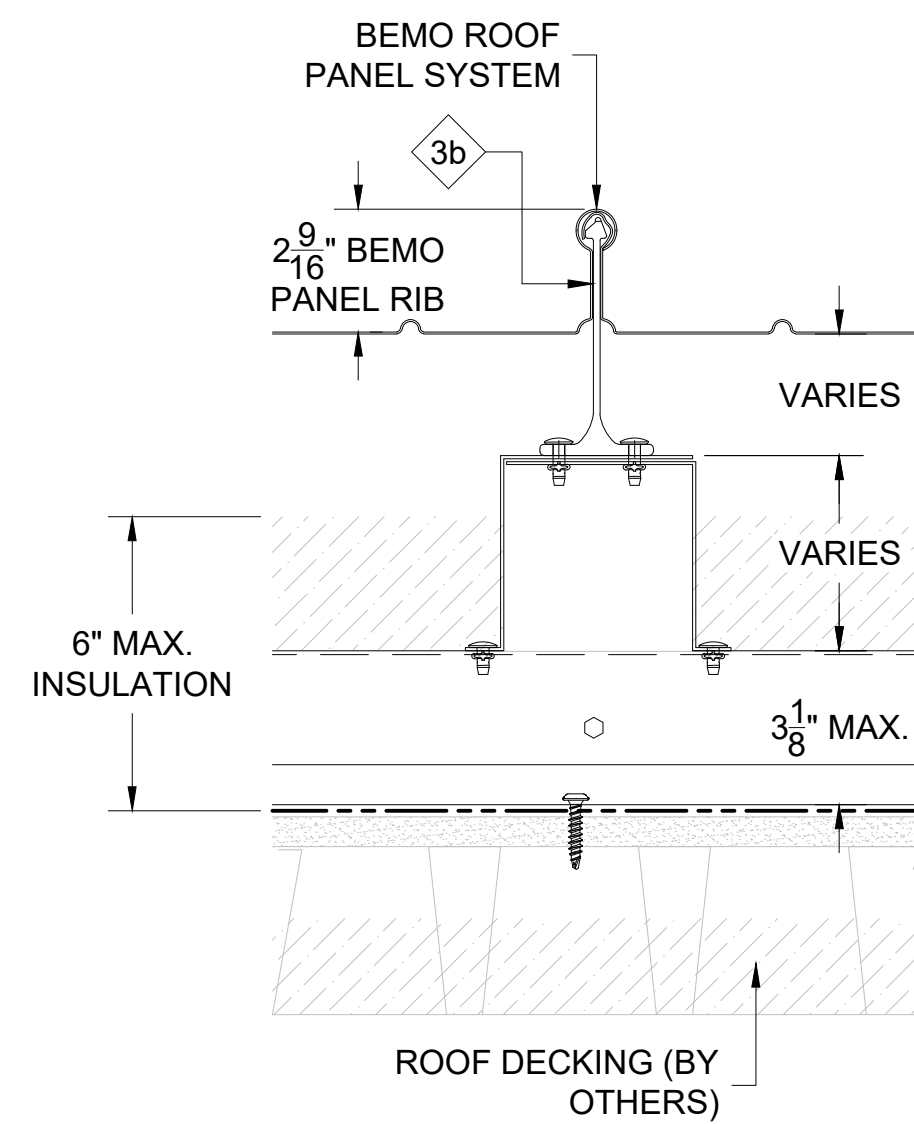


**NOTES:**  
 1. HALTER AND FLEX SUPPORT HEIGHTS VARY; SEE ROOF PLANS FOR HEIGHTS AND LOCATIONS.  
 2. ALL FASTENERS MUST PENETRATE 3/4" MIN. THROUGH SUBSTRATE.

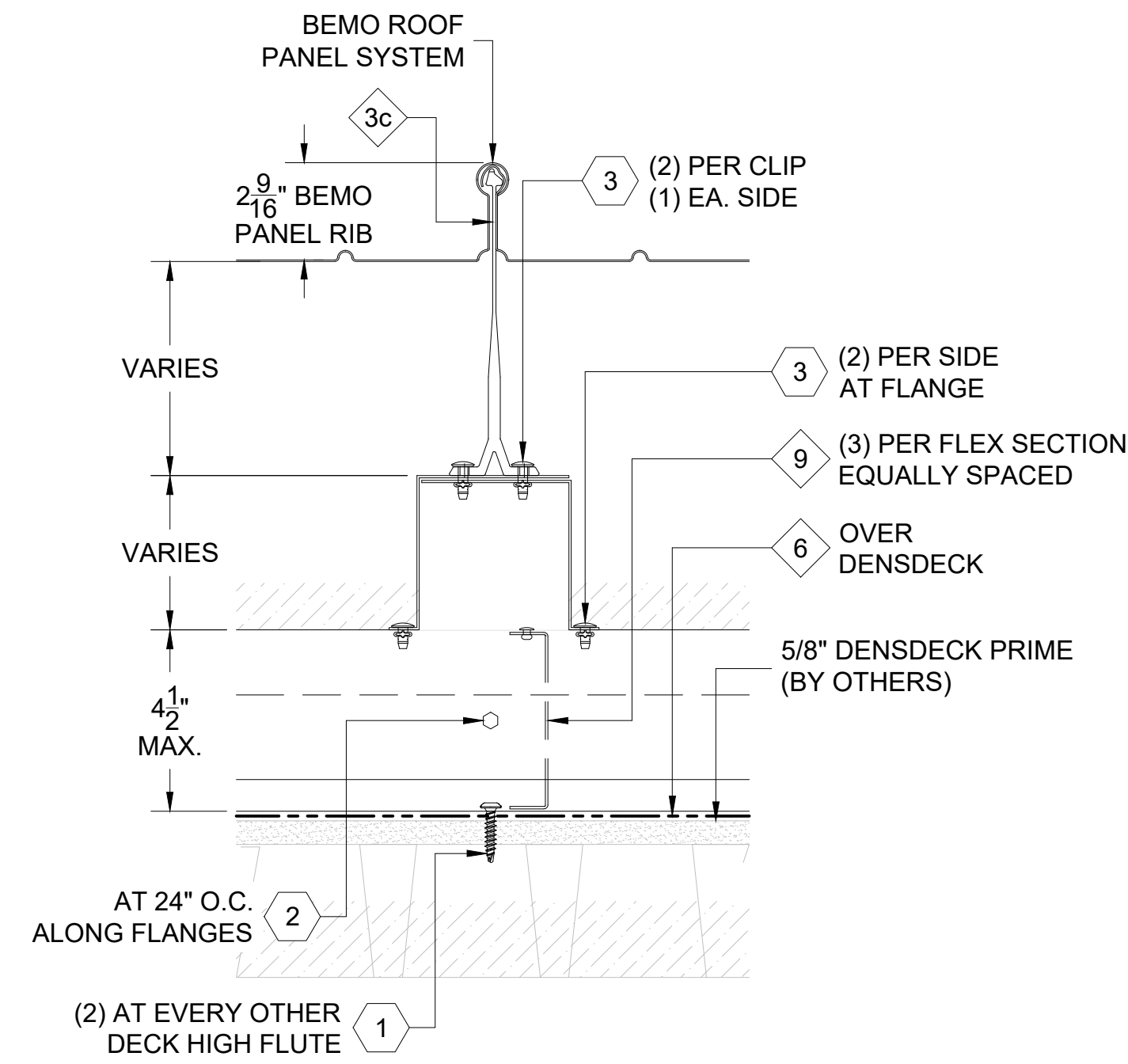
THIS DETAIL IS GENERAL IN NATURE AND WILL BE MODIFIED TO MEET JOB SPECIFIC CONDITIONS



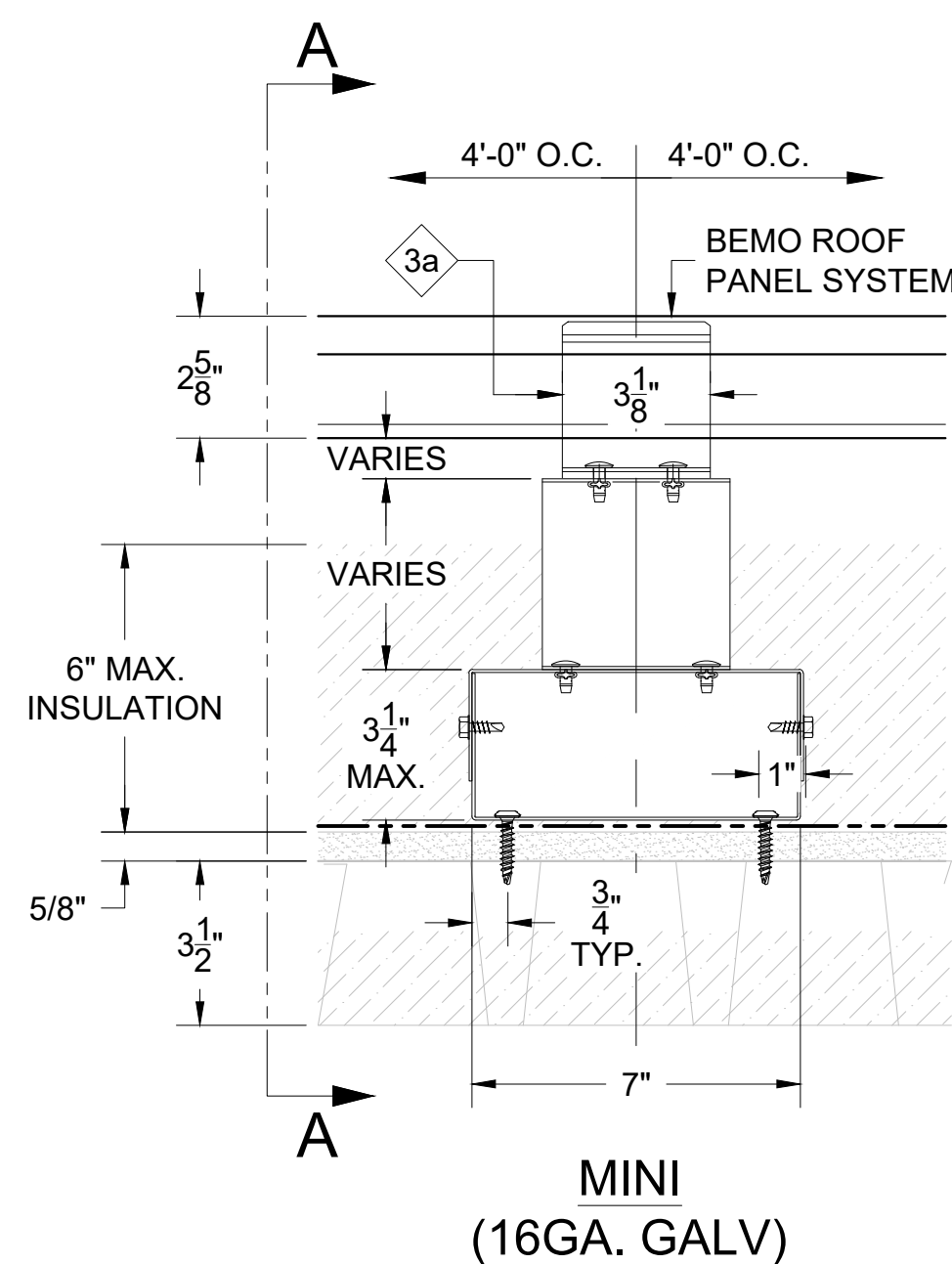
SECTION A-A



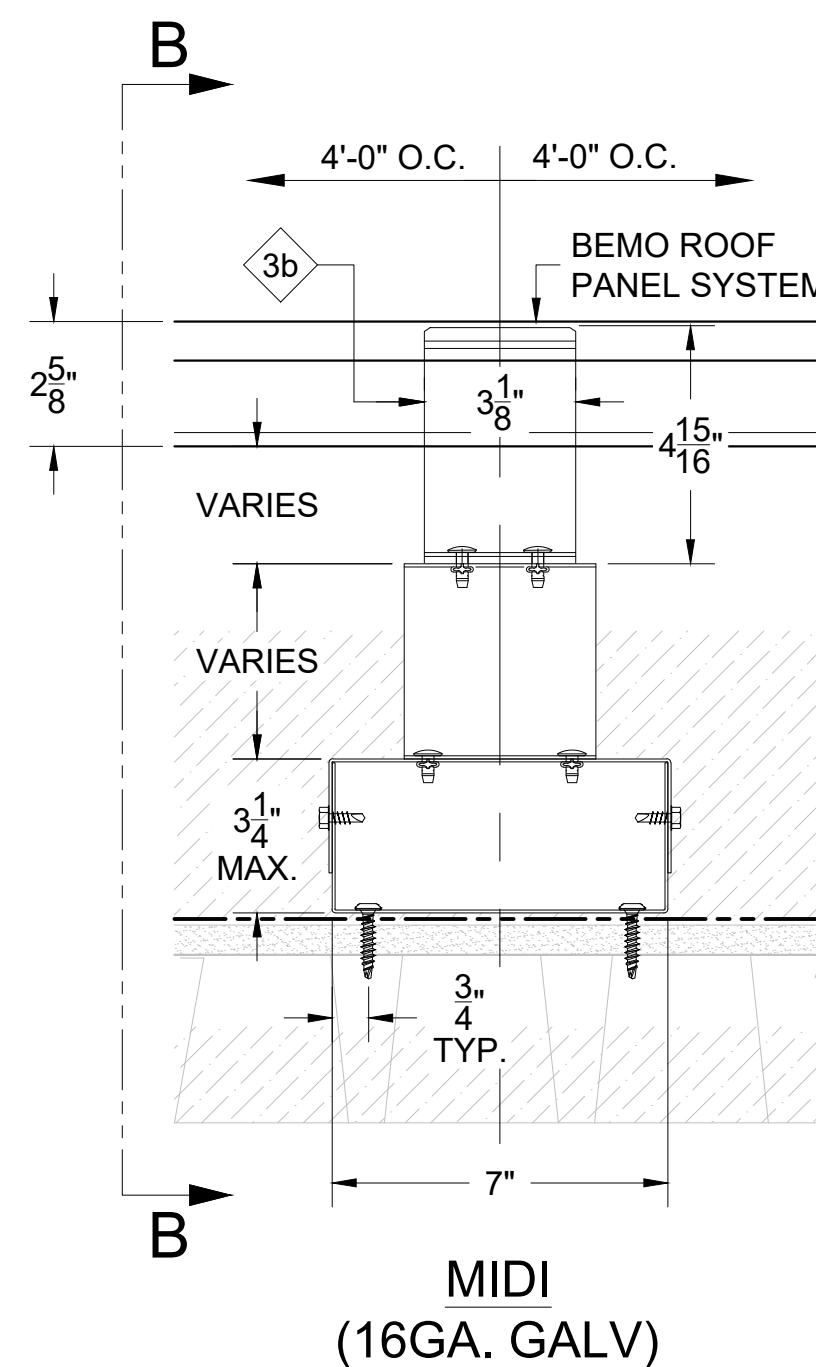
SECTION B-B



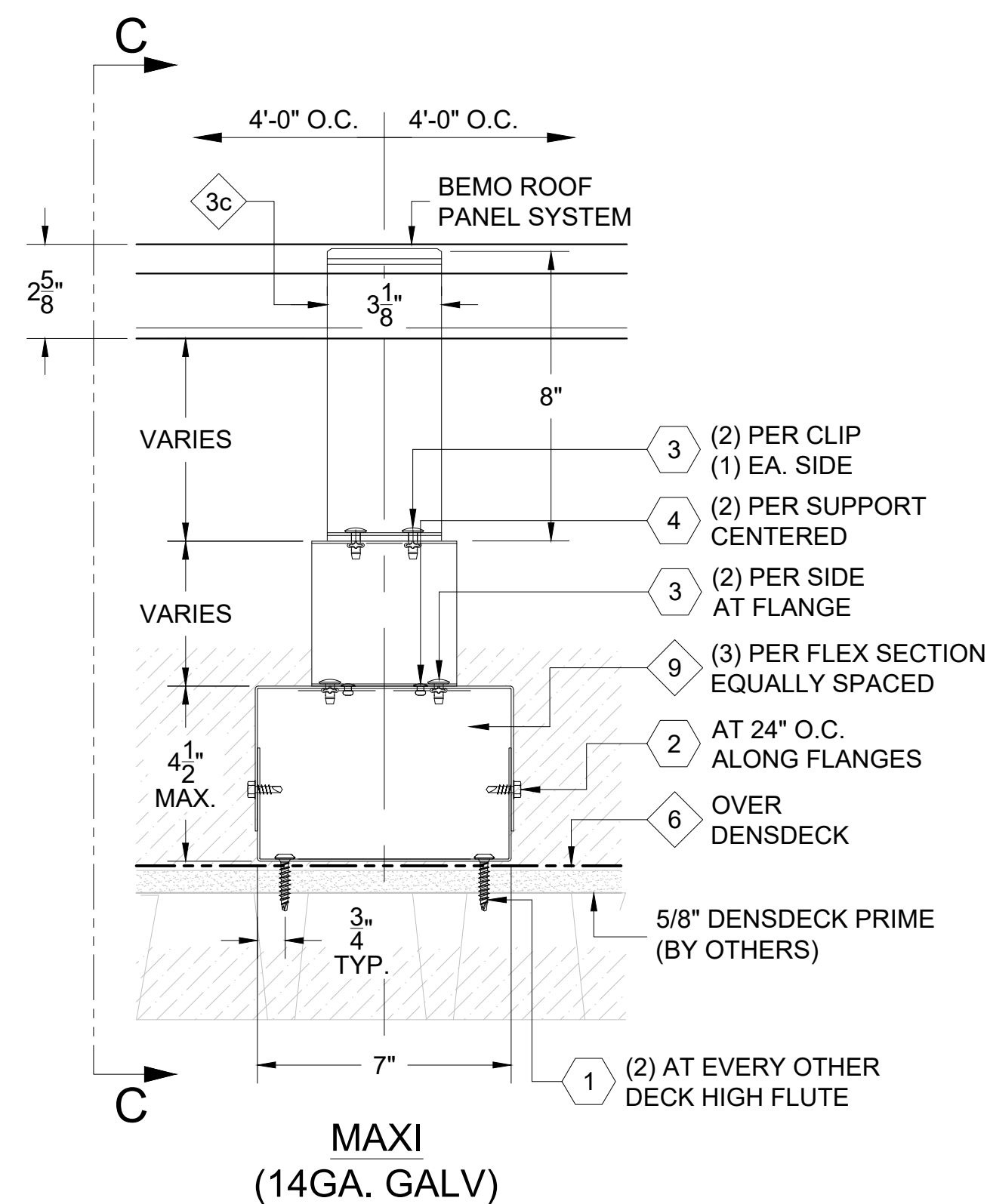
SECTION C-C



MINI (16GA. GALV)



MIDI (16GA. GALV)



MAXI (14GA. GALV)

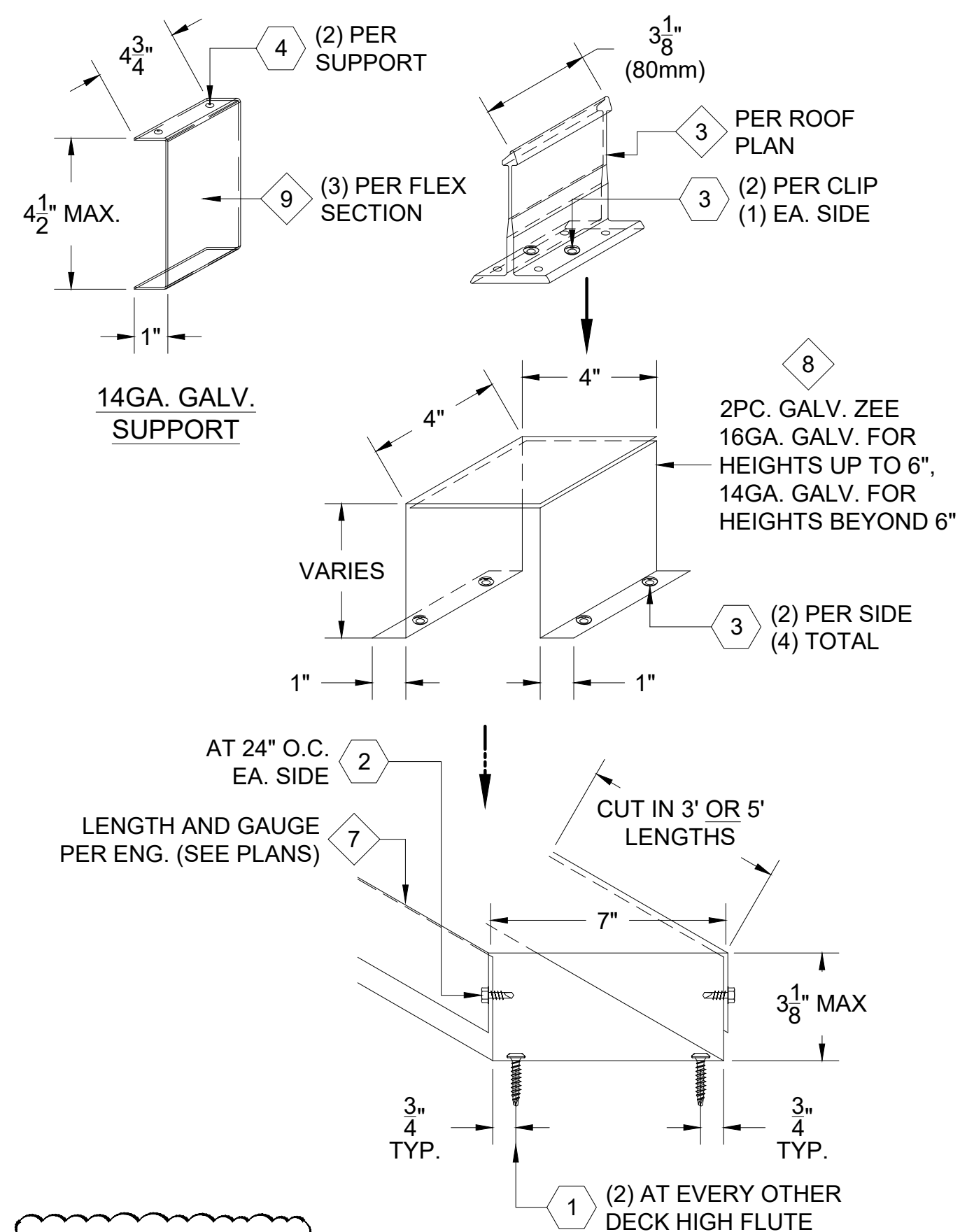
**FASTENER DESIGNATIONS**

MARK	DESCRIPTION	IMAGE
1	#14-10 x 1 1/2" DEKFAST SCREW (OR COMPARABLE)	
2	1/4"-14x 3/4" LONG HWH TEK-3 SCREW	
3	1/4"Ø BULB-TITE RIVET (W/ BONDED WASHER)	
4	3/16"Ø CLOSED END S.S. RIVET	
5	1/4"-20x 1" STAINLESS STEEL BOLT ASSEMBLY	
5a	1/4"-20x 1" HEX HEAD STAINLESS STEEL BOLT	
5b	3/4" COMB. STAINLESS STEEL AND SEALING WASHER	
5c	1/4"-20 STAINLESS STEEL LOCKING NUT	
6	1/4"-14x 1 1/2" LONG HWH TEK-3 SCREW	
7	FAS-10-4 FAB-LOK FASTENER	
8		
9		

\* (1000 HRS OF CORROSION RESISTANT COATING IN ACCORDANCE WITH ASTM B117)

**MATERIAL DESIGNATIONS**

MARK	DESCRIPTION
1	BEMO SLIDING HOOK CLIP W/ GALV. BASE
2	BEMO FIXED HOOK CLIP
3	BEMO POLYAMIDE THERMAL HALTER CLIP
4	BEMO ALUMINUM HALTER CLIP
5	BEMO HALTER CLIP THERMAL PAD
6	BEMO "40 MIL HT MEMBRANE" (3'x 65' ROLLS)
7	2 PC. GALVANIZED BASE CHANNEL (SEE DRAWINGS FOR GAUGE)
8	2 PC. GALVANIZED ZEE [HAT] SUPPORT (SEE DRAWINGS FOR GAUGE)
9	14GA. GALVANIZED "C" SHAPED SUPPORT (3 PER FLEX SECTION)
10	14GA. GALVANIZED REINFORCING CAP
11	16GA. GALVANIZED 6"x 6" BASEPLATE
12	



ISOMETRIC VIEW

\*HOLES IN ALUM. HALTER CLIPS FOR FIXING BOLTS TO BE PRE-PUNCHED IN SHOP

[NOTE: ISOMETRIC VIEW IS FOR VISUALIZATION ONLY - OBJECTS NOT TO SCALE]

MARK	HALTER DESCRIPTION
3a	85/80 PLOYAMIDE THERMAL HALTER
3b	125/80 PLOYAMIDE THERMAL HALTER
3c	205/80 PLOYAMIDE THERMAL HALTER

1 BEMO FLEX SLIDING HALTER DETAILS  
 D1 REF. ARCH. DET. -



BEMO STANDARD DETAILS  
 BEMO FLEX DETAILS

PROJECT ADDRESS \_\_\_\_\_  
 CUSTOMER NAME \_\_\_\_\_  
 ARCHITECT NAME \_\_\_\_\_

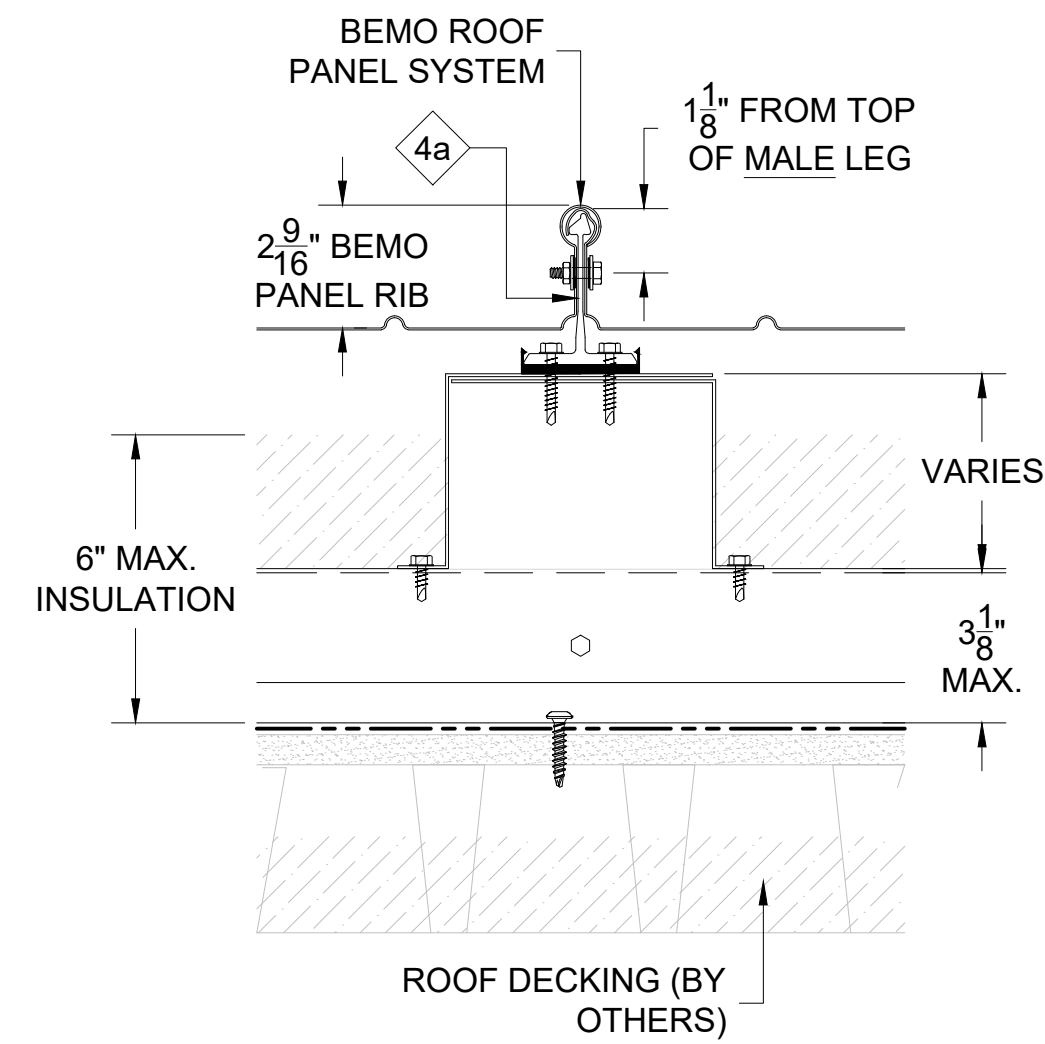
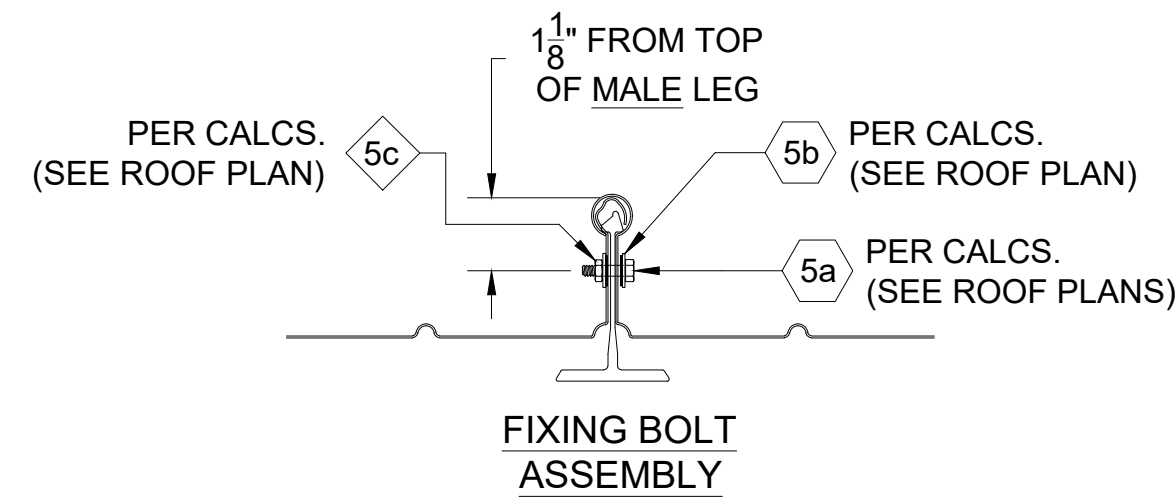
DRAWN:	D. GOSS
CHECKED:	
PROJECT NUMBER:	####
NO.	REVISION / ISSUE
	DATE

DWG TITLE  
 SLIDING HALTER DETAILS

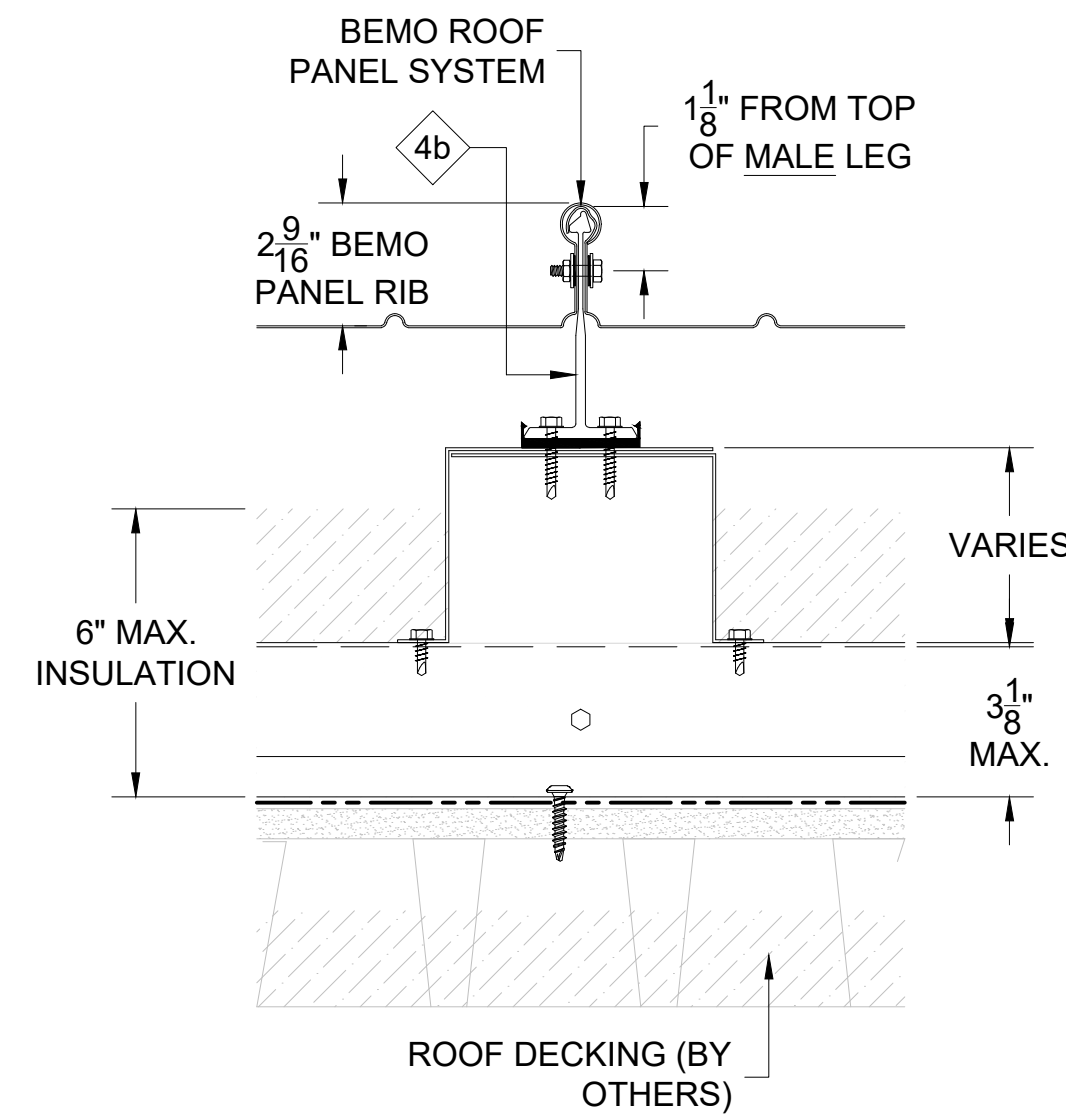
SCALE	DWG NO.
3" = 1'-0"	D1
REV	

- NOTES:**
- BOLT LOCATION TO BE 1 1/8" DOWN FROM TOP OF MALE LEG; DRILL 1/4" DIA. HOLE IN MALE AND FEMALE PANEL RIBS AS PANELS ARE BEING INSTALLED.
  - LOCATION OF 'FIXED' POINT TO BE SHOWN ON ROOF PLAN; CONSULT MANUFACTURER FOR LOCATION AND REQUIRED NUMBER OF ROWS OF 'FIXED' HALTERS.
  - ALL FASTENERS MUST PENETRATE 3/4" MIN. THROUGH SUBSTRATE.

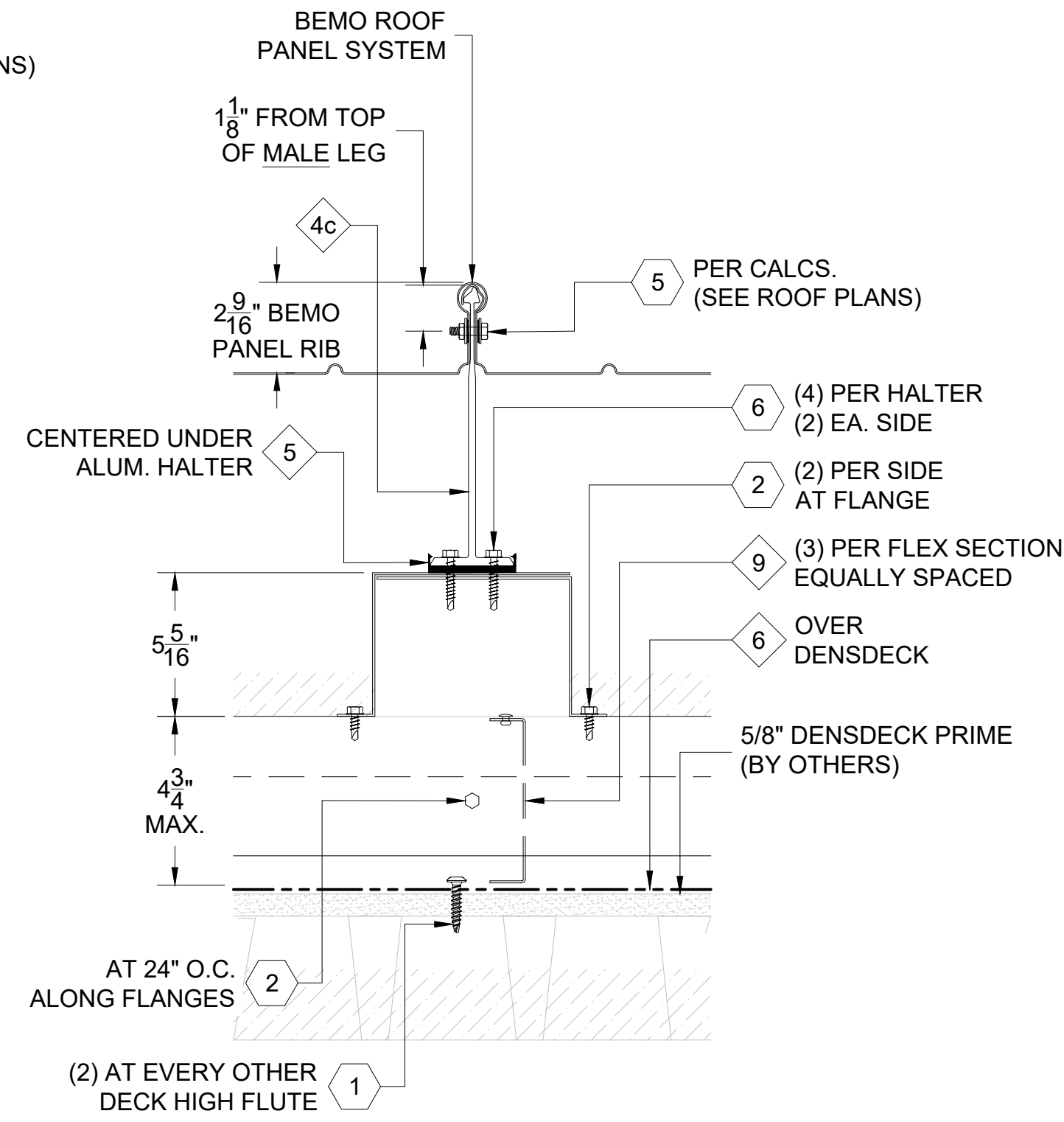
THIS DETAIL IS GENERAL IN NATURE AND WILL BE MODIFIED TO MEET JOB SPECIFIC CONDITIONS



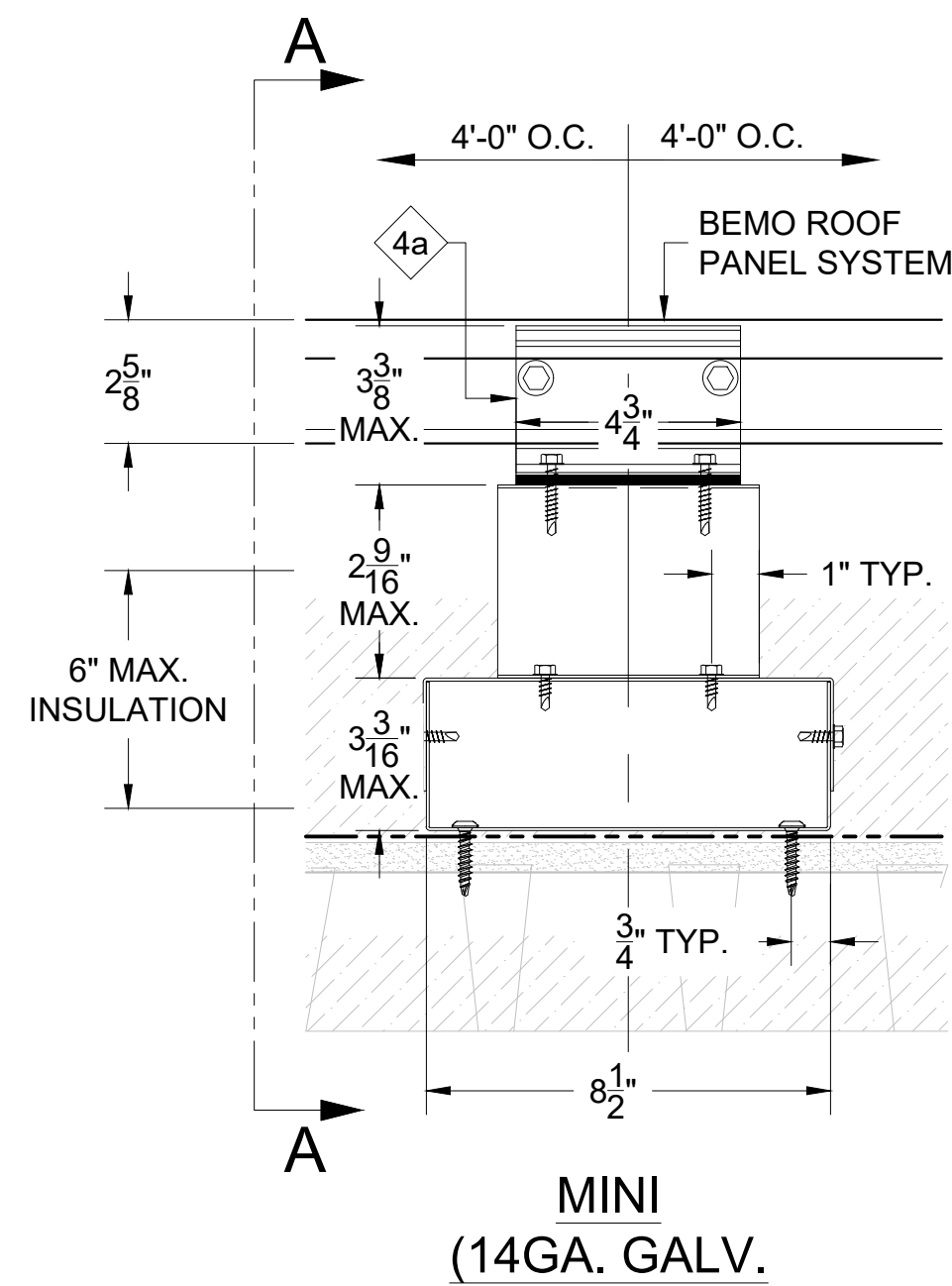
SECTION A-A



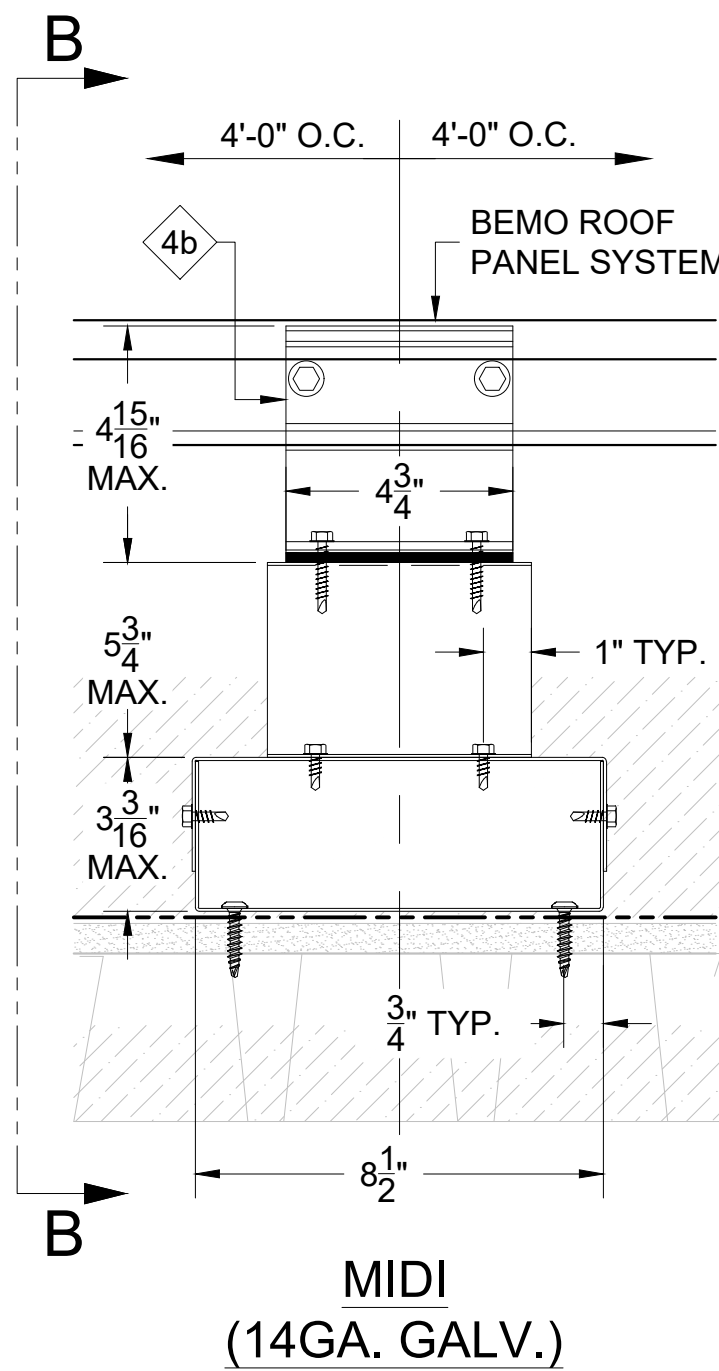
SECTION B-B



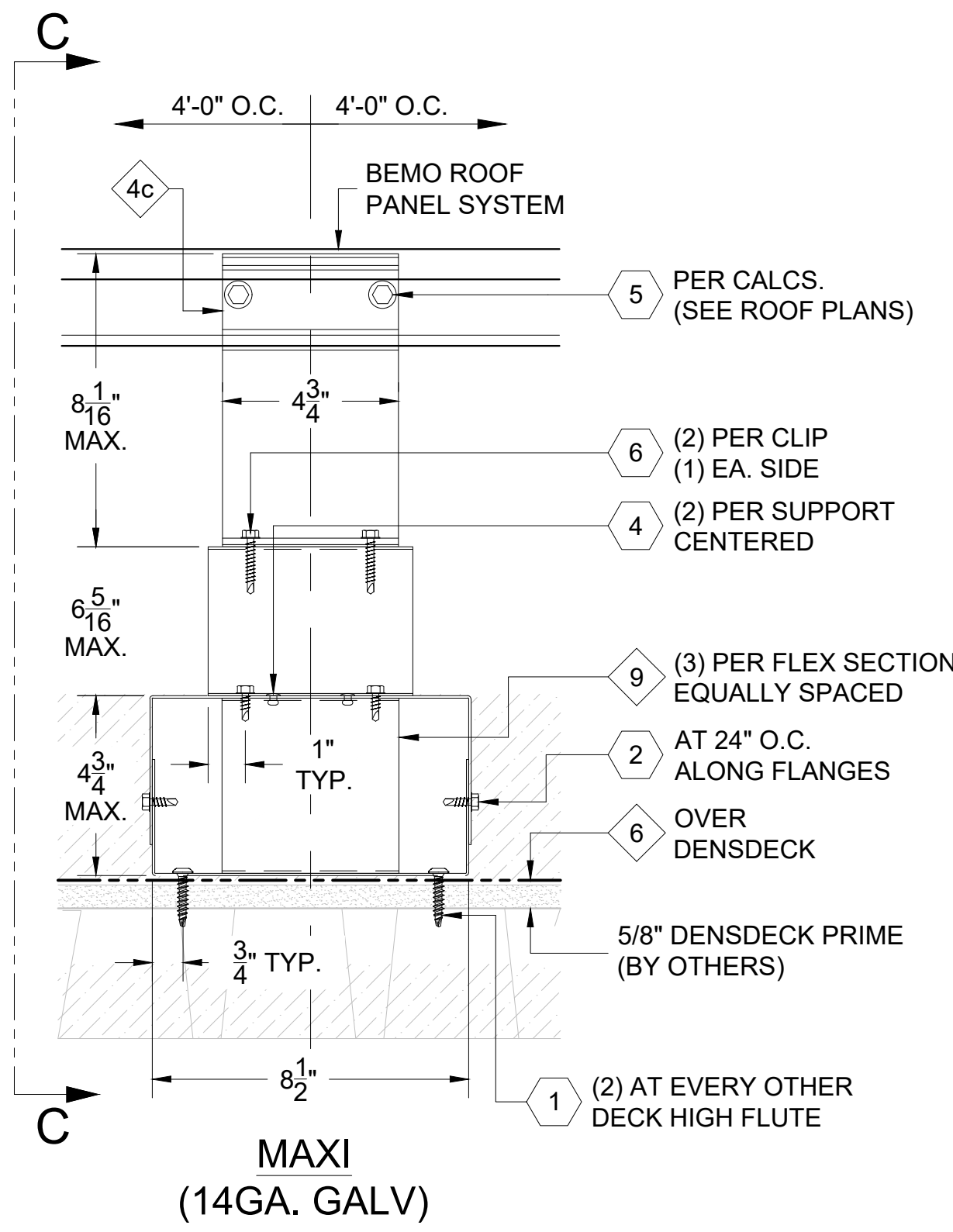
SECTION C-C



MINI  
(14GA. GALV.)



MIDI  
(14GA. GALV.)



MAXI  
(14GA. GALV.)

MARK	HALTER DESCRIPTION
4a	85/80 ALUMINUM HALTER
4b	125/80 ALUMINUM HALTER
4c	205/80 ALUMINUM HALTER

1 BEMO FLEX FIXED HALTER DETAILS  
D1 REF. ARCH. DET. -

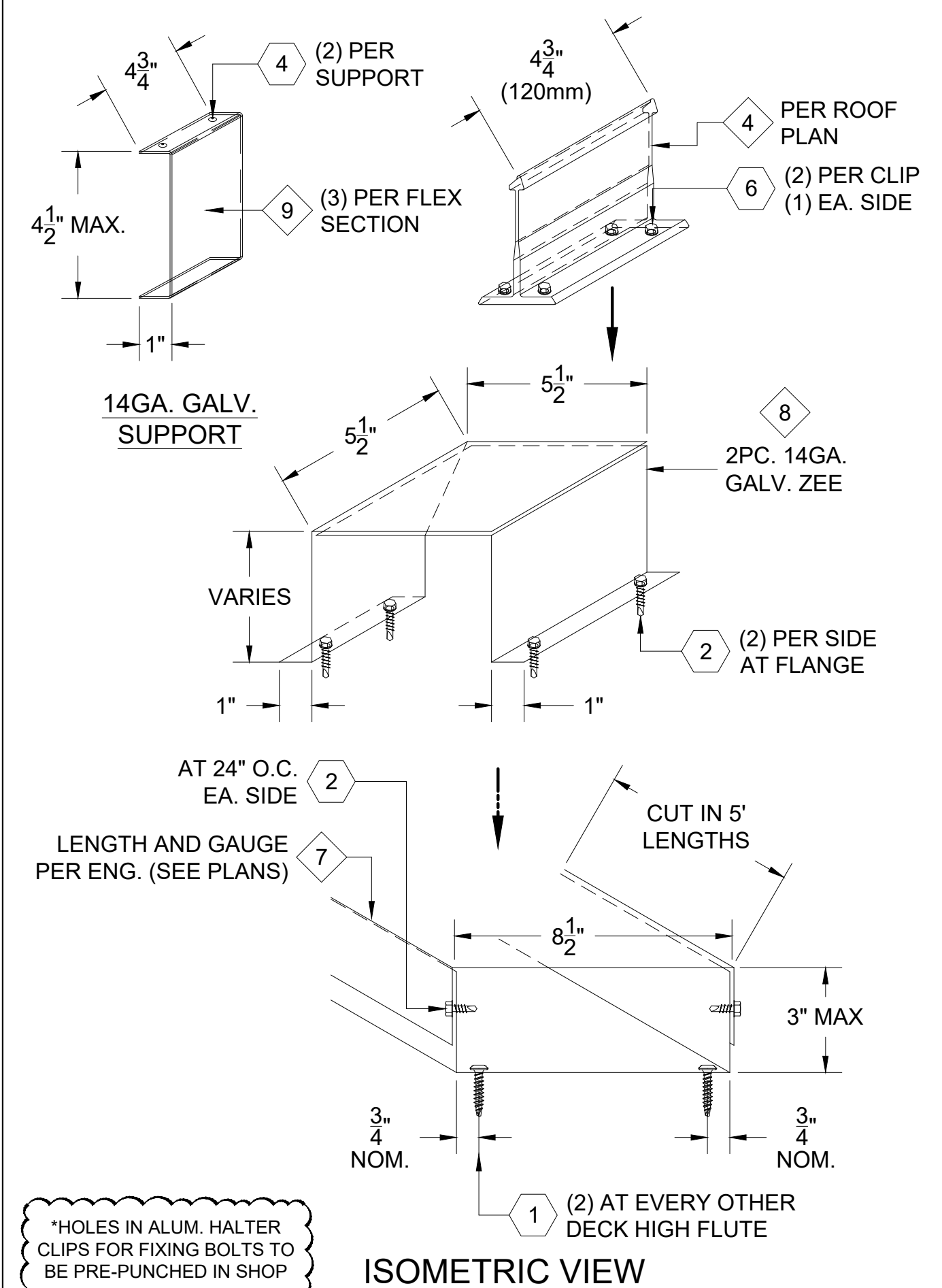
**FASTENER DESIGNATIONS**

MARK	DESCRIPTION	IMAGE
1	#14-10 x 1 1/2" DEKFAST SCREW (OR COMPARABLE)	
2	1/4"-14x 3/4" LONG HWH TEK-3 SCREW	
3	1/4"Ø BULB-TITE RIVET (W/ BONDED WASHER)	
4	3/16"Ø CLOSED END S.S. RIVET	
5	1/4"-20x 1" STAINLESS STEEL BOLT ASSEMBLY	
5a	1/4"-20x 1" HEX HEAD STAINLESS STEEL BOLT	
5b	3/4" COMB. STAINLESS STEEL AND SEALING WASHER	
5c	1/4"-20 STAINLESS STEEL LOCKING NUT	
6	1/4"-14x 1 1/2" LONG HWH TEK-3 SCREW	
7	FAS-10-4 FAB-LOK FASTENER	
8		
9		

\* (1000 HRS OF CORROSION RESISTANT COATING IN ACCORDANCE WITH ASTM B117)

**MATERIAL DESIGNATIONS**

MARK	DESCRIPTION
1	BEMO SLIDING HOOK CLIP W/ GALV. BASE
2	BEMO FIXED HOOK CLIP
3	BEMO POLYAMIDE THERMAL HALTER CLIP
4	BEMO ALUMINUM HALTER CLIP
5	BEMO HALTER CLIP THERMAL PAD
6	BEMO "40 MIL HT MEMBRANE" (3'x 65' ROLLS)
7	2 PC. GALVANIZED BASE CHANNEL (SEE DRAWINGS FOR GAUGE)
8	2 PC. GALVANIZED ZEE [HAT] SUPPORT (SEE DRAWINGS FOR GAUGE)
9	14GA. GALVANIZED "C" SHAPED SUPPORT (3 PER FLEX SECTION)
10	14GA. GALVANIZED REINFORCING CAP
11	16GA. GALVANIZED 6"x 6" BASEPLATE
12	



\*HOLES IN ALUM. HALTER CLIPS FOR FIXING BOLTS TO BE PRE-PUNCHED IN SHOP

ISOMETRIC VIEW

[NOTE: ISOMETRIC VIEW IS FOR VISUALIZATION ONLY - OBJECTS NOT TO SCALE]



BEMO STANDARD DETAILS  
BEMO FLEX DETAILS  
PROJECT ADDRESS  
CUSTOMER NAME  
ARCHITECT NAME

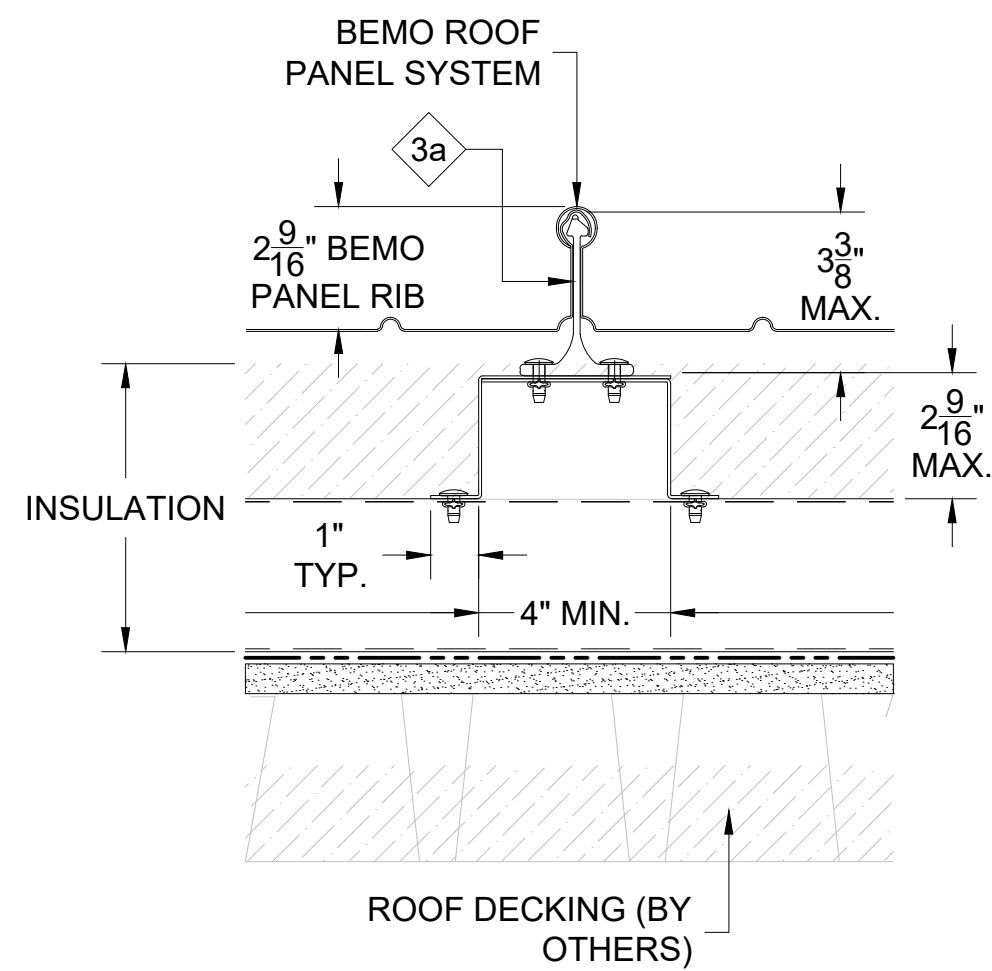
DRAWN:	D. GOSS	
CHECKED:		
PROJECT NUMBER:	####	
NO.	REVISION / ISSUE	DATE

DWG TITLE  
FIXING HALTER DETAILS

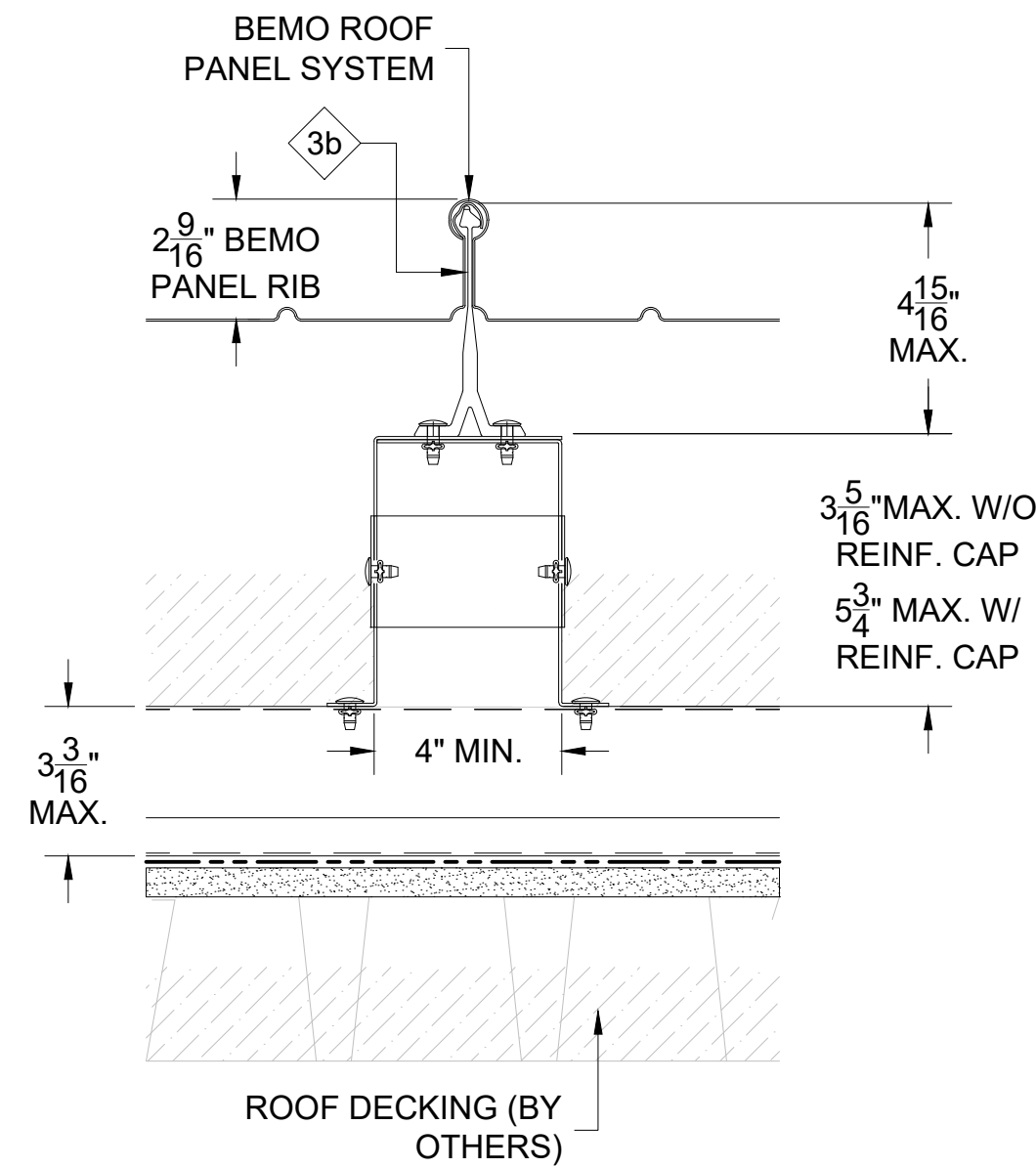
SCALE 3" = 1'-0"	DWG NO. D1
---------------------	---------------

**NOTES:**  
 1. HALTER AND FLEX SUPPORT HEIGHTS VARY; SEE ROOF PLANS FOR HEIGHTS AND LOCATIONS.  
 2. ALL FASTENERS MUST PENETRATE 3/4" MIN. THROUGH SUBSTRATE.

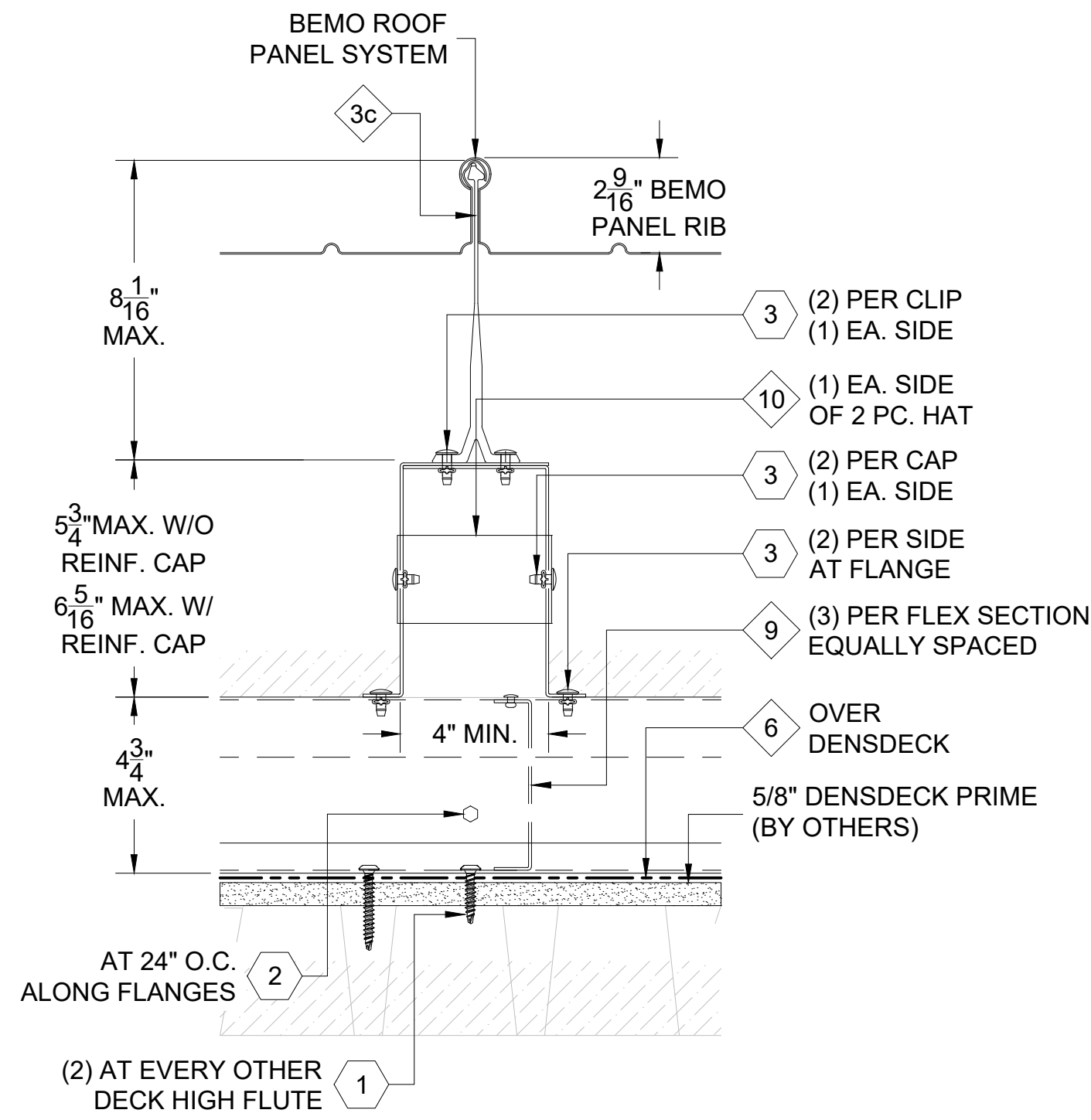
THIS DETAIL IS GENERAL IN NATURE AND WILL BE MODIFIED TO MEET JOB SPECIFIC CONDITIONS



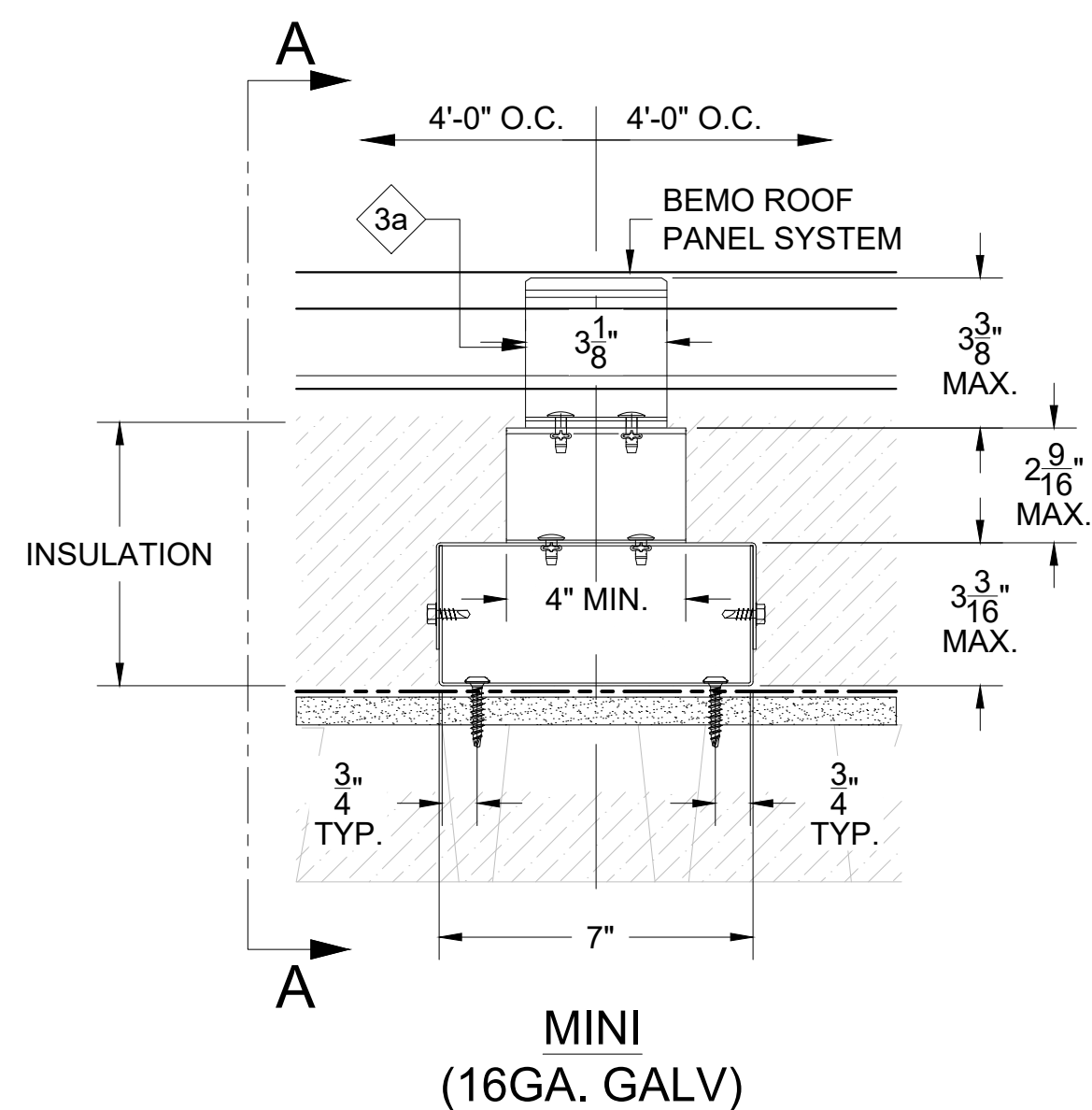
SECTION A-A



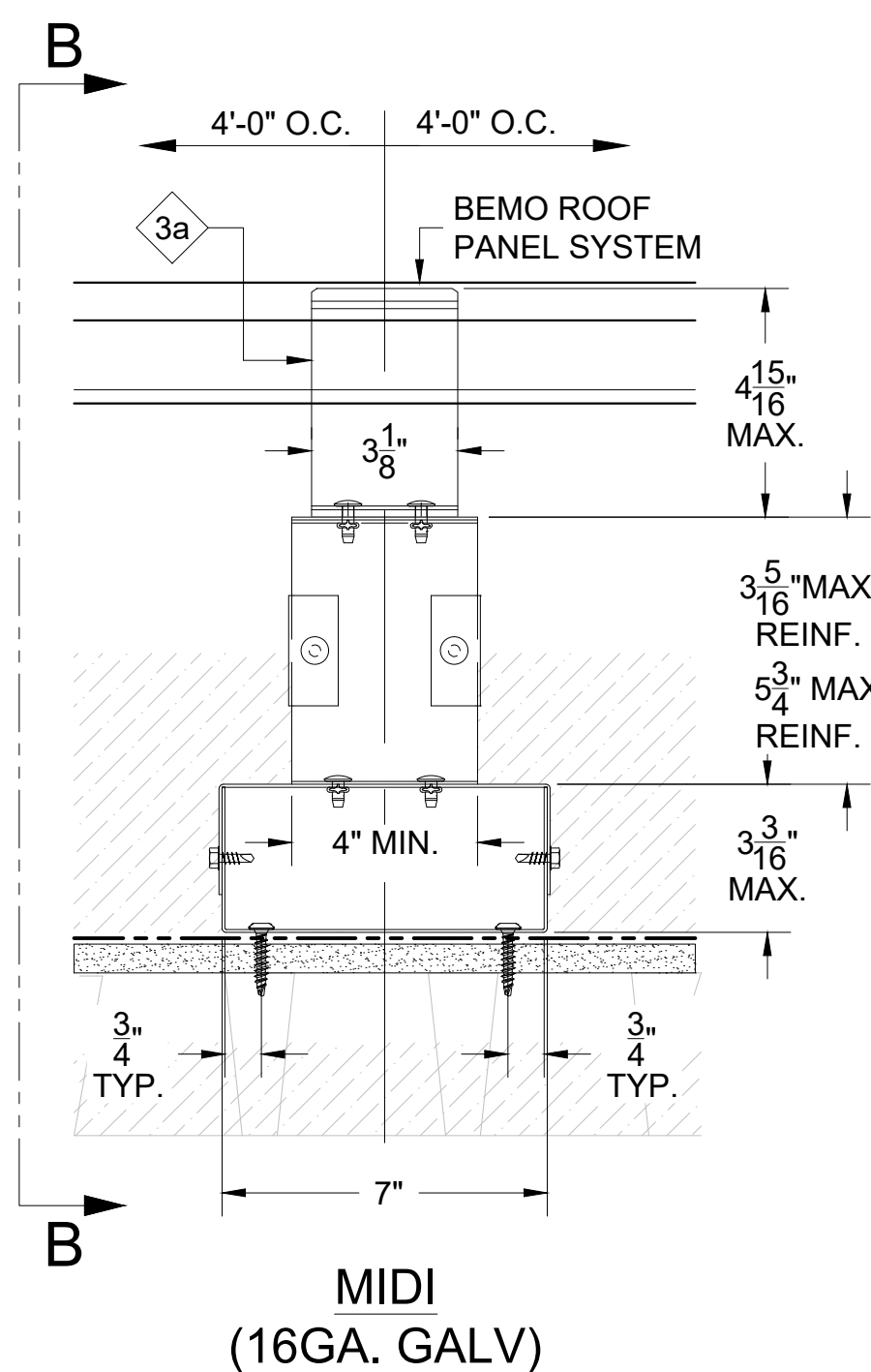
SECTION B-B



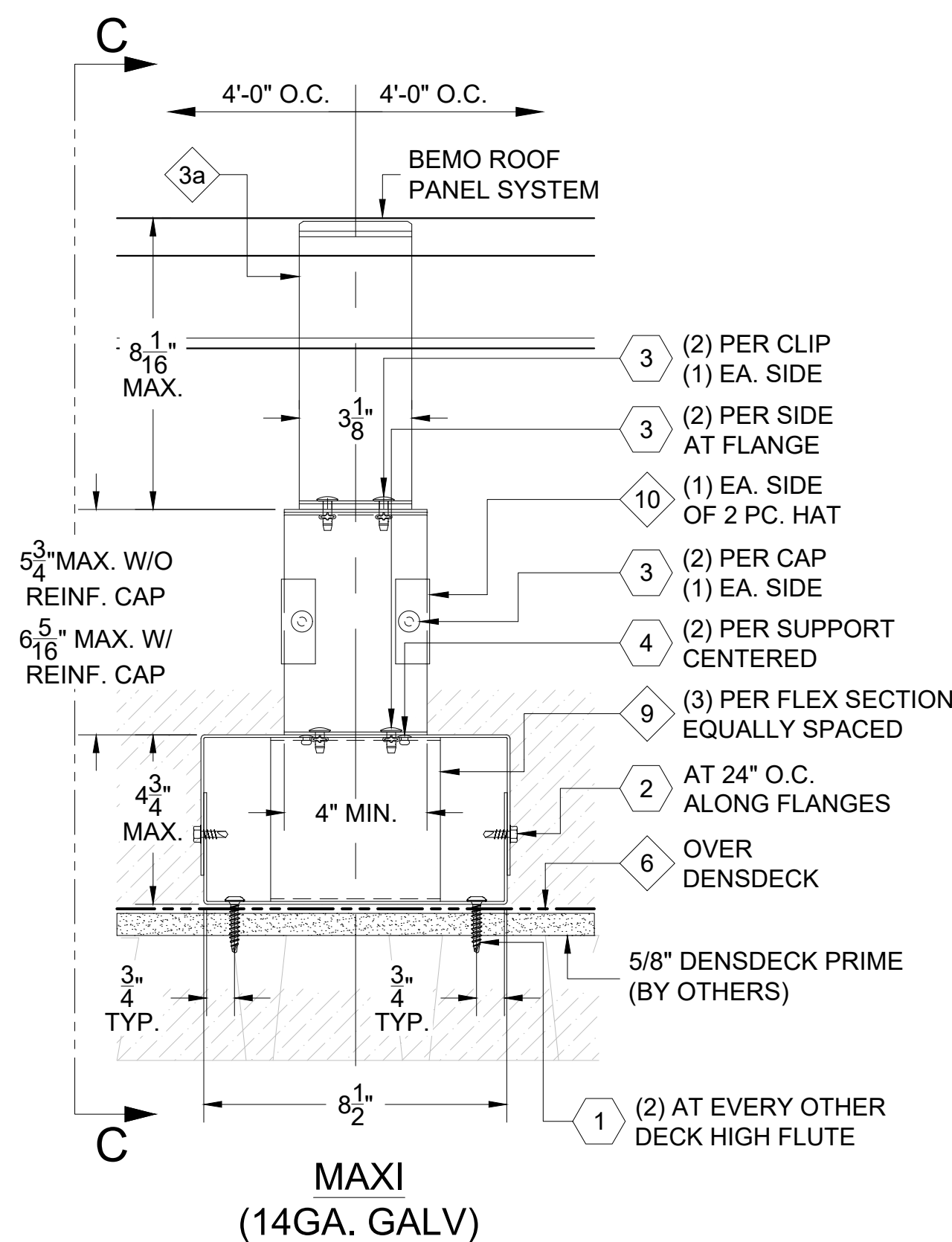
SECTION C-C



MINI (16GA. GALV)



MIDI (16GA. GALV)



MAXI (14GA. GALV)

MARK	HALTER DESCRIPTION
3a	85/80 PLOYAMIDE THERMAL HALTER
3b	125/80 PLOYAMIDE THERMAL HALTER
3c	205/80 PLOYAMIDE THERMAL HALTER

**1 BEMO FLEX SLIDING HALTER DETAILS**  
 D1 REF. ARCH. DET. -

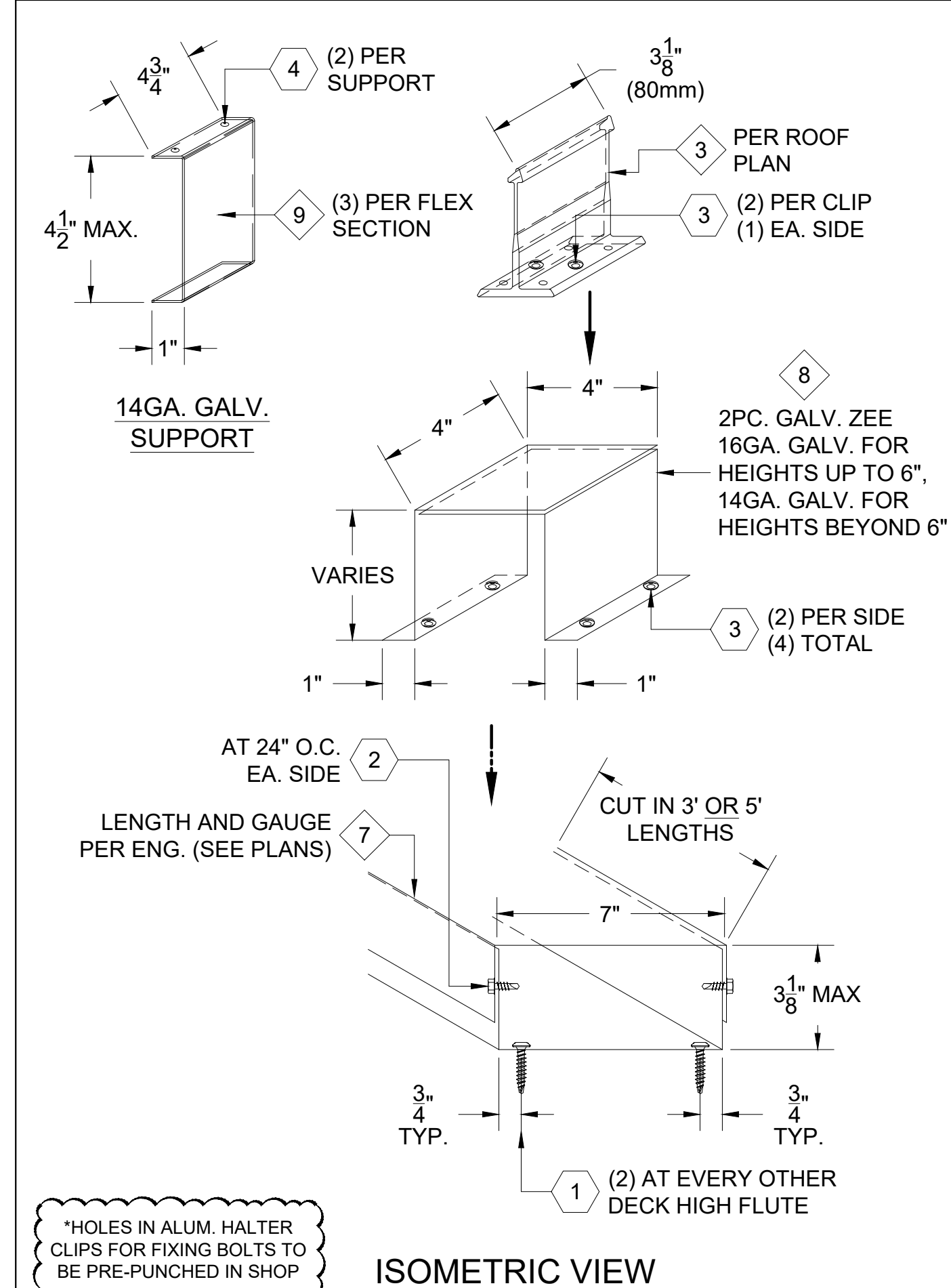
**FASTENER DESIGNATIONS**

MARK	DESCRIPTION	IMAGE
1	#14-10 x 1 1/2" DEKFAST SCREW (OR COMPARABLE)	
2	1/4"-14x 3/4" LONG HWH TEK-3 SCREW	
3	1/4"Ø BULB-TITE RIVET (W/ BONDED WASHER)	
4	3/16"Ø CLOSED END S.S. RIVET	
5	1/4"-20x 1" STAINLESS STEEL BOLT ASSEMBLY	
5a	1/4"-20x 1" HEX HEAD STAINLESS STEEL BOLT	
5b	3/4" COMB. STAINLESS STEEL AND SEALING WASHER	
5c	1/4"-20 STAINLESS STEEL LOCKING NUT	
6	1/4"-14x 1 1/2" LONG HWH TEK-3 SCREW	
7	FAS-10-4 FAB-LOK FASTENER	
8		
9		

\* (1000 HRS OF CORROSION RESISTANT COATING IN ACCORDANCE WITH ASTM B117)

**MATERIAL DESIGNATIONS**

MARK	DESCRIPTION
1	BEMO SLIDING HOOK CLIP W/ GALV. BASE
2	BEMO FIXED HOOK CLIP
3	BEMO POLYAMIDE THERMAL HALTER CLIP
4	BEMO ALUMINUM HALTER CLIP
5	BEMO HALTER CLIP THERMAL PAD
6	BEMO "40 MIL HT MEMBRANE" (3'x 65' ROLLS)
7	2 PC. GALVANIZED BASE CHANNEL (SEE DRAWINGS FOR GAUGE)
8	2 PC. GALVANIZED ZEE [HAT] SUPPORT (SEE DRAWINGS FOR GAUGE)
9	14GA. GALVANIZED "C" SHAPED SUPPORT (3 PER FLEX SECTION)
10	14GA. GALVANIZED REINFORCING CAP
11	16GA. GALVANIZED 6"x 6" BASEPLATE
12	



\*HOLES IN ALUM. HALTER CLIPS FOR FIXING BOLTS TO BE PRE-PUNCHED IN SHOP

ISOMETRIC VIEW

[NOTE: ISOMETRIC VIEW IS FOR VISUALIZATION ONLY - OBJECTS NOT TO SCALE]



**BEMO STANDARD DETAILS**  
**BEMO FLEX DETAILS**

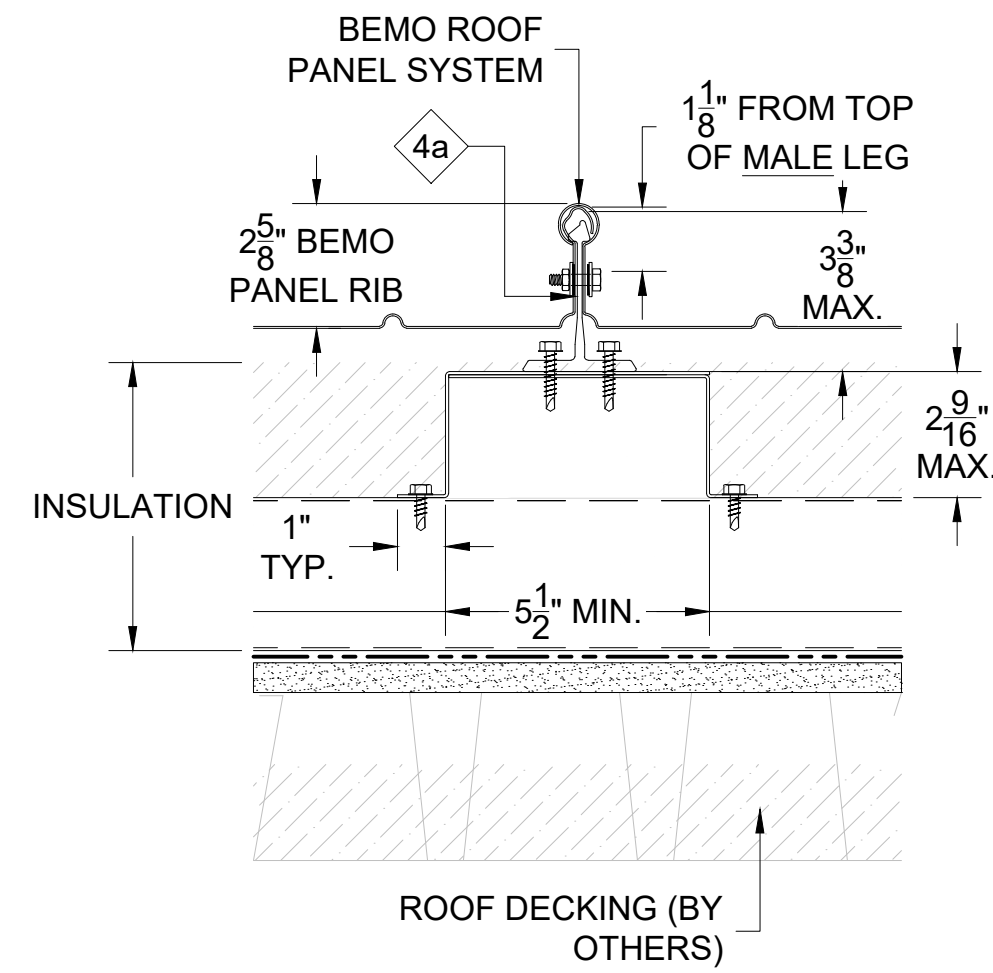
PROJECT ADDRESS \_\_\_\_\_  
 CUSTOMER NAME \_\_\_\_\_  
 ARCHITECT NAME \_\_\_\_\_

DRAWN:	D. GOSS
CHECKED:	
PROJECT NUMBER:	####
NO.	REVISION / ISSUE
	DATE

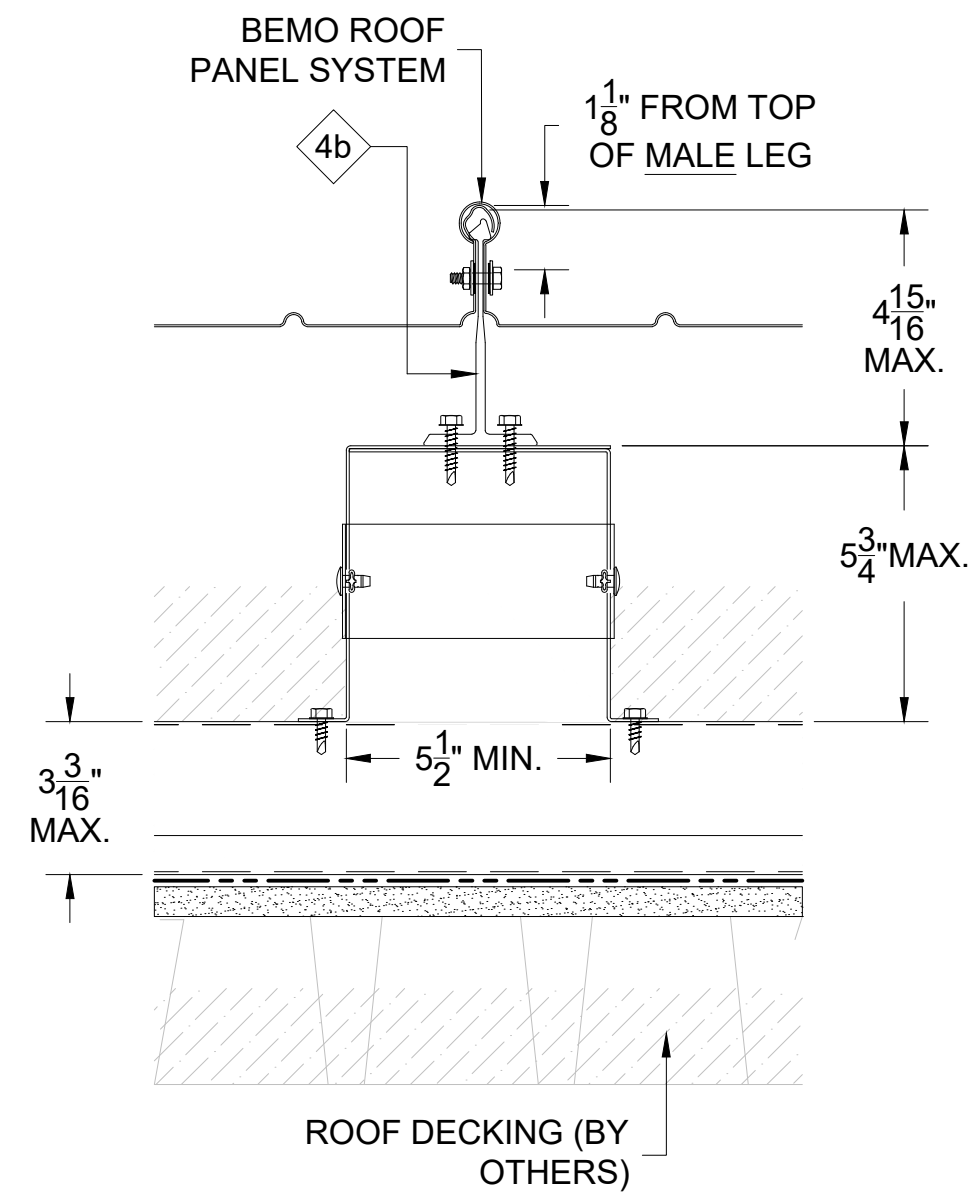
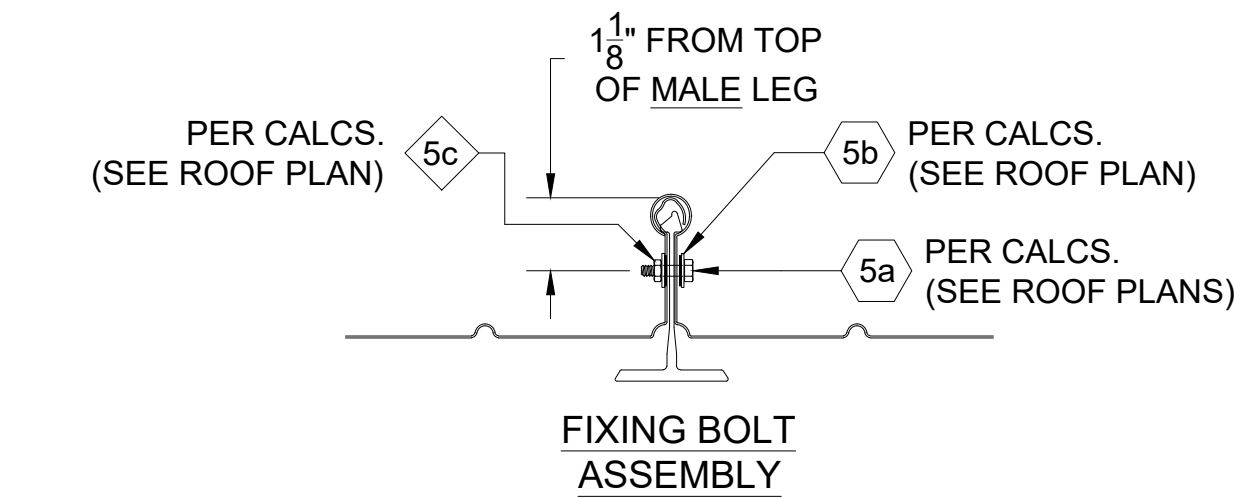
DWG TITLE	SLIDING HALTER DETAILS
SCALE	3" = 1'-0"
DWG NO.	D1

- NOTES:**
- BOLT LOCATION TO BE 1 1/8" DOWN FROM TOP OF MALE LEG; DRILL 1/4" DIA. HOLE IN MALE AND FEMALE PANEL RIBS AS PANELS ARE BEING INSTALLED.
  - LOCATION OF 'FIXED' POINT TO BE SHOWN ON ROOF PLAN; CONSULT MANUFACTURER FOR LOCATION AND REQUIRED NUMBER OF ROWS OF 'FIXED' HALTERS.
  - ALL FASTENERS MUST PENETRATE 3/4" MIN. THROUGH SUBSTRATE.

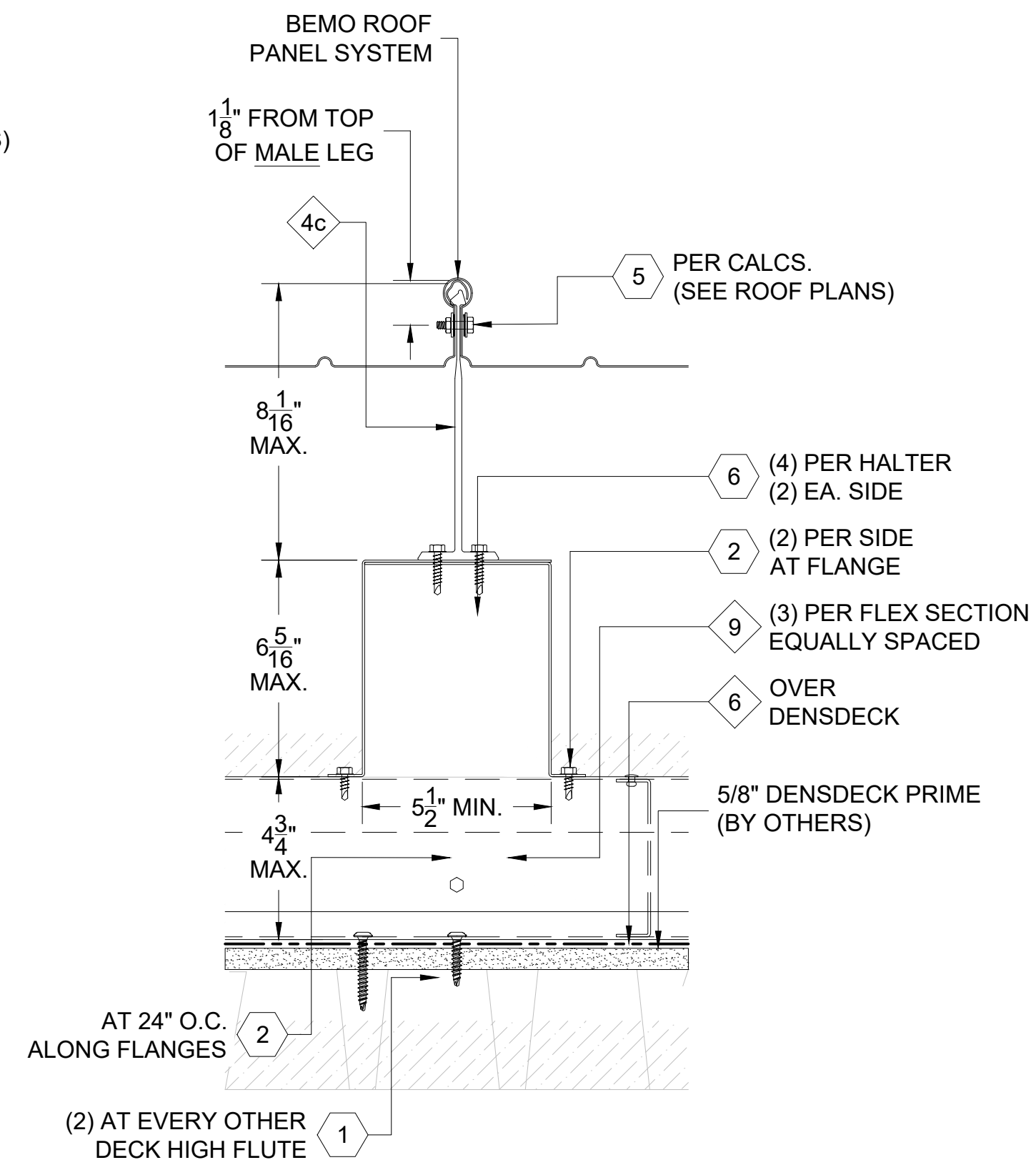
THIS DETAIL IS GENERAL IN NATURE AND WILL BE MODIFIED TO MEET JOB SPECIFIC CONDITIONS



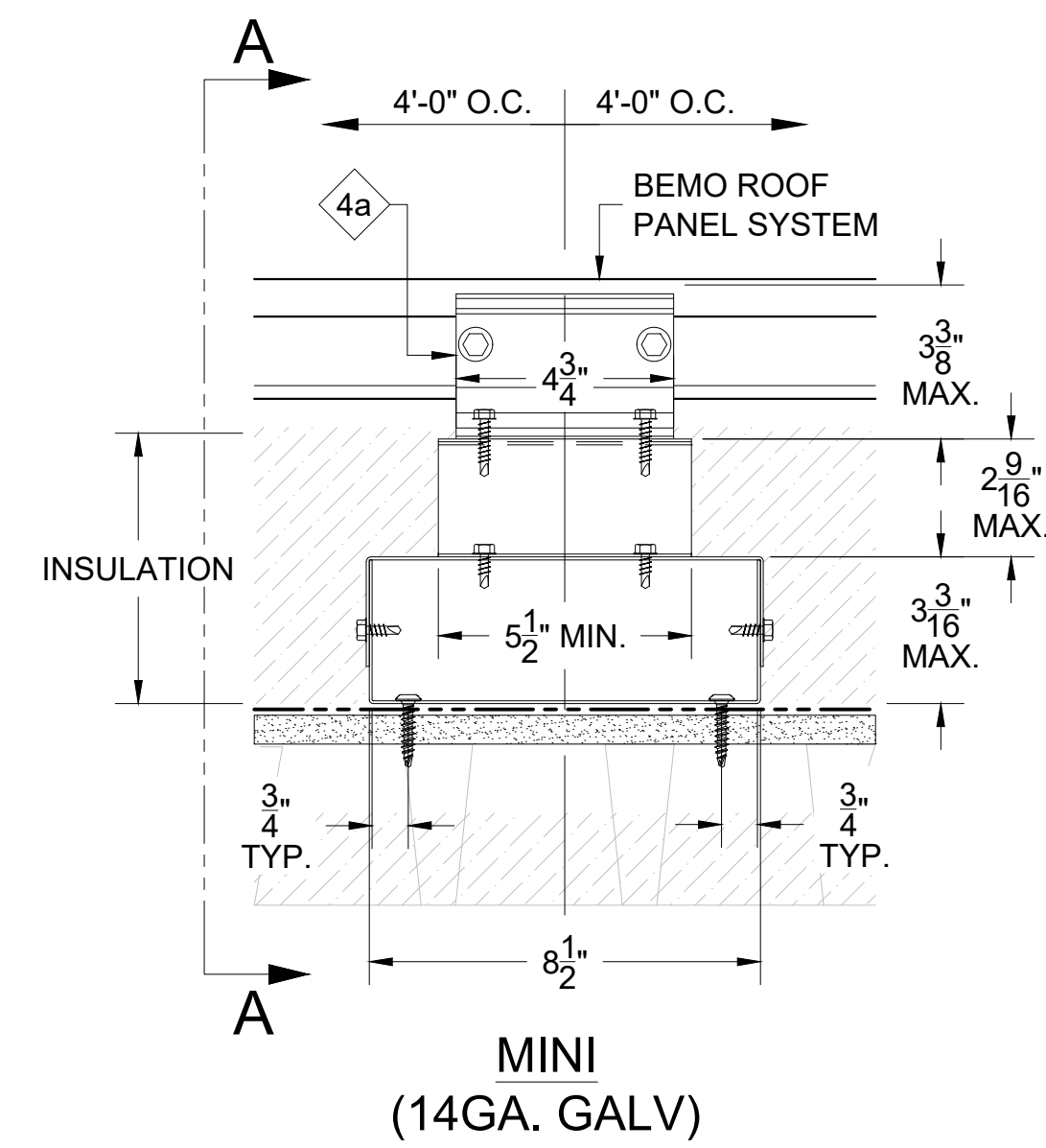
SECTION A-A



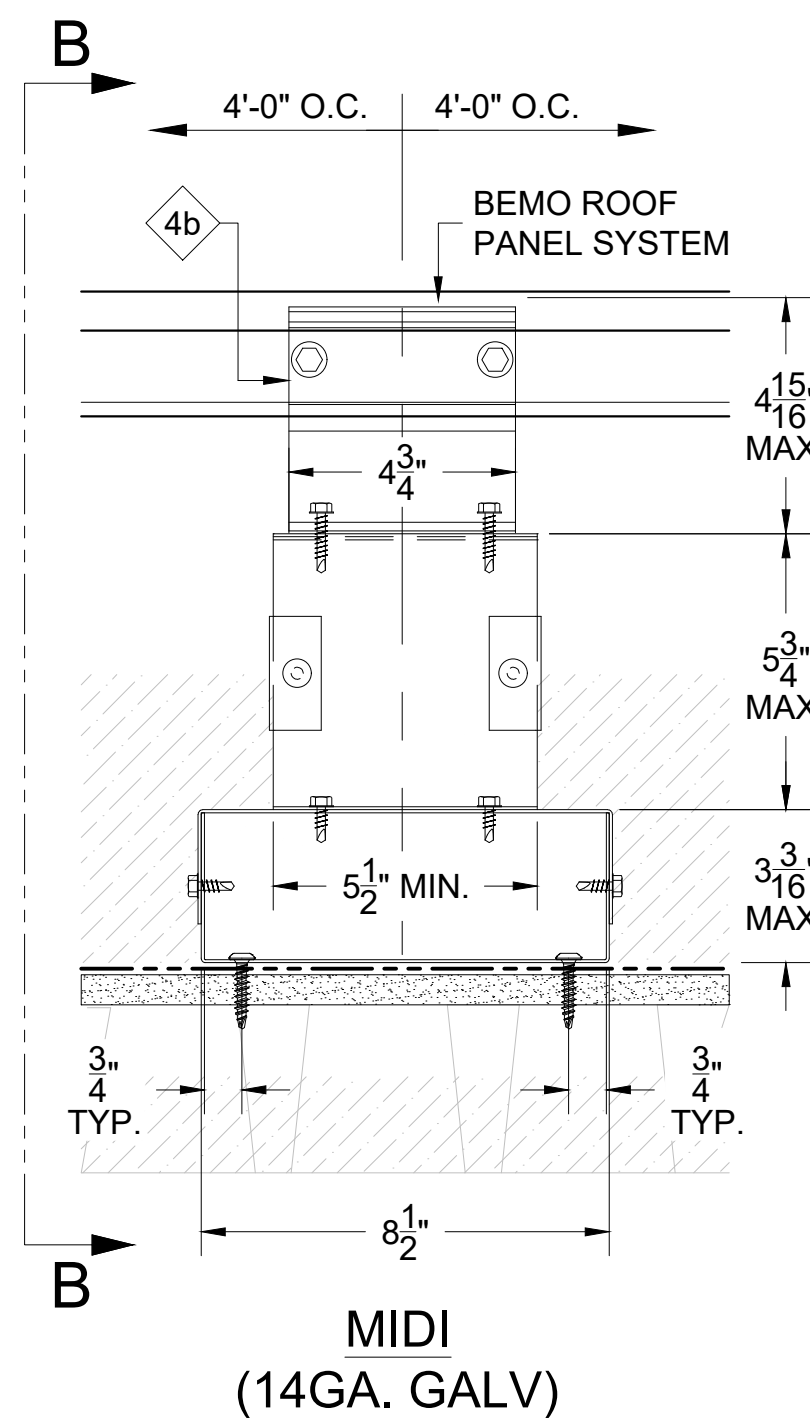
SECTION B-B



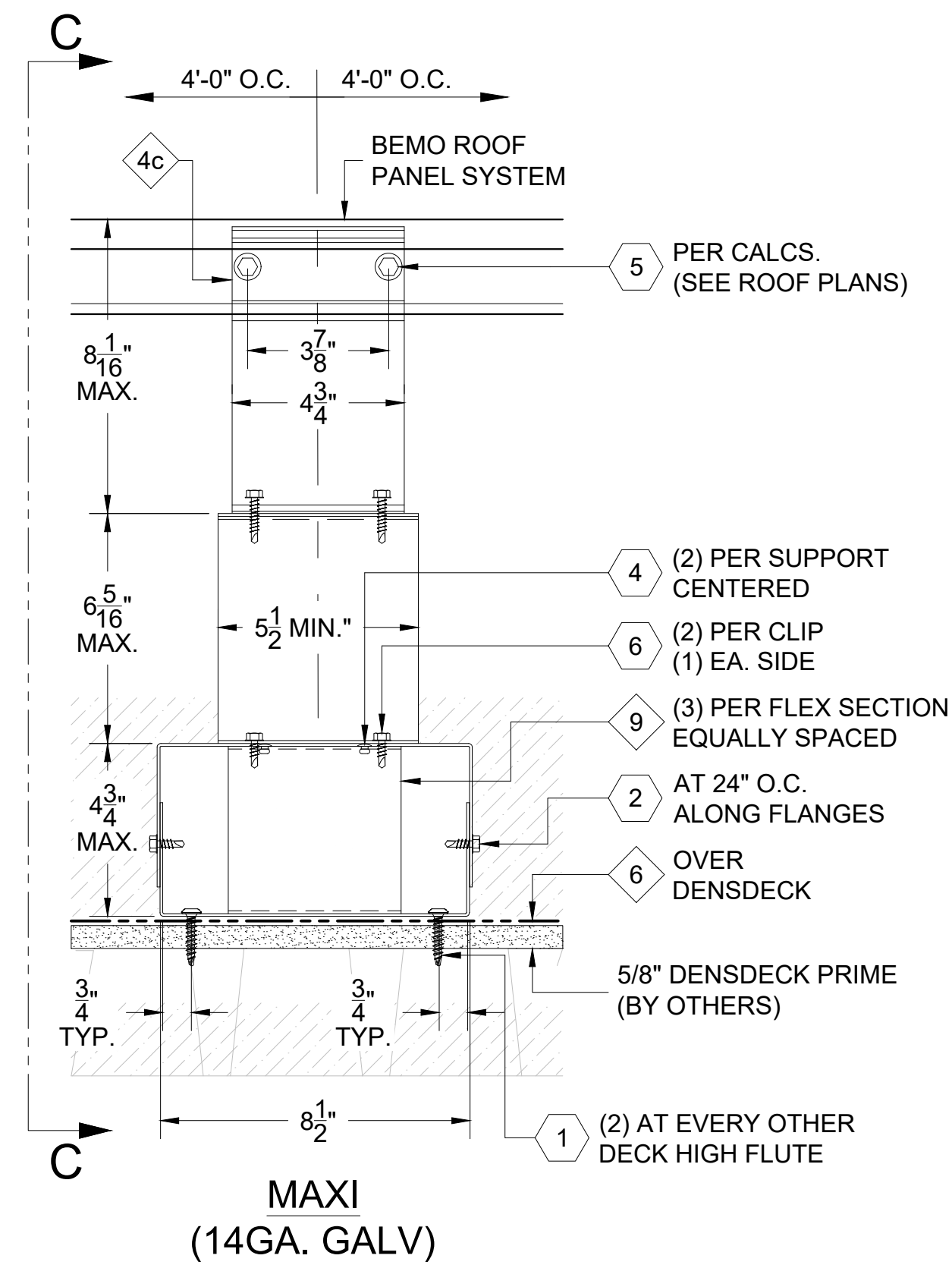
SECTION C-C



MINI  
(14GA. GALV)



MIDI  
(14GA. GALV)



MAXI  
(14GA. GALV)

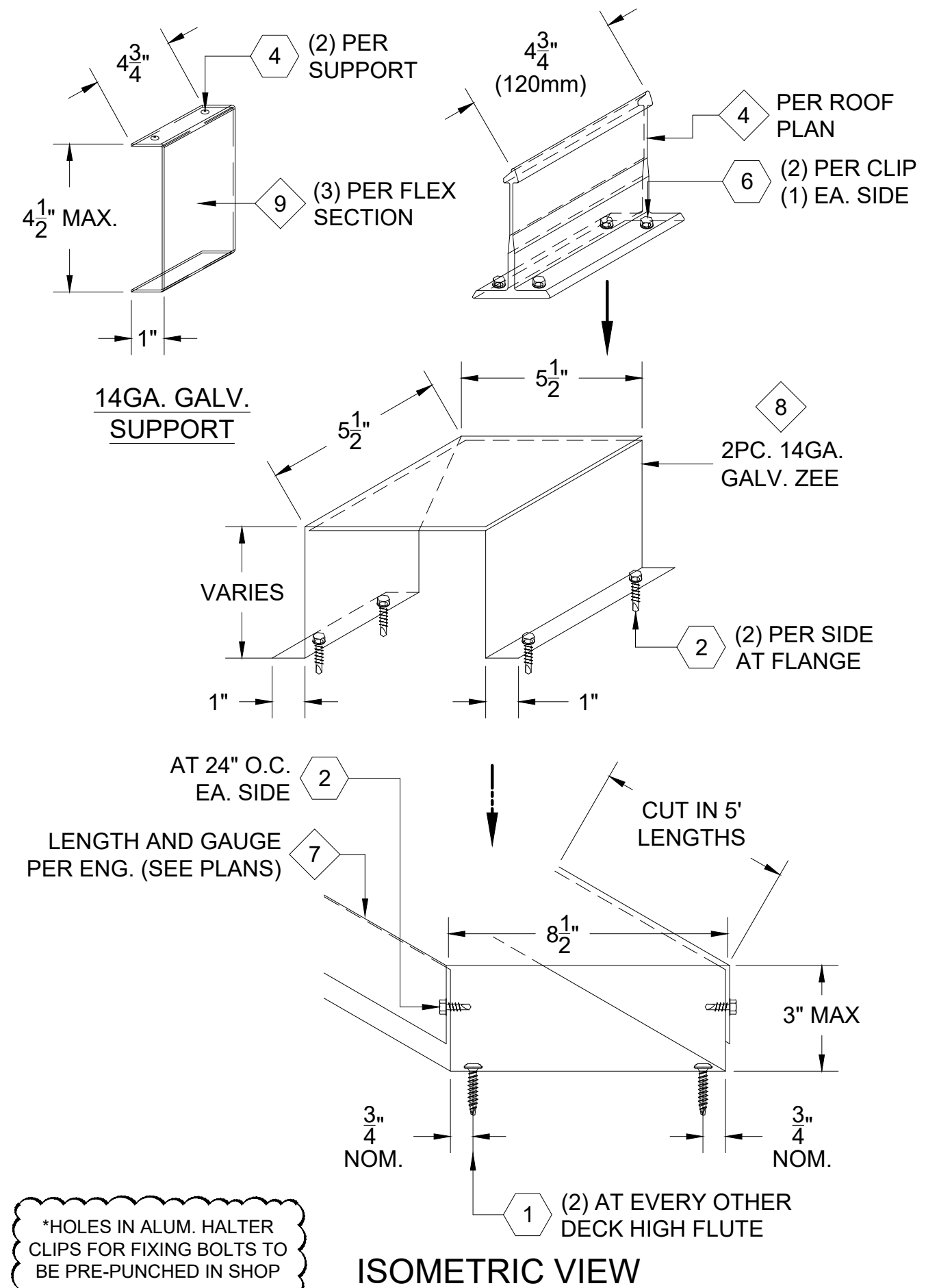
**FASTENER DESIGNATIONS**

MARK	DESCRIPTION	IMAGE
1	#14-10 x 1 1/2" DEKFAST SCREW (OR COMPARABLE)	
2	1/4"-14x 3/4" LONG HWH TEK-3 SCREW	
3	1/4"Ø BULB-TITE RIVET (W/ BONDED WASHER)	
4	3/16"Ø CLOSED END S.S. RIVET	
5	1/4"-20x 1" STAINLESS STEEL BOLT ASSEMBLY	
5a	1/4"-20x 1" HEX HEAD STAINLESS STEEL BOLT	
5b	3/4" COMB. STAINLESS STEEL AND SEALING WASHER	
5c	1/4"-20 STAINLESS STEEL LOCKING NUT	
6	1/4"-14x 1 1/2" LONG HWH TEK-3 SCREW	
7	FAS-10-4 FAB-LOK FASTENER	
8		
9		

\* (1000 HRS OF CORROSION RESISTANT COATING IN ACCORDANCE WITH ASTM B117)

**MATERIAL DESIGNATIONS**

MARK	DESCRIPTION
1	BEMO SLIDING HOOK CLIP W/ GALV. BASE
2	BEMO FIXED HOOK CLIP
3	BEMO POLYAMIDE THERMAL HALTER CLIP
4	BEMO ALUMINUM HALTER CLIP
5	BEMO HALTER CLIP THERMAL PAD
6	BEMO "40 MIL HT MEMBRANE" (3'x 65' ROLLS)
7	2 PC. GALVANIZED BASE CHANNEL (SEE DRAWINGS FOR GAUGE)
8	2 PC. GALVANIZED ZEE [HAT] SUPPORT (SEE DRAWINGS FOR GAUGE)
9	14GA. GALVANIZED "C" SHAPED SUPPORT (3 PER FLEX SECTION)
10	14GA. GALVANIZED REINFORCING CAP
11	16GA. GALVANIZED 6"x 6" BASEPLATE
12	



\*HOLES IN ALUM. HALTER CLIPS FOR FIXING BOLTS TO BE PRE-PUNCHED IN SHOP

[NOTE: ISOMETRIC VIEW IS FOR VISUALIZATION ONLY - OBJECTS NOT TO SCALE]

MARK	HALTER DESCRIPTION
4a	85/80 ALUMINUM HALTER
4b	125/80 ALUMINUM HALTER
4c	205/80 ALUMINUM HALTER

1 BEMO FLEX FIXED HALTER DETAILS  
D1 REF. ARCH. DET. -



BEMO STANDARD DETAILS  
BEMO FLEX DETAILS

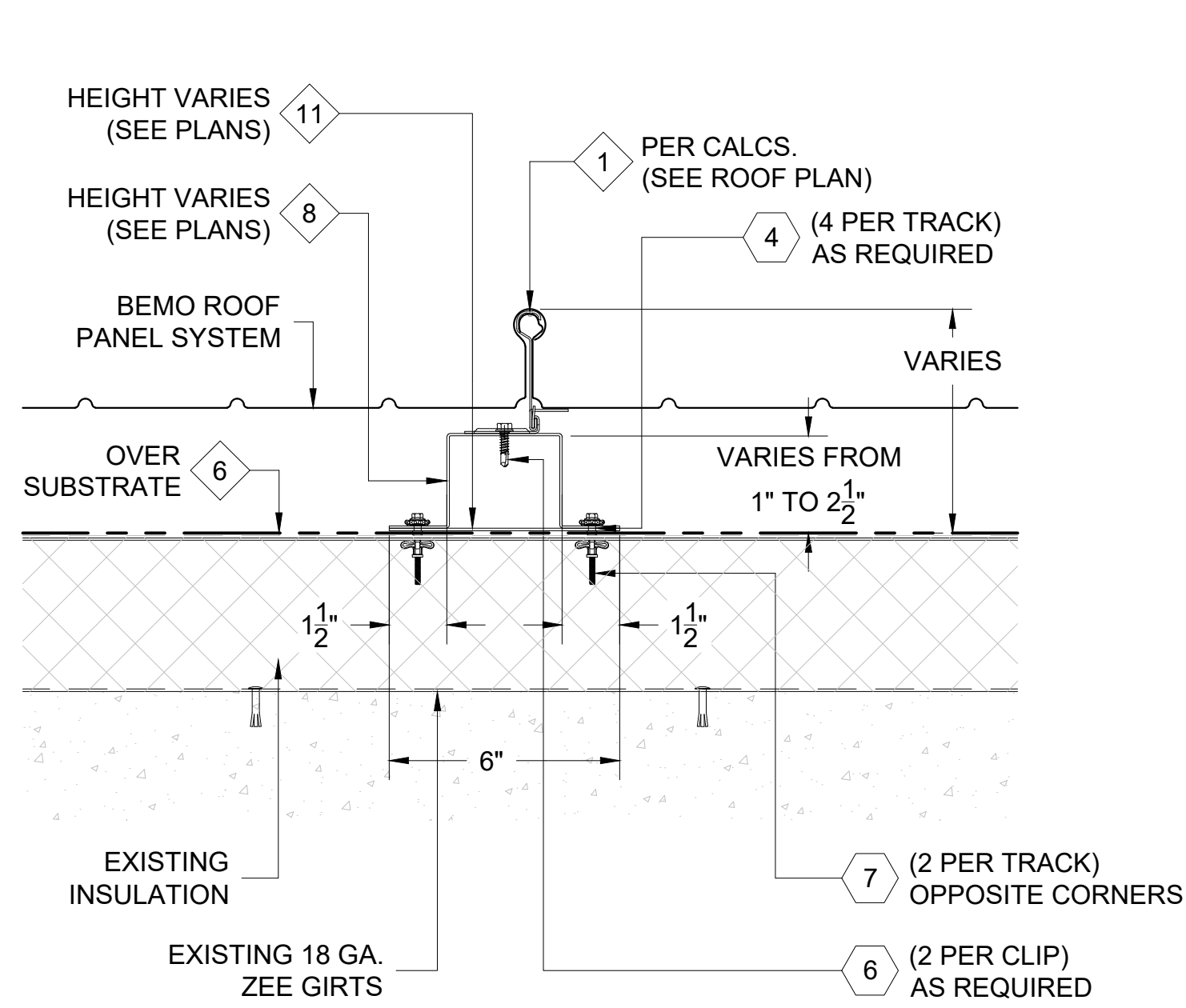
PROJECT ADDRESS  
CUSTOMER NAME  
ARCHITECT NAME

DRAWN:	D. GOSS	
CHECKED:		
PROJECT NUMBER:	####	
NO.	REVISION / ISSUE	DATE

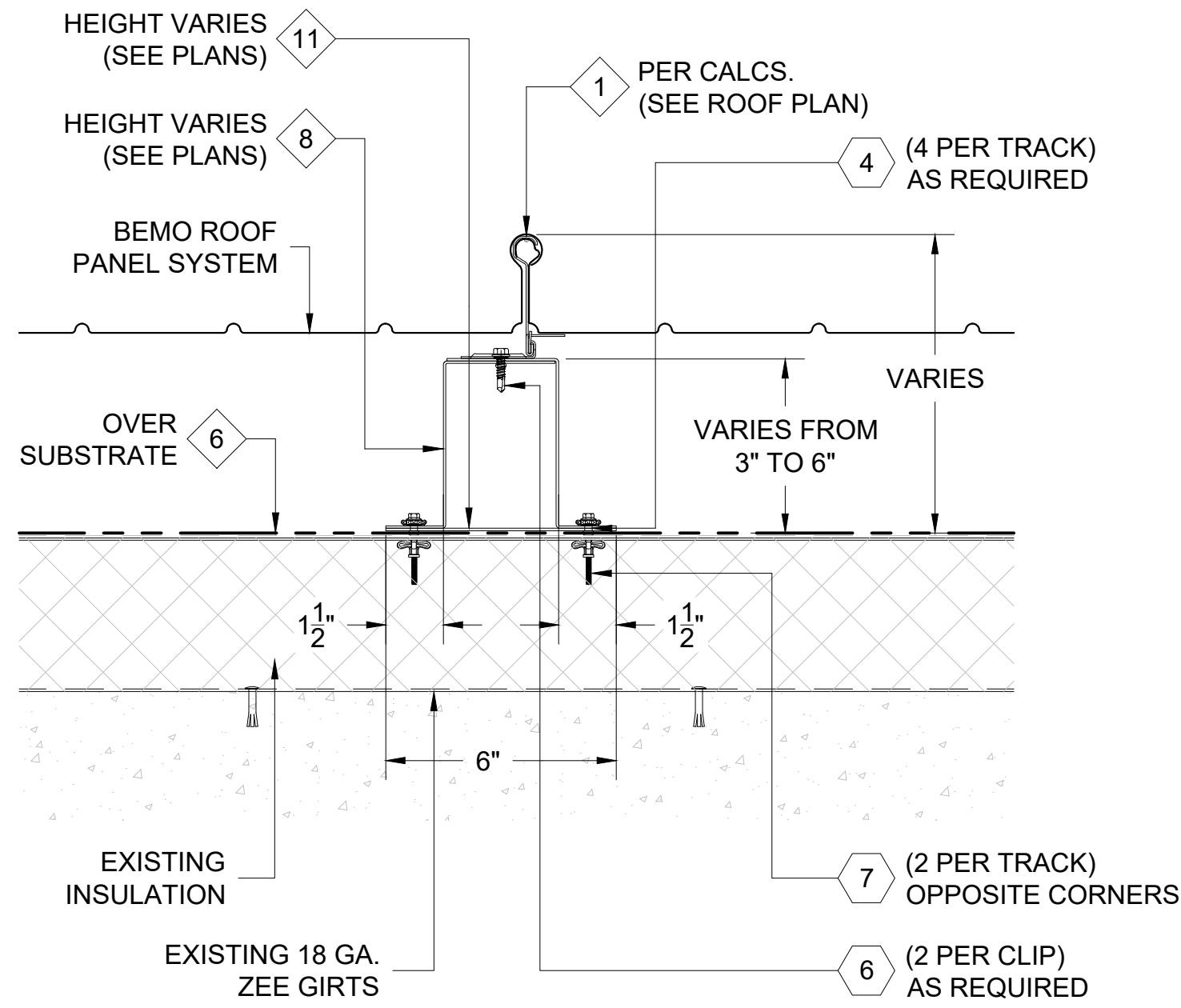
DWG TITLE	FIXING HALTER DETAILS
SCALE	3" = 1'-0"
DWG NO.	D1

NOTES:  
 1. HALTER AND FLEX SUPPORT HEIGHTS VARY; SEE ROOF PLANS FOR HEIGHTS AND LOCATIONS.  
 2. ALL FASTENERS MUST PENETRATE 3/4" MIN. THROUGH SUBSTRATE.

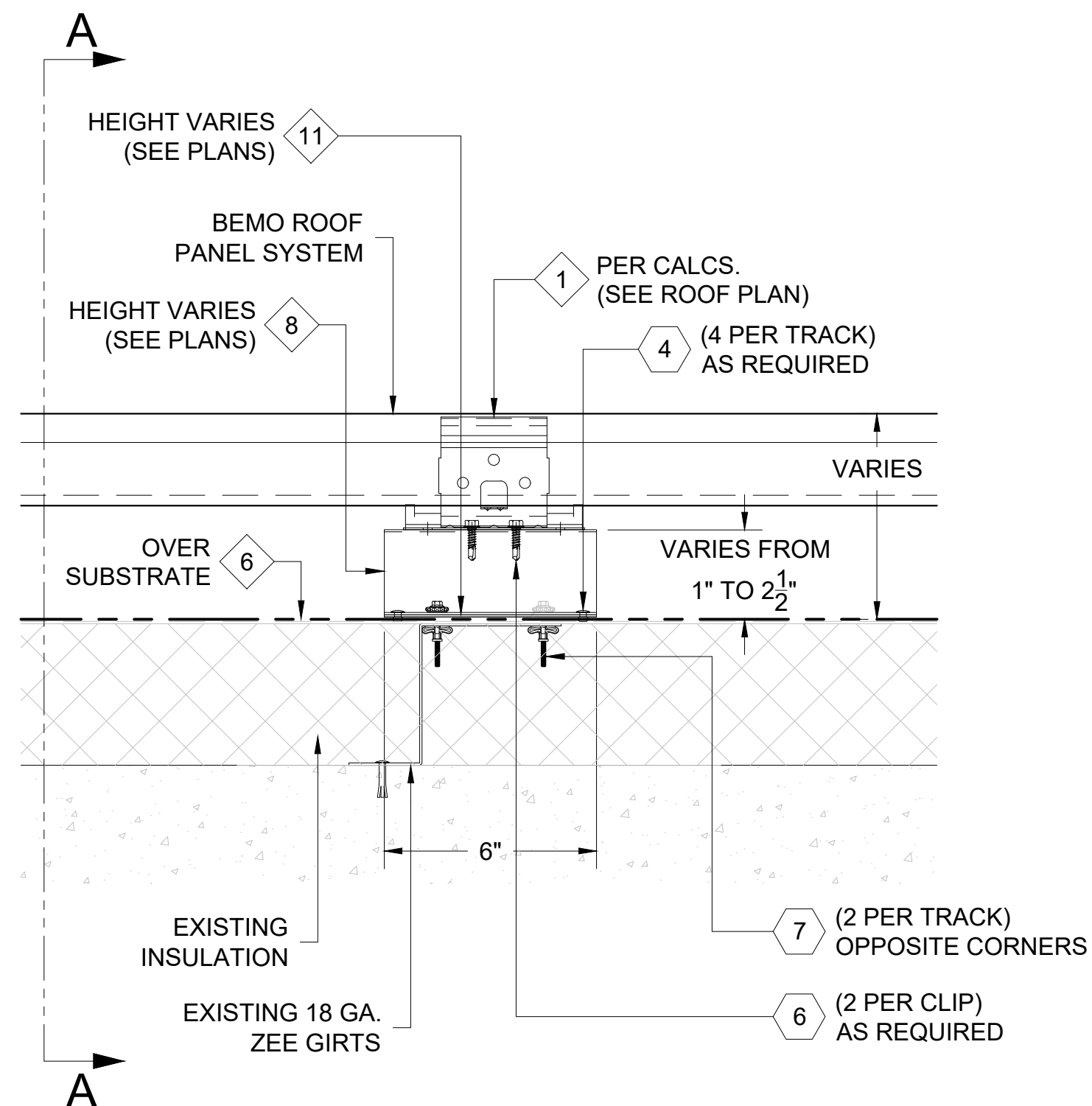
THIS DETAIL IS GENERAL IN NATURE AND WILL BE MODIFIED TO MEET JOB SPECIFIC CONDITIONS



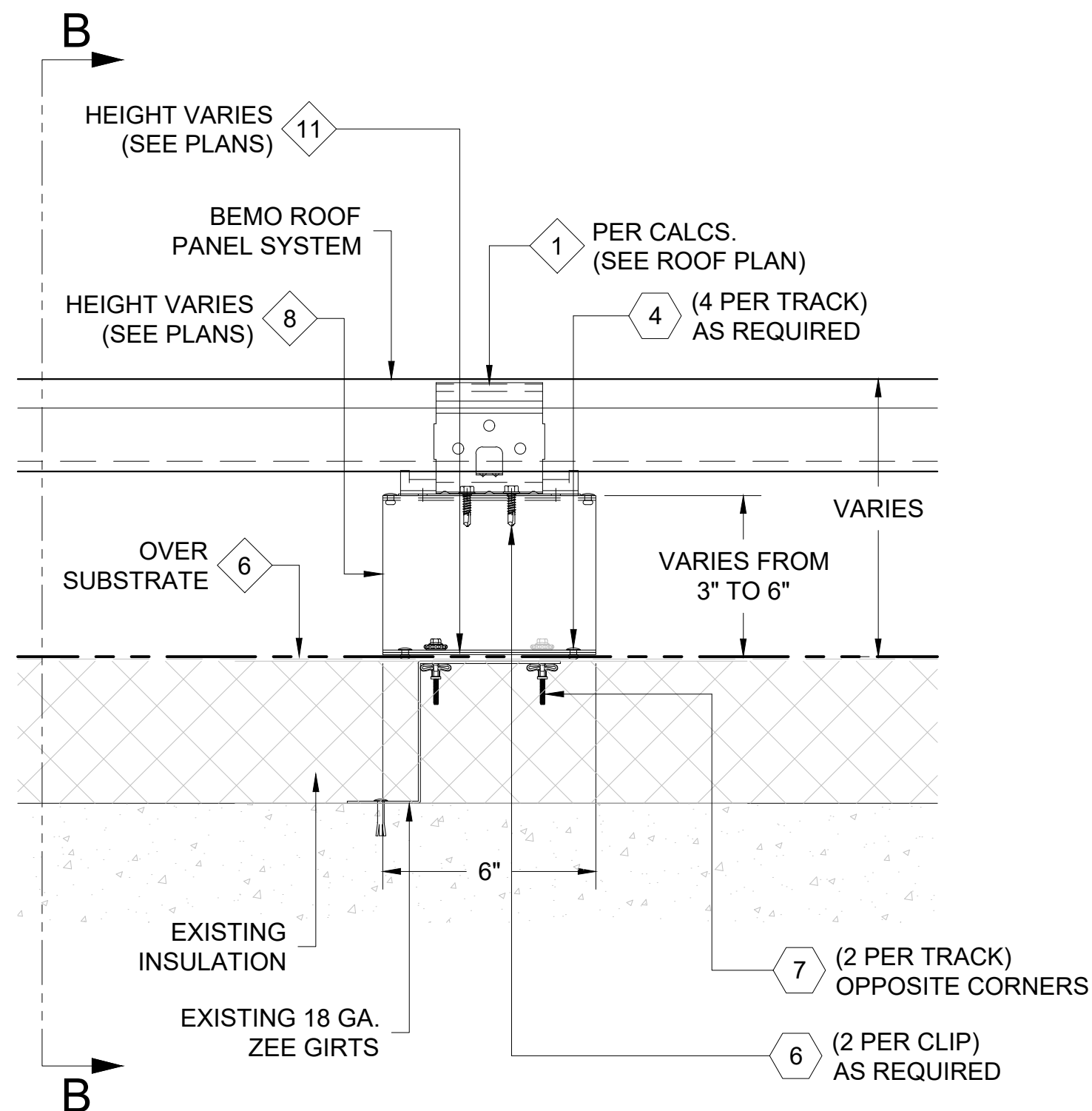
SECTION A-A



SECTION B-B



A



B

1 BEMO MODIFIED FLEX SLIDING CLIP DETAILS  
 D1 REF. ARCH. DET. -

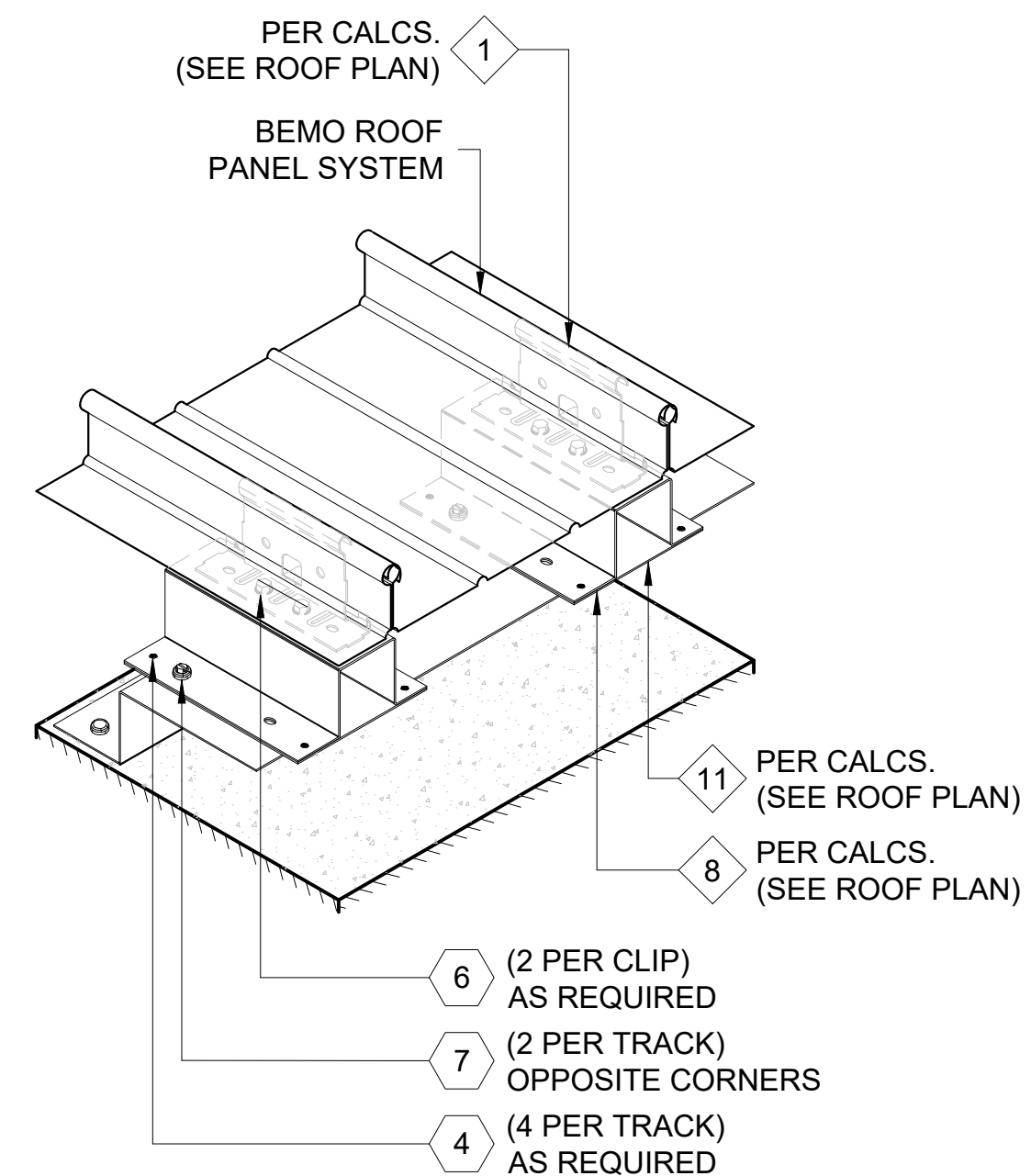
FASTENER DESIGNATIONS

MARK	DESCRIPTION	IMAGE
1	#14-10 x 1 1/2" DEKFAST SCREW (OR COMPARABLE)	
2	1/4"-14x 3/4" LONG HWH TEK-3 SCREW	
3	1/4"Ø BULB-TITE RIVET (W/ BONDED WASHER)	
4	3/16"Ø CLOSED END S.S. RIVET	
5	1/4"-20x 1" STAINLESS STEEL BOLT ASSEMBLY	
5a	1/4"-20x 1" HEX HEAD STAINLESS STEEL BOLT	
5b	3/4" COMB. STAINLESS STEEL AND SEALING WASHER	
5c	1/4"-20 STAINLESS STEEL LOCKING NUT	
6	1/4"-14x 1 1/2" LONG HWH TEK-3 SCREW	
7	FAS-10-4 FAB-LOK FASTENER	
8		
9		

\*(1000 HRS OF CORROSION RESISTANT COATING IN ACCORDANCE WITH ASTM B117)

MATERIAL DESIGNATIONS

MARK	DESCRIPTION
1	BEMO SLIDING HOOK CLIP W/ GALV. BASE
2	BEMO FIXED HOOK CLIP
3	BEMO POLYAMIDE THERMAL HALTER CLIP
4	BEMO ALUMINUM HALTER CLIP
5	BEMO HALTER CLIP THERMAL PAD
6	BEMO "40 MIL HT MEMBRANE" (3'x 65' ROLLS)
7	2 PC. GALVANIZED BASE CHANNEL (SEE DRAWINGS FOR GAUGE)
8	2 PC. GALVANIZED ZEE [HAT] SUPPORT (SEE DRAWINGS FOR GAUGE)
9	14GA. GALVANIZED "C" SHAPED SUPPORT (3 PER FLEX SECTION)
10	14GA. GALVANIZED REINFORCING CAP
11	16GA. GALVANIZED 6"x 6" BASEPLATE
12	



ISOMETRIC VIEW

[NOTE: ISOMETRIC VIEW IS FOR VISUALIZATION ONLY - OBJECTS NOT TO SCALE]



BEMO STANDARD DETAILS  
 BEMO FLEX DETAILS  
 PROJECT ADDRESS  
 CUSTOMER NAME  
 ARCHITECT NAME

DRAWN:	D. GOSS	
CHECKED:		
PROJECT NUMBER:	####	
NO.	REVISION / ISSUE	DATE

DWG TITLE  
 SLIDING HALTER DETAILS

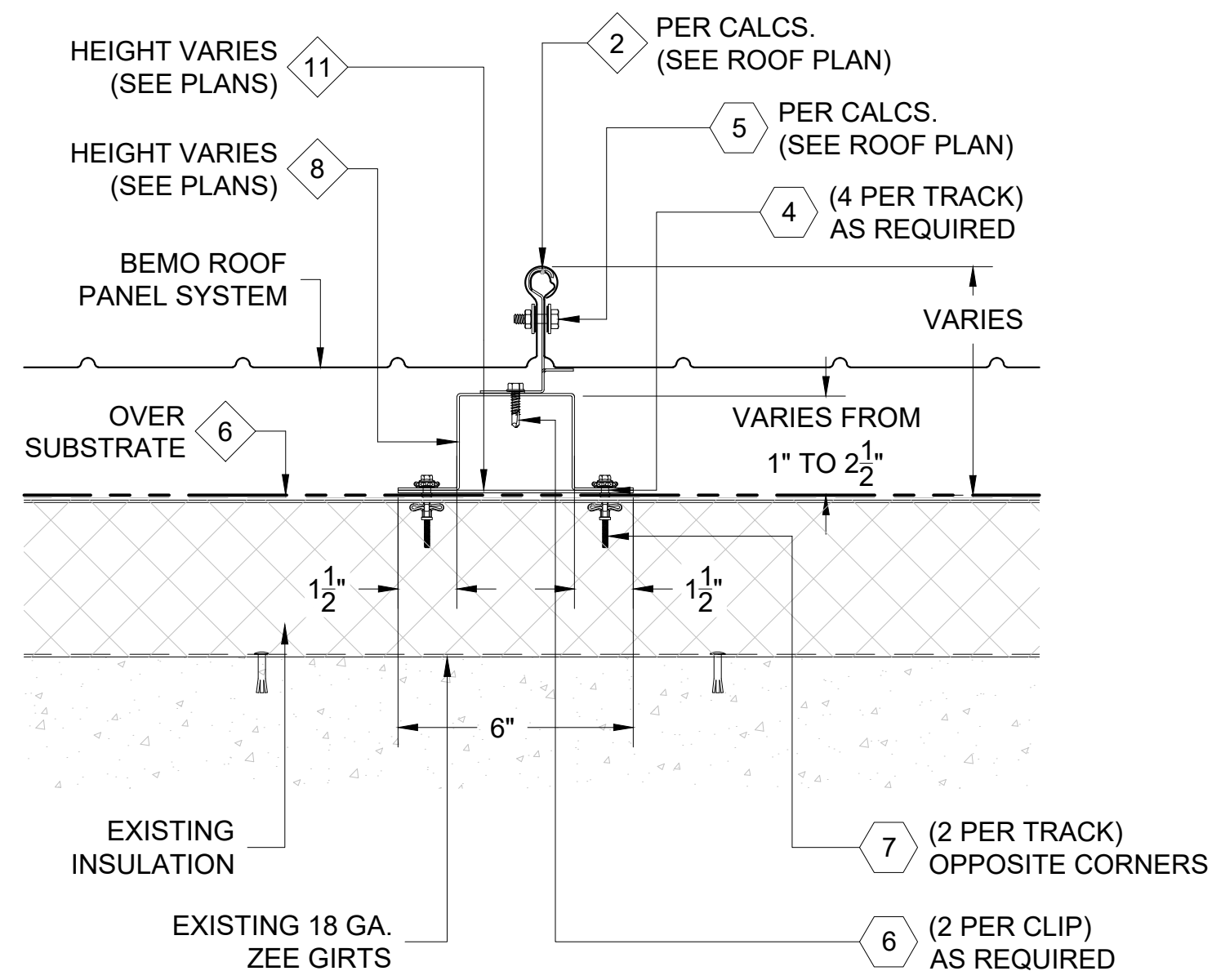
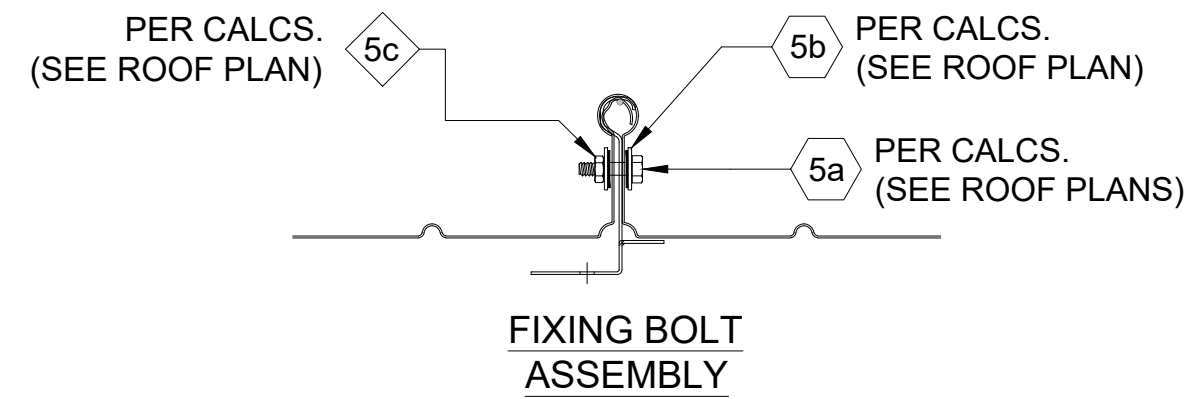
SCALE  
 3" = 1'-0"  
 REV

DWG NO.  
 D1

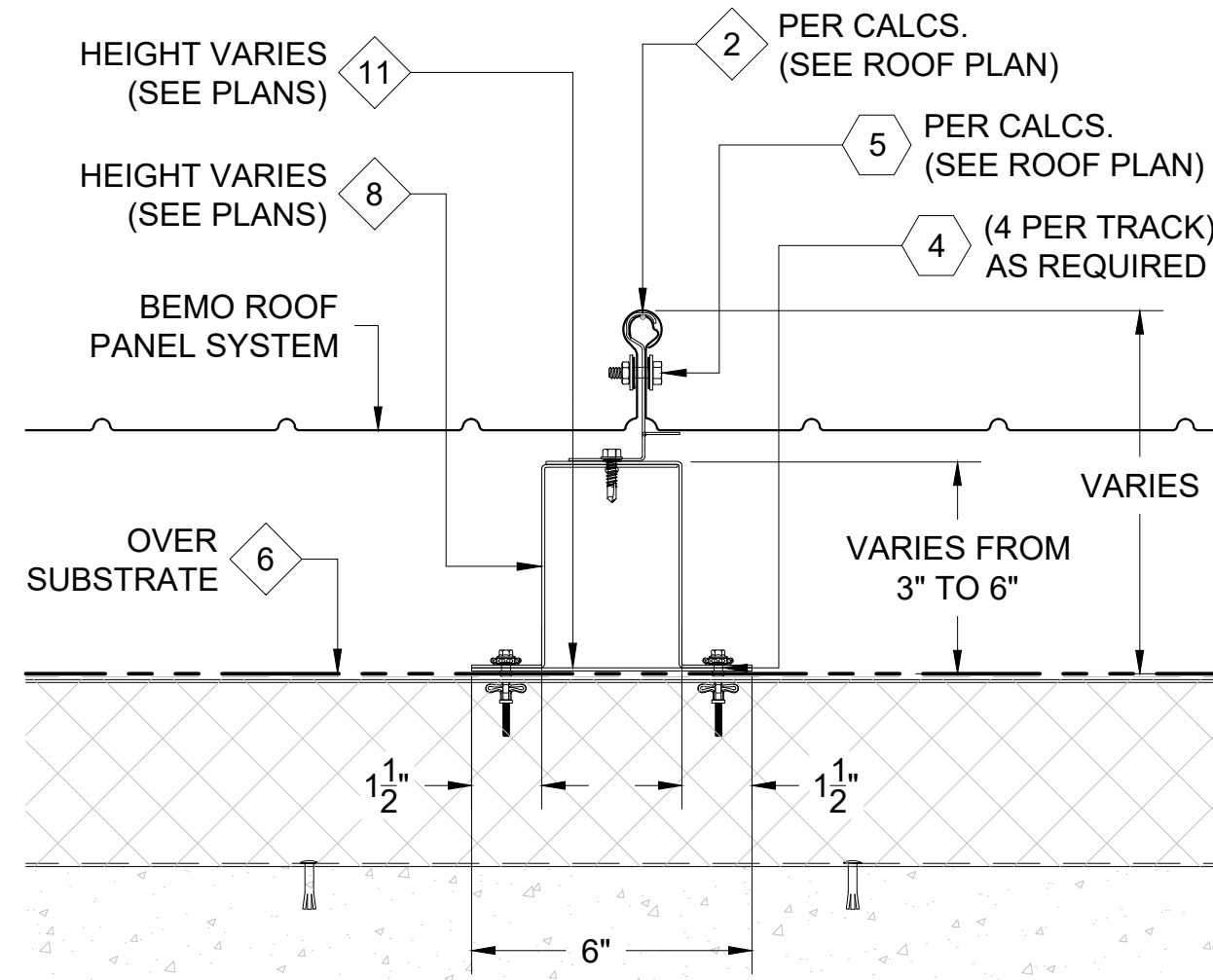
**NOTES:**

1. BOLT LOCATION IS DETERMINED BY PRE-PUNCHED HOLE IN FIXED CLIP STEM; DRILL 1/4" DIA. HOLE IN MALE PANEL RIB AT PRE-PUNCHED HOLE IN CLIP AS PANELS ARE BEING INSTALLED.
2. LOCATION OF 'FIXED' POINT TO BE SHOWN ON ROOF PLAN; CONSULT MANUFACTURER FOR LOCATION AND REQUIRED NUMBER OF ROWS OF 'FIXED' CLIPS.
3. ALL FASTENERS MUST PENETRATE 3/4" MIN. THROUGH SUBSTRATE.

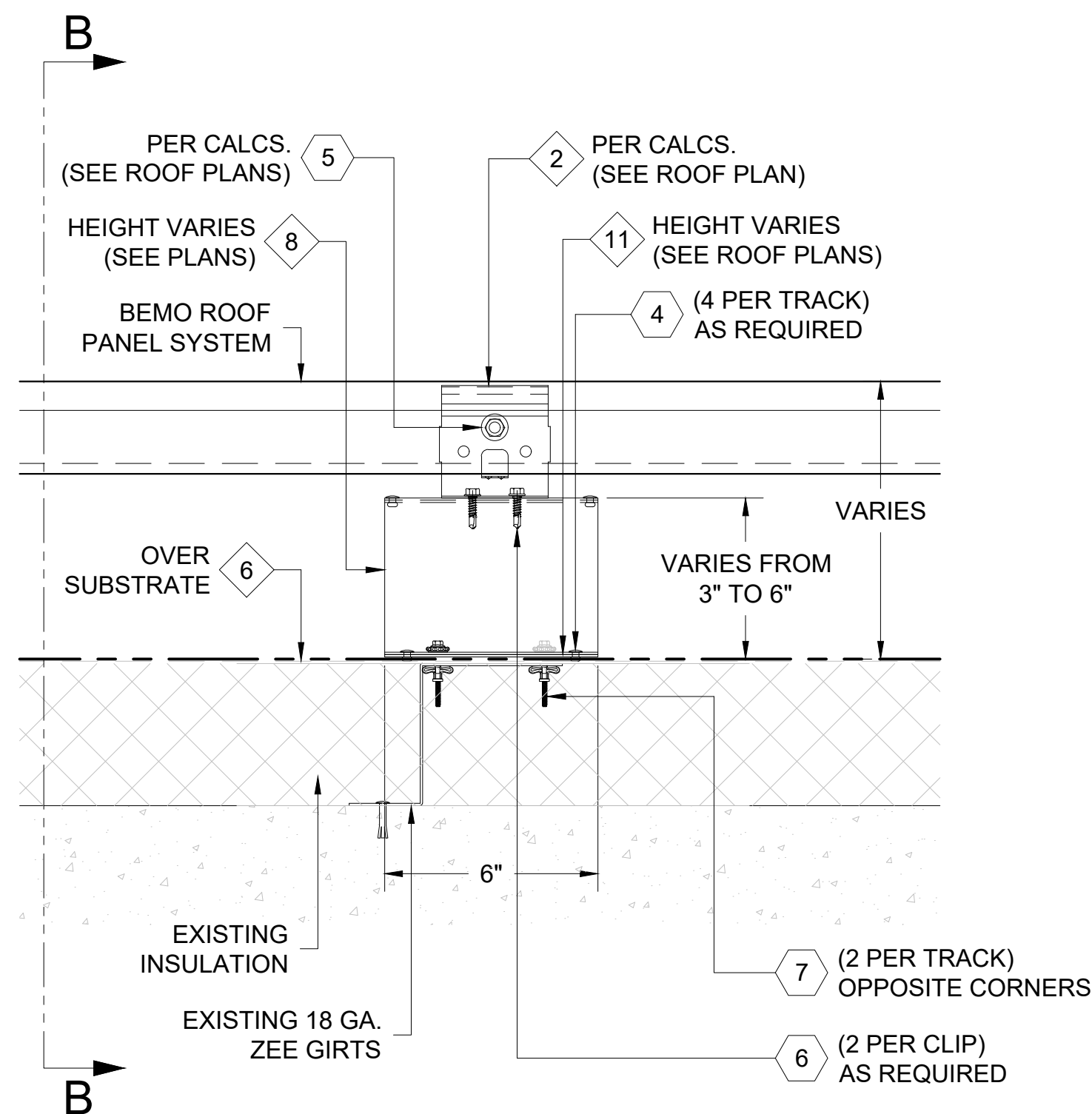
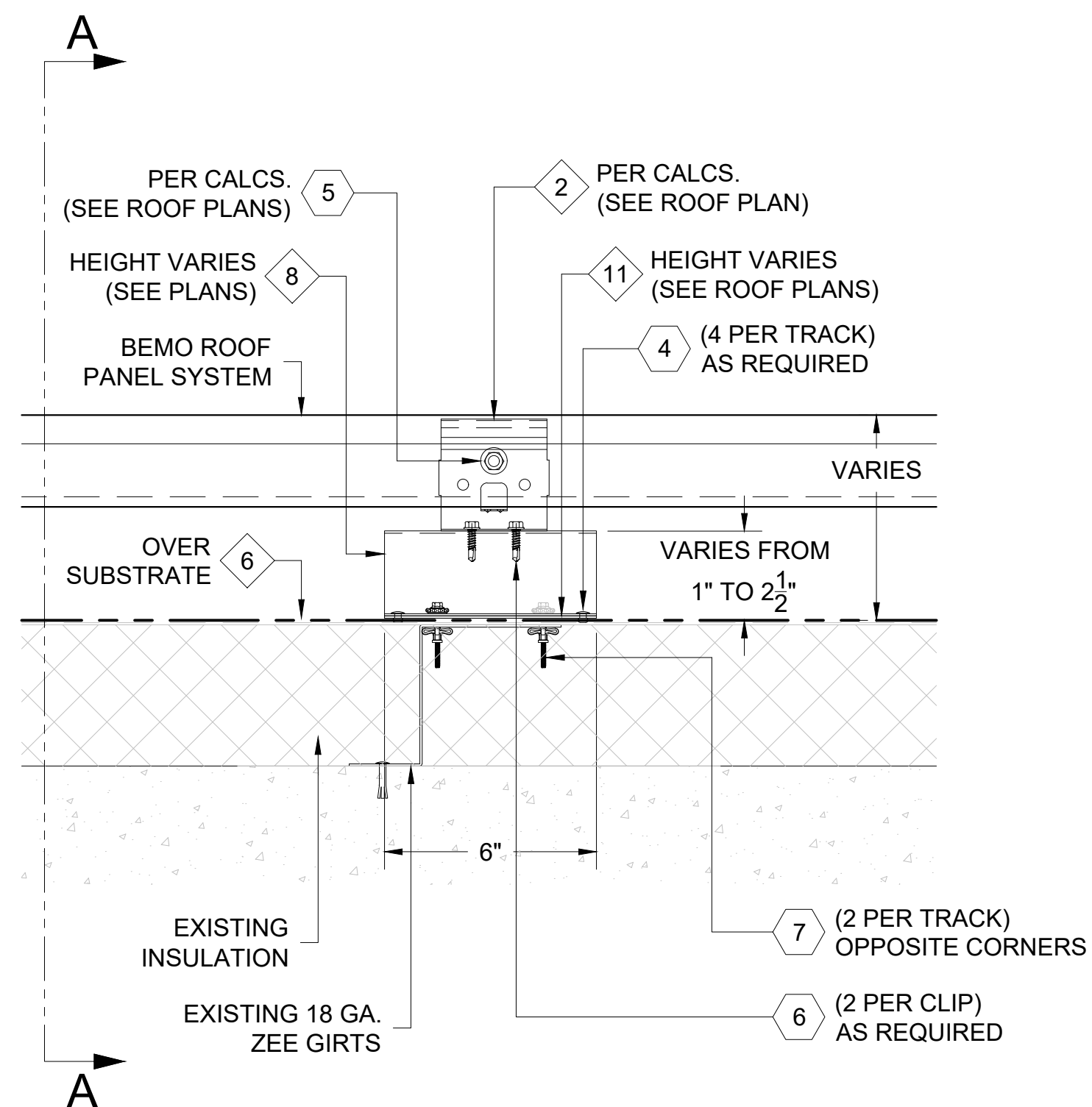
THIS DETAIL IS GENERAL IN NATURE AND WILL BE MODIFIED TO MEET JOB SPECIFIC CONDITIONS



**SECTION A-A**



**SECTION B-B**



**1 BEMO MODIFIED FLEX FIXED HALTER DETAILS**  
D1 REF. ARCH. DET. -

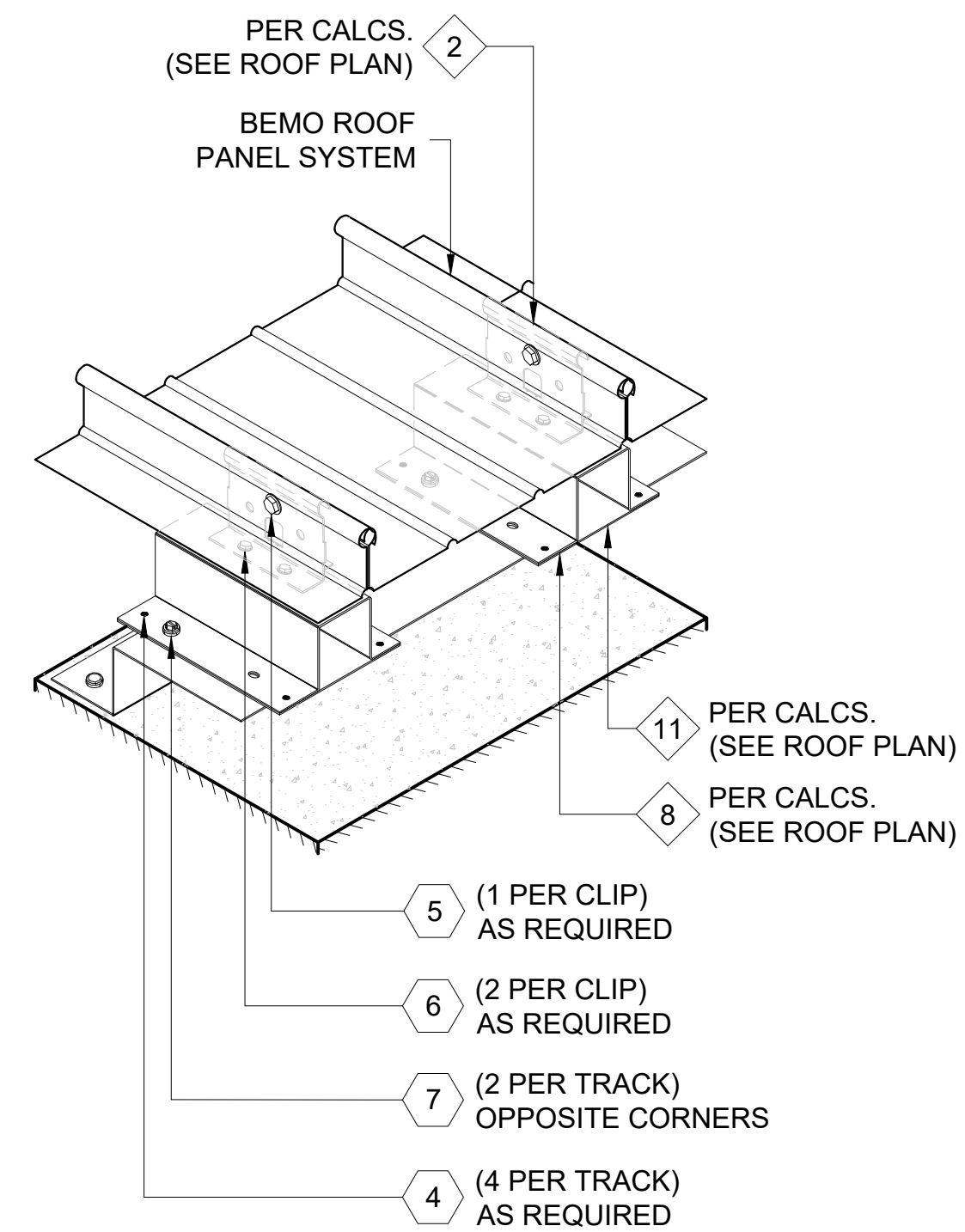
**FASTENER DESIGNATIONS**

MARK	DESCRIPTION	IMAGE
1	#14-10 x 1 1/2" DEKFAST SCREW (OR COMPARABLE)	
2	1/4"-14x 3/4" LONG HWH TEK-3 SCREW	
3	1/4"Ø BULB-TITE RIVET (W/ BONDED WASHER)	
4	3/16"Ø CLOSED END S.S. RIVET	
5	1/4"-20x 1" STAINLESS STEEL BOLT ASSEMBLY	
5a	1/4"-20x 1" HEX HEAD STAINLESS STEEL BOLT	
5b	3/4" COMB. STAINLESS STEEL AND SEALING WASHER	
5c	1/4"-20 STAINLESS STEEL LOCKING NUT	
6	1/4"-14x 1 1/2" LONG HWH TEK-3 SCREW	
7	FAS-10-4 FAB-LOK FASTENER	
8		
9		

\*(1000 HRS OF CORROSION RESISTANT COATING IN ACCORDANCE WITH ASTM B117)

**MATERIAL DESIGNATIONS**

MARK	DESCRIPTION
1	BEMO SLIDING HOOK CLIP W/ GALV. BASE
2	BEMO FIXED HOOK CLIP
3	BEMO POLYAMIDE THERMAL HALTER CLIP
4	BEMO ALUMINUM HALTER CLIP
5	BEMO HALTER CLIP THERMAL PAD
6	BEMO "40 MIL HT MEMBRANE" (3'x 65' ROLLS)
7	2 PC. GALVANIZED BASE CHANNEL (SEE DRAWINGS FOR GAUGE)
8	2 PC. GALVANIZED ZEE [HAT] SUPPORT (SEE DRAWINGS FOR GAUGE)
9	14GA. GALVANIZED "C" SHAPED SUPPORT (3 PER FLEX SECTION)
10	14GA. GALVANIZED REINFORCING CAP
11	16GA. GALVANIZED 6"x 6" BASEPLATE
12	



**ISOMETRIC VIEW**

[NOTE: ISOMETRIC VIEW IS FOR VISUALIZATION ONLY - OBJECTS NOT TO SCALE]



BEMO STANDARD DETAILS  
BEMO FLEX DETAILS

PROJECT ADDRESS  
CUSTOMER NAME  
ARCHITECT NAME

DRAWN:	D. GOSS	
CHECKED:		
PROJECT NUMBER:	####	
NO.	REVISION / ISSUE	DATE

DWG TITLE  
**FIXING HALTER DETAILS**

SCALE  
3" = 1'-0"

DWG NO.  
**D1**