

BEMO PMC Ceiling Systems

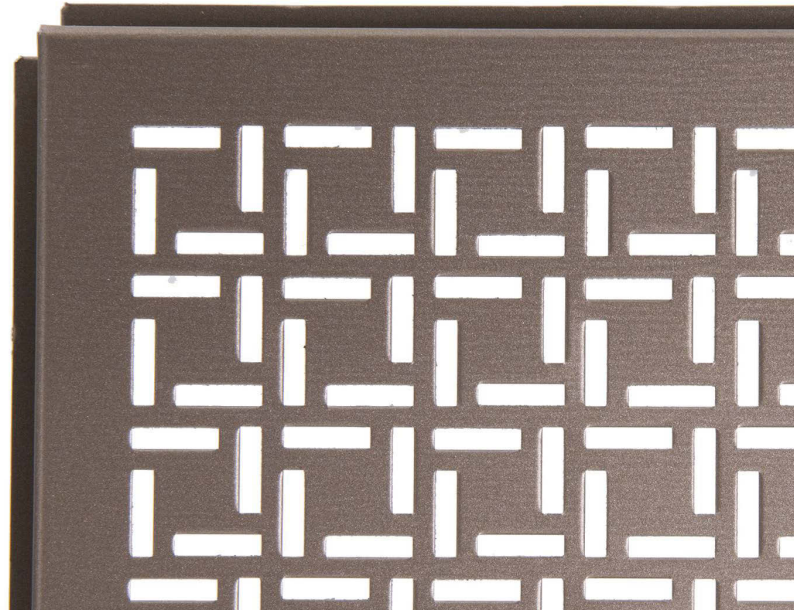
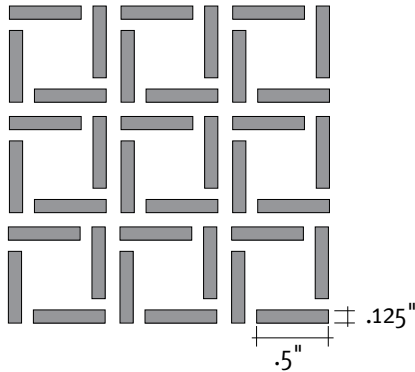
Panel and Pattern Specifications



Pattern Name:

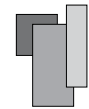
Mid-Century

Punch Size: .125" x .5"
Open Area: 32.6%

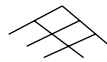


Standard Materials:

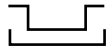
- 22 ga and 24 ga steel
- .032, .040, .050 aluminum
- Custom metals available



Panel Sizes Available: 2' x 2', 2' x 4', 1' x 6', 2' x 6', custom

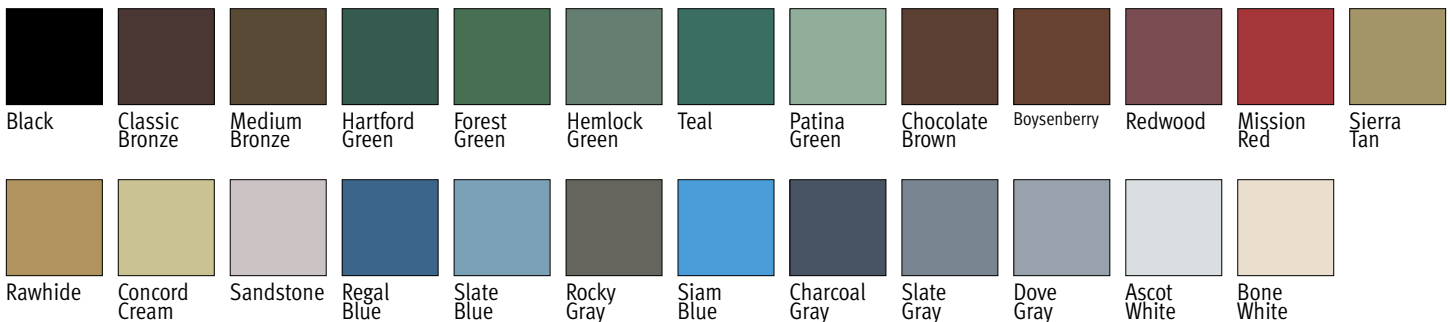


Standard Suspension Systems: 9/16", 15/16"



Panel Shape: Flat Lay-in, Tegular

Standard Colors*:



* Colors are for reference only. For accurate color selection, contact your Bemo representative for a color chip.

Finishes: Materials are pretreated, primed and, roller-coil coated with a 1.0 mil total dry film thickness (.2 mil primer with a .8 mil topcoat). The reverse side is coated with a wash coat of .4 to .5 mil dry film thickness.

More than **20 standard colors** are available, plus **6 premium colors** (special order). A variety of wood grain and mill finishes are also available. Ask your Bemo representative for details.



Bemo USA Corporation

1755 N. 48th Street, Mesa, Arizona USA 85205 | 480-545-7900

visit www.bemousa.com. For more information call or email at techservices@bemousa.com.