

BEMO PMC Ceiling Systems

Ceiling and Interiors offer unparalleled design options that elevate interior aesthetics and functionality

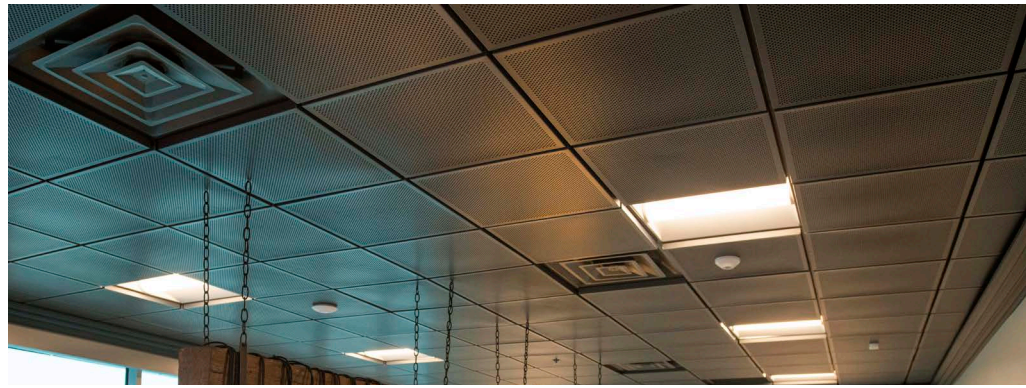


NedZink NUANCE Blue Ceiling Panels
With Matching Crown Molding



BEMO PMC CEILING SYSTEMS – FROM PANELS TO FULL CUSTOM CEILING PACKAGE

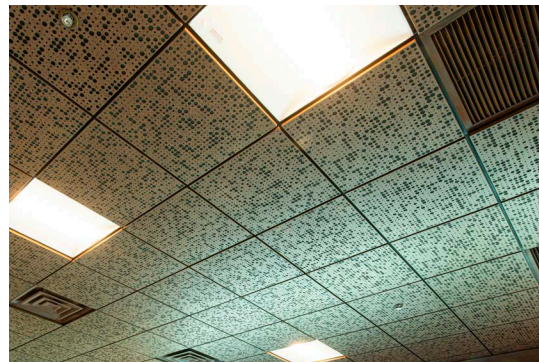
Like nothing before, BEMO Ceiling define and enhance a space. The almost unlimited variety of patterns, material, and colors give your project a custom appearance at commodity pricing. In addition, a made-to-order ceiling system using standard ceiling grid components eliminates the need for special installation instructions creating a fast, cost-effective, one-of-a-kind project.



Nearly any corporate identity, logo, mascot, or unique pattern can be incorporated into a ceiling system, interior environment, or screen wall. Unique patterns can be on a single tile or across multi-grid tiles – the applications are endless.

Fits in standard ceiling grid system:

- Ceiling grid tee width (9/16 in. or 15/16 in.)
- Tegular and flat lay-in
- Acoustic barrier lay-in fiber
Insulation type and thickness depends on desired STC and/or NRC sound rating



Ceiling Panel
Material: **Aluminum**
Pattern: **Bubble**

Materials:

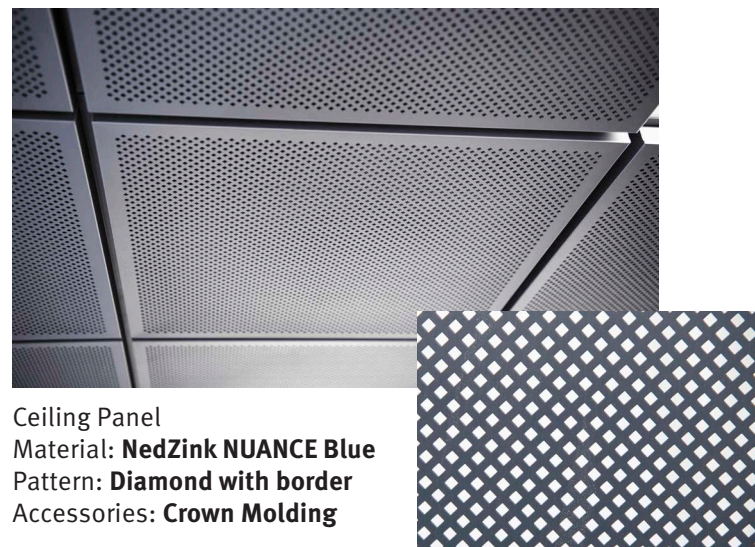
- Aluminum
- Coated Steel
- Zinc
- Stainless Steel
- Copper
- Galvanized

Applications:

- Designer Ceiling Tiles
- Custom Crown Molding
- Custom Perforated Designs
- Corporate logo, mascot, unique patterns
- Exterior and Interior Screen Walls

Perforation Patterns:

- Round (various size)
- Square (various size)
- Weave
- Custom Pattern



Ceiling Panel
Material: **NedZink NUANCE Blue**
Pattern: **Diamond with border**
Accessories: **Crown Molding**

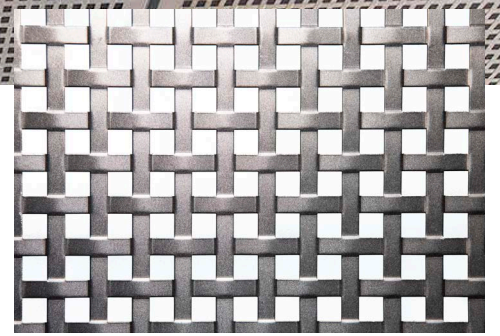


STANDARD DIMENSIONS, COLORS AND ACOUSTICAL INSULATION

Dimensions: Metal ceiling panels are available in standard sizes of 24" x 24" and 24" x 48". Larger panels, and custom sizes are available. The tegular panel pan depth is 1". Panels have a border surrounding the perforated pattern. The width of the border varies depending on the pattern, panel size, and panel style.

Acoustical Properties: BEMO PMC ceiling panels are available in almost limitless perforation patterns. To achieve the acoustic properties appropriate for the space (as determined by the architect), we specify Knauf Black Acoustical Insulation. The insulation is not included when ordering perforated panels because of different acoustic requirements.

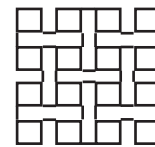
Standard Colors: Bemo and its suppliers stock a number of standard colors in both steel and aluminum. For more information concerning standard colors, please contact your Bemo sales representative at 480-545-7900.



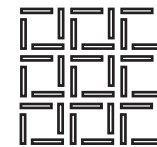
Material: **Steel**
Pattern: **Weave with border**

STANDARD PATTERNS AND CUSTOM DESIGNS

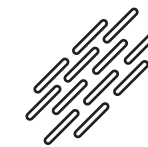
BEMO PMC Weave



BEMO PMC Mid-Century



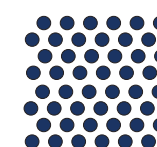
BEMO PMC Rain



BEMO PMC Diamond



BEMO PMC Round



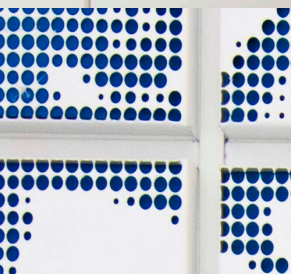
BEMO PMC Custom



BEMO PMC Round Bar



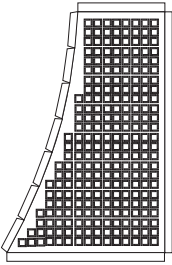
Custom Ceiling Panels
Material: **Painted steel**
Pattern: **Custom Round**



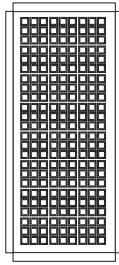
BEMO PMC CEILING ENGINEERING SERVICES – SAVE TIME ON INSTALLATION

We understand that cutting, bending and fitting metal ceiling panels in the field takes time. With precise measurements, our engineers and shop specialists can manufacture side panels, panels with a radii, and angled panels when producing the full size panels. Each panel will be numbered to match a drawing for easy installation location.

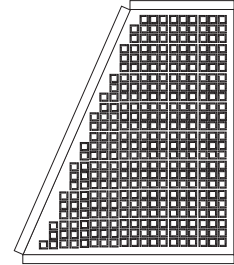
When ordering a complete install-ready package, the Bemo team will review drawings, including structural attachment heights and the suspended ceiling height. To make the installation more efficient, hangers specified for the structure and pre-cut hanger wire can be furnished.



Radii Panel

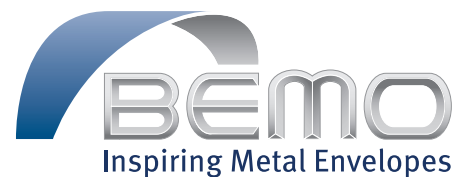
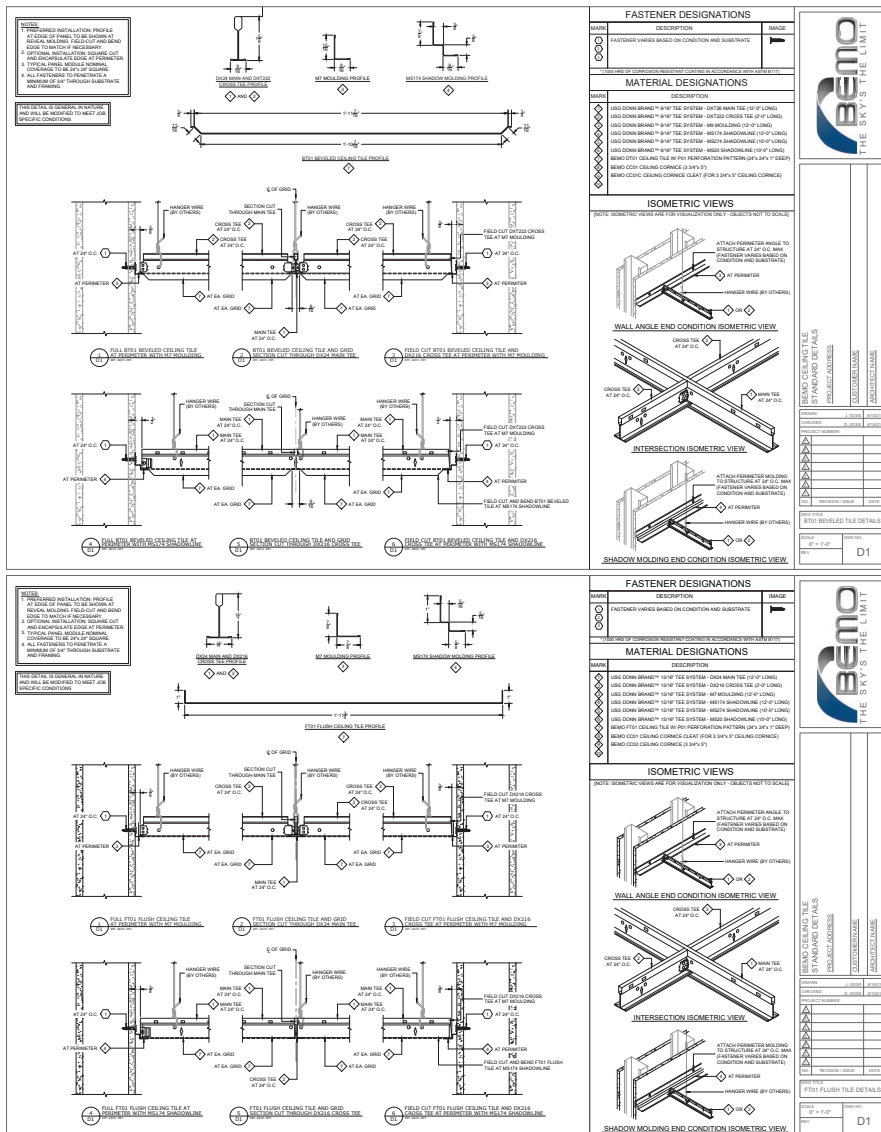


Rectangle Panel



Angle Panel

BEMO PMC CEILING SYSTEM DETAIL DRAWING – 9/16" AND 15/16" RAIL AND TEE



Bemo USA Corporation
Corporate Headquarters

1755 N. 48th Street
Mesa, AZ 85205 USA

480-545-7900

sales@bemousa.com

www.bemousa.com